

Compatible with - NEODENT

Smart HE - NEODENT



Platform	Material	Non-Engaging	Engaging	Screw	Analog
NP	Plastic	PD3UCS33BR/P	--	TPDH18	--
	Co-Cr	PD3UCS33BR/CC	--	TPDH18	--
RP Ø 4,1	Tilite	PD3UCS41/T	PD3UCH41/T	TPDH2L70	---*
	Plastic	PD3UCS41/P	PD3UCH41/P	TPDH2L70	---*
	Co-Cr	PD3UCS41/CC	PD3UCH41/CC	TPDH2L70	---*
WP	Plastic	PD3UCS51BR/P	PD3UCH51BR/P	TPDH25	--
	Co-Cr	PD3UCS51BR/CC	--	TPDH25	--



	Hex.	h.
NP	2,40	0,70
RP	2,70	0,70
WP	3,40	0,70

*Use TPDH2L6 screw for original analog

Compatible with - SYSTHEX

Classic-ci / Estetic-ci - SYSTHEX



RP Ø 4,1	Tilite	PD3UCS41/T	PD3UCH41/T	TPDH2L74	---
	Plastic	PD3UCS41/P	PD3UCH41/P	TPDH2L74	---
	Co-Cr	PD3UCS41/CC	PD3UCH41/CC	TPDH2L74	---

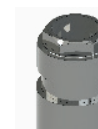


	Hex.	h.
RP	2,70	0,70

Fit-hex - SYSTHEX



Ø 3,3	Plastic	PD3UCS33BR/P	--	TPDH18	--
	Co-Cr	PD3UCS33BR/CC	--	TPDH18	--



	Hex.	h.
Ø3,3	2,55	0,70

Classic Traditional- SYSTHEX



Ø 5	Plastic	PD3UCS51BR/P	PD3UCH51BR/P	TPDH25	--
	Co-Cr	PD3UCS51BR/CC	--	TPDH25	--



	Hex.	h.
Ø5	3,40	0,70

Compatible with - SIGNO VINCES

Duo - SIGNO VINCES



Platform	Material	Non-Engaging	Engaging	Screw	Analog
NP	Plastic	PD3UCS33BR/P	PD3UCH33BR/P	TPDH18L65	---
	Co-Cr	PD3UCS33BR/CC	PD3UCH33BR/CC	TPDH18L65	---
RP	Tilite	PD3UCS41/T	PD3UCH41/T	TPDH2L74	---*
	Plastic	PD3UCS41/P	PD3UCH41/P	TPDH2L74	---*
	Co-Cr	PD3UCS41/CC	PD3UCH41/CC	TPDH2L74	---*

*Use TPDH2L6 screw for original analog



	Hex.	h.
NP	2,40	0,70
RP	2,70	0,70

Integra - SIGNO VINCES



NP	Plastic	PD3UCS33BR/P	PD3UCH33BR/P	TPDH18L65	---
	Co-Cr	PD3UCS33BR/CC	PD3UCH33BR/CC	TPDH18L65	---
RP	Tilite	PD3UCS41/T	PD3UCH41/T	TPDH2L74	---*
	Plastic	PD3UCS41/P	PD3UCH41/P	TPDH2L74	---*
	Co-Cr	PD3UCS41/CC	PD3UCH41/CC	TPDH2L74	---*

*Use TPDH2L6 screw for original analog



	Hex.	h.
NP	2,40	0,70
RP	2,70	0,70