

PRACTICAL CASES

2017
07

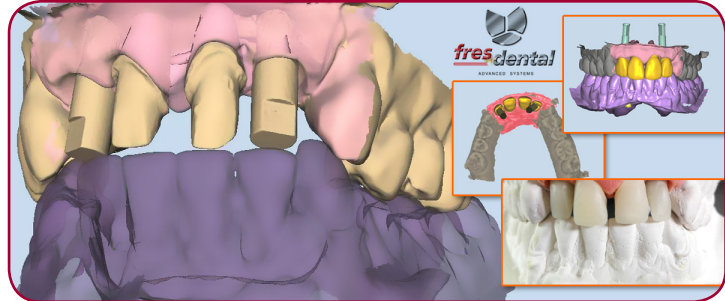
DYNAMIC ABUTMENT® SOLUTIONS

Av. Blondel, 54 3th- 25002 · Lleida · Spain · Ph: +34 973 289 580 · das@dynamicabutment.com · www.dynamicabutment.com

DOCUMENTED CASE: DISILICATE

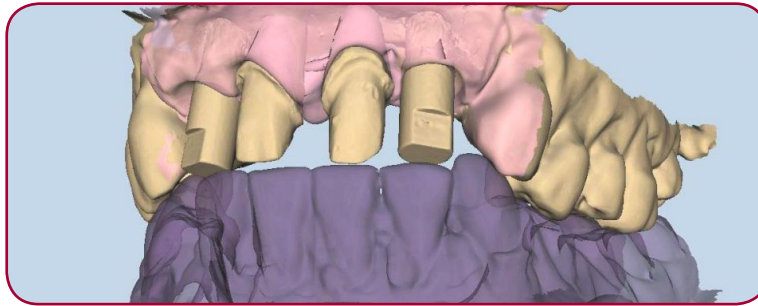
AUTHOR: FRESIDENTAL

DATE: April, 2017



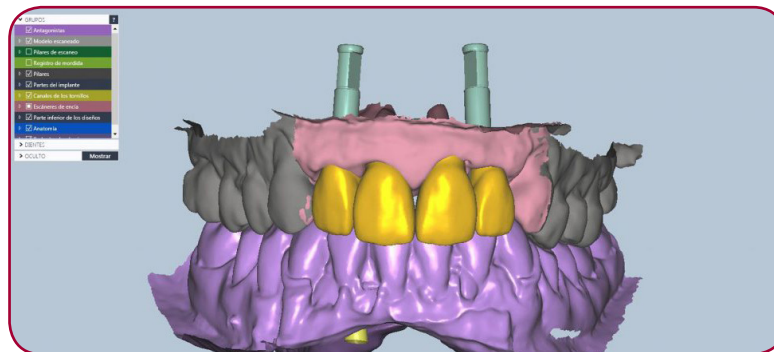
Lithium disilicate crowns on natural teeth and on dynamic titanium bases

MODEL WITH NATURAL
TEETH AND SCANBODIES
ON TIBASES



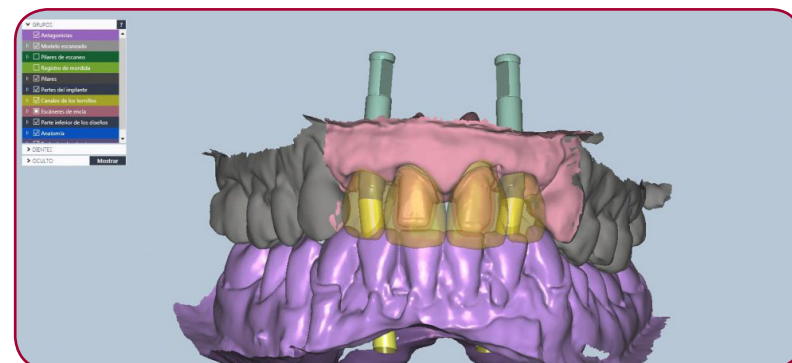
Anterior front scanning, two crowns on titanium base and two crowns on natural teeth.

REDUCTED DESIGN



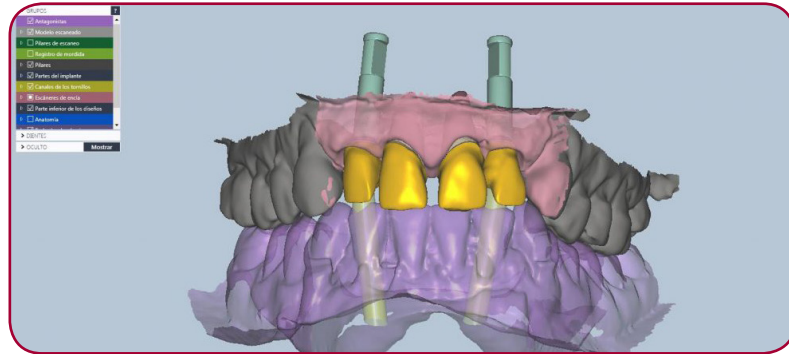
Exocad design, crowns to stratify using lithium disilicate. Design with total volume to further reduction.

ANATOMIC DESIGN WITH
TRANSPARENCY TO SEE
THE TITANIUM BASES



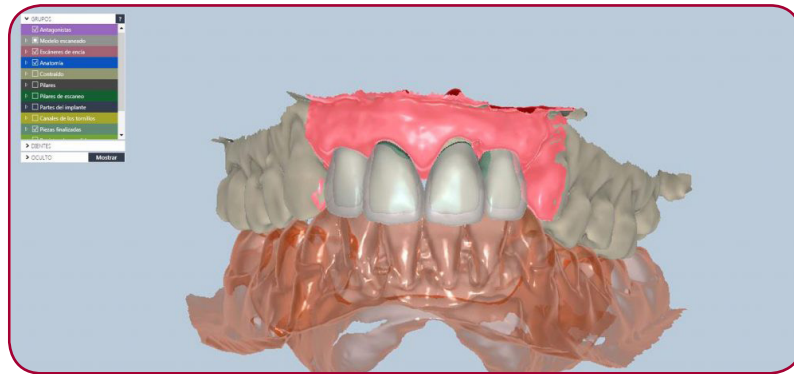
Exocad design with total volume and transparencies. The two sides ones will be restored with angulation. We will need the dynamic screw, as screw channel entry is in the incisal edge.

REDUCTED DESIGN

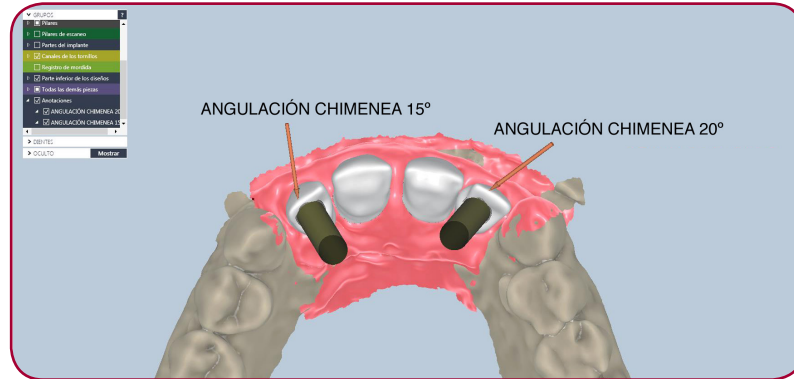


Front teeth on natural teeth and side teeth screw-retained and cemented by using Dynamic Abutment Solutions TiBases. To stratify. Designed with Exocad.

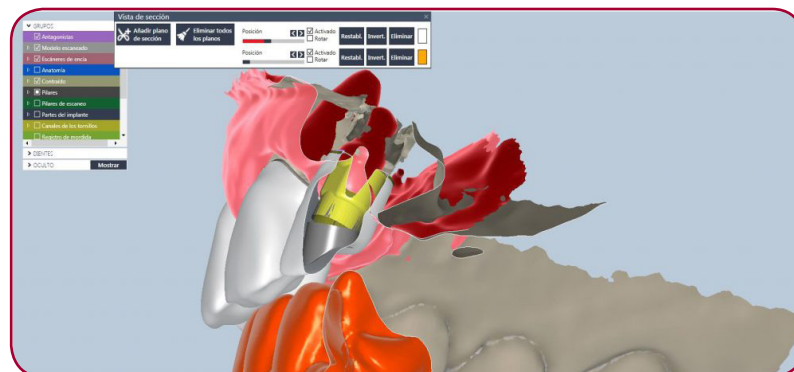
REDUCTED DESIGN



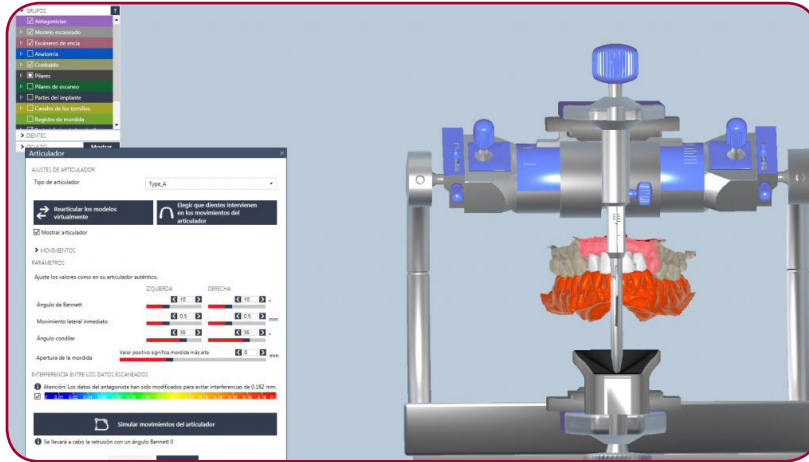
ANGULATION OF THE CHIMNEY 15° AND 20°



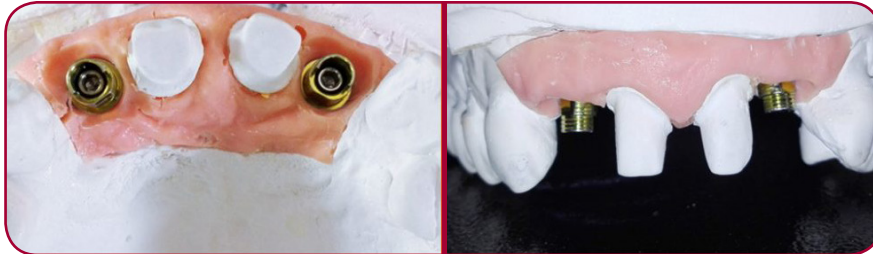
TRANSVERSAL CUT OF THE ANGULATED TiBases



DESIGN WITH
VIRTUAL
ARTICULATOR



MODEL WITH
TIBases AND
PREPARED TEETH
STUMP



MODEL WITH
LITHIUM DISILICATE
CROWNS TO
STRATIFY



FRESDENTAL, innovación y manufacturas, S.L.
 Mayor street, 41, 43, 45, 47
 ZIP CODE: 03749 - Jesús Pobre
 (Alicante) SPAIN
 Tel: (+34) 965 756 616
 info@fresdental.com

