

DYNAMIC ABUTMENT® SOLUTIONS

# MULTI-UNIT DASSYSTEM

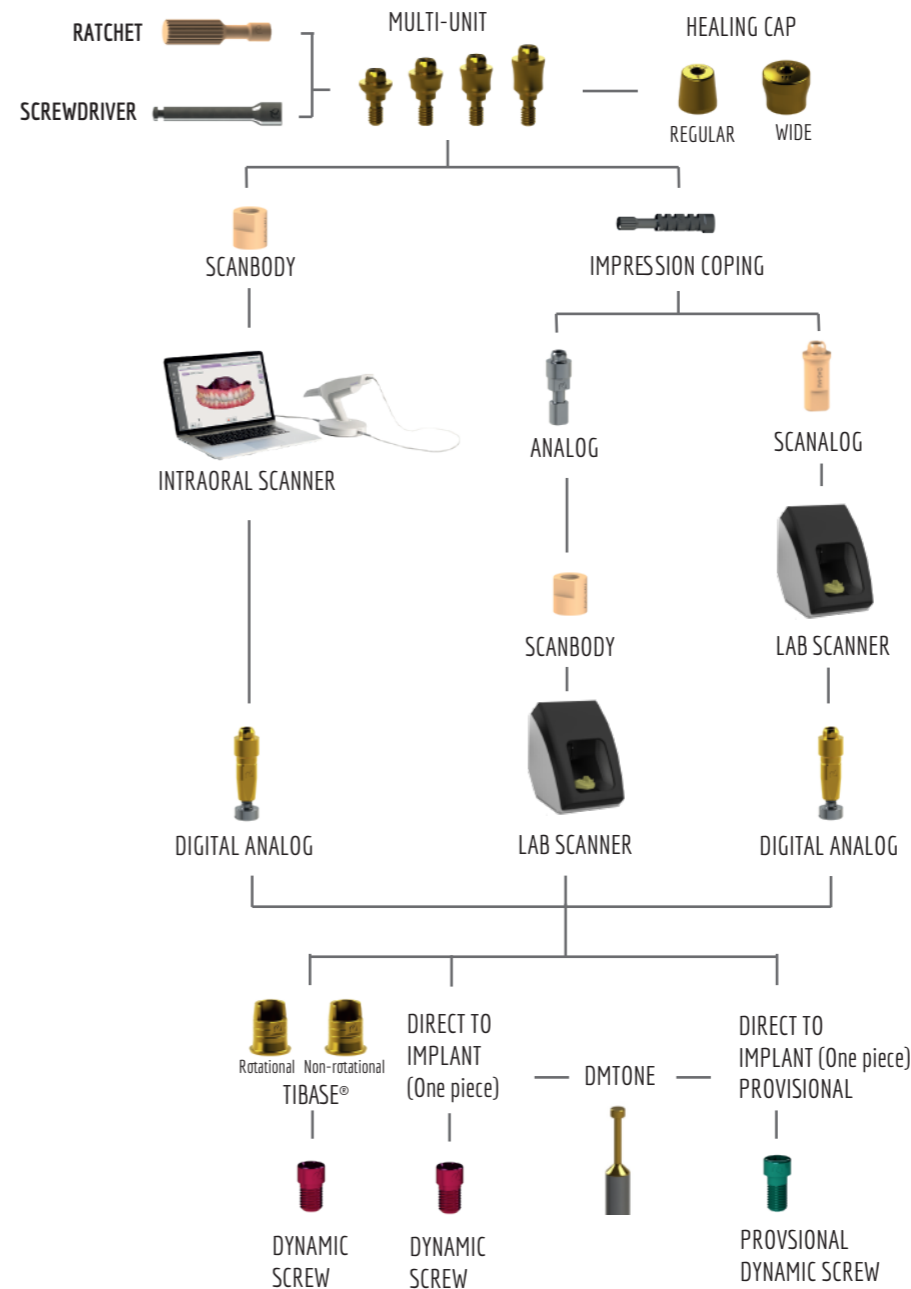
Work different, work better



DYNAMIC ABUTMENT® SOLUTIONS

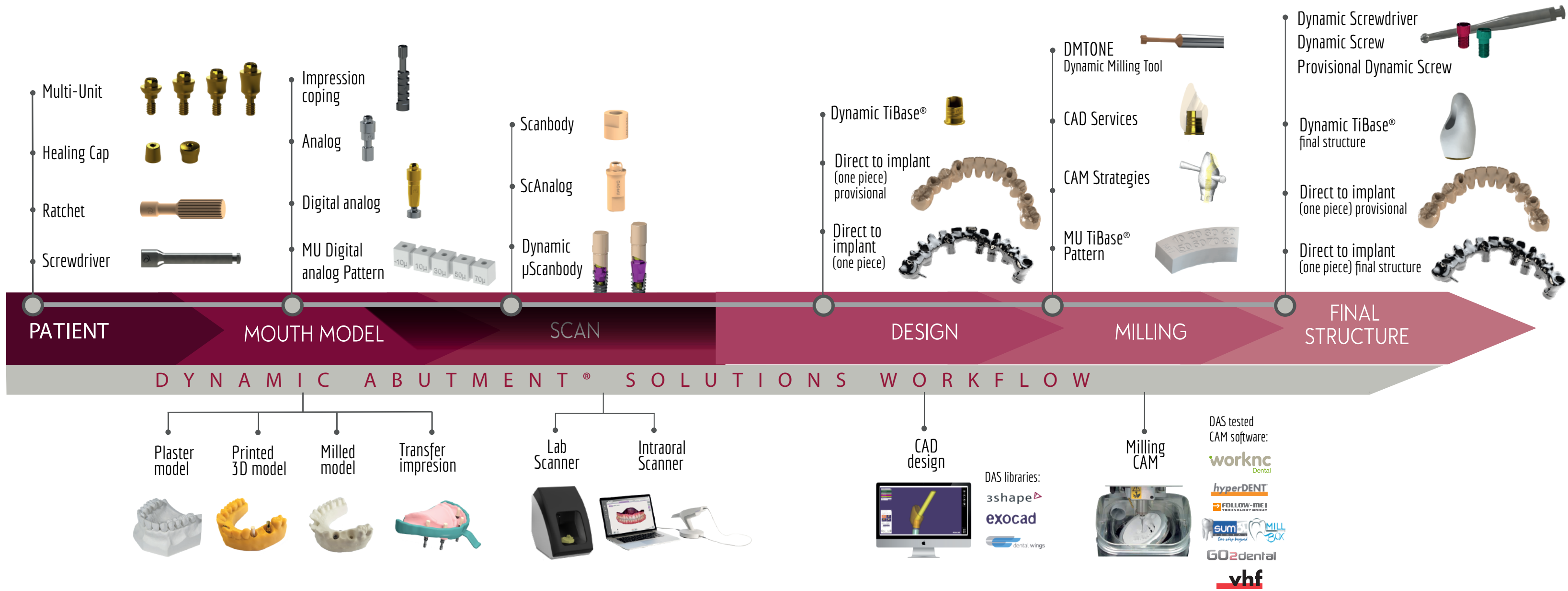
# MULTI-UNIT DASSYSTEM

Work different, work better



Digital workflow from the beginning to the end of the work. With both intraoral and lab scanners. Also available with full analogue workflow.

DIGITAL WORKFLOW - MULTI-UNIT DAS SYSTEM



# MULTI-UNIT

The Multi-unit abutment has been carefully designed to rehabilitate partially or fully edentulous arches, as well as individual.

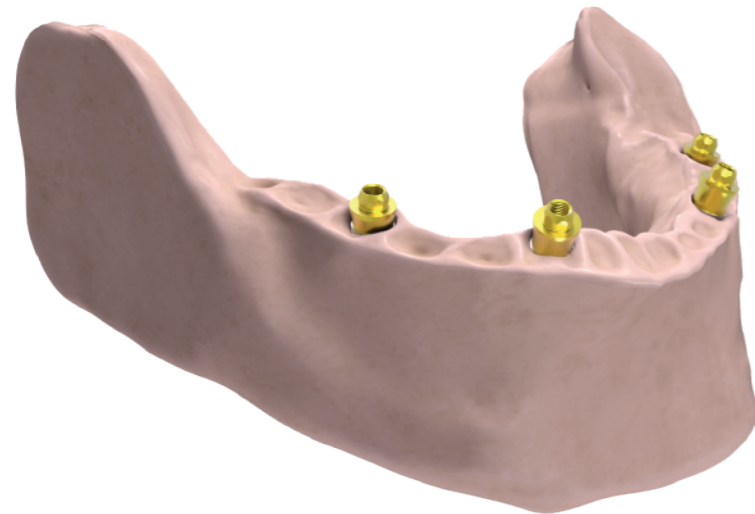
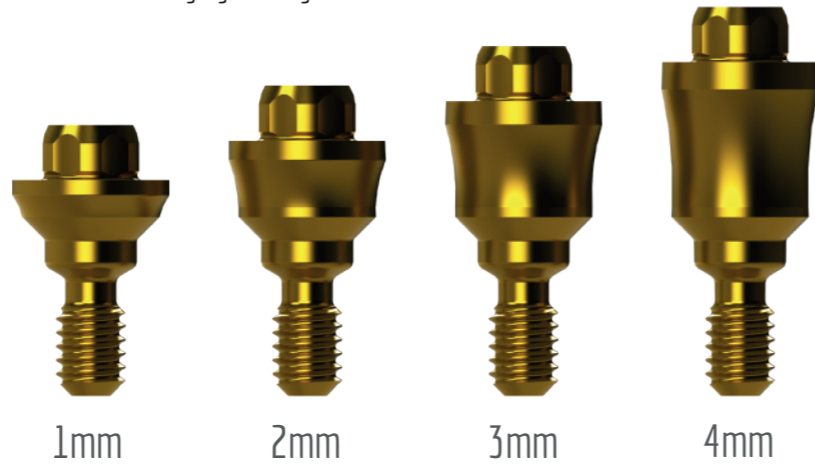
Maximum diameter of the MU is 4mm, being narrower it avoids contact with the bone



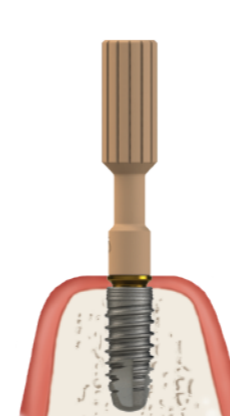
Lower cone height which allows greater disparallelism than the classic multi-unit.  
Divergence between implants: 50°

Concave design facilitates healing and soft tissue adaptation.

Available in 4 gingival heights.

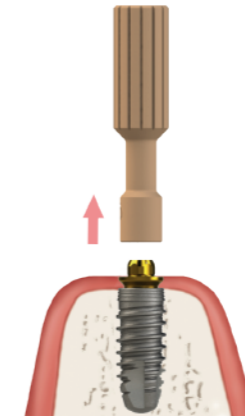


## MU Insertion Procedure



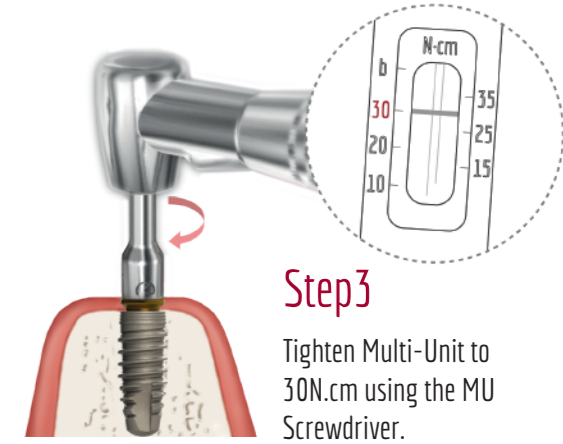
### Step1

Use the plastic gripping tool to attach the Multi-Unit to the implant.



### Step2

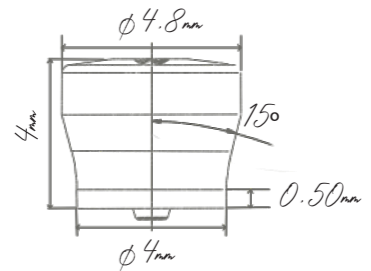
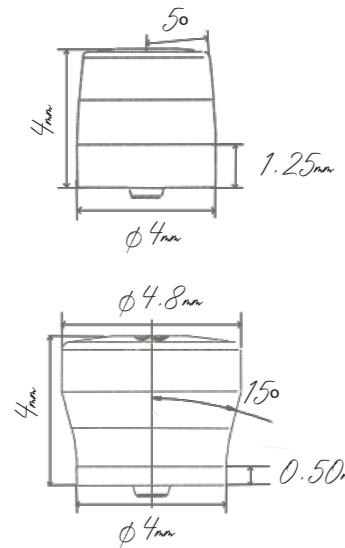
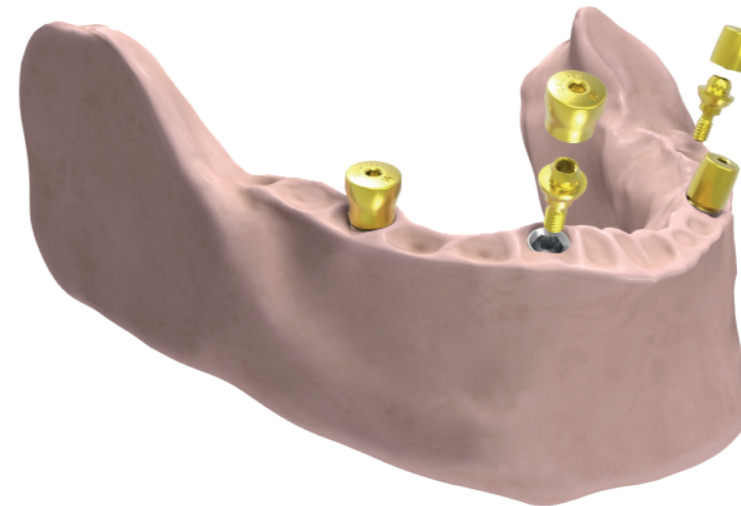
Remove the plastic tool.



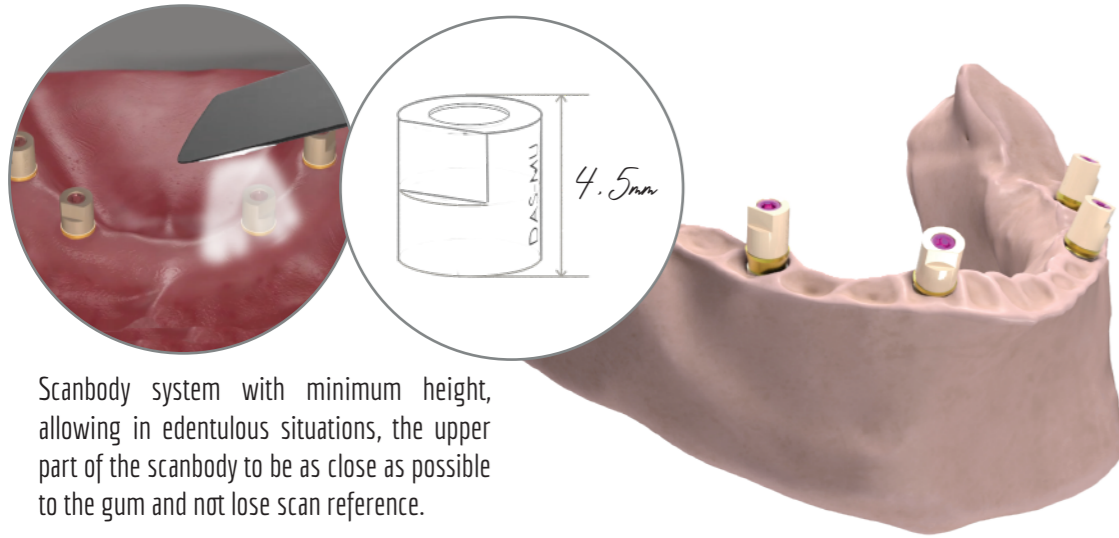
### Step3

Tighten Multi-Unit to 30N.cm using the Multi-Unit Screwdriver.

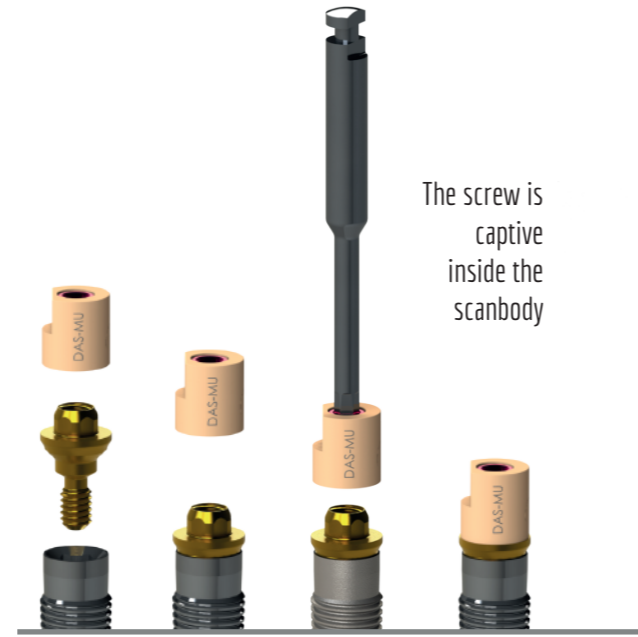
## MU Healing Caps



# MULTI-UNIT SCANBODY



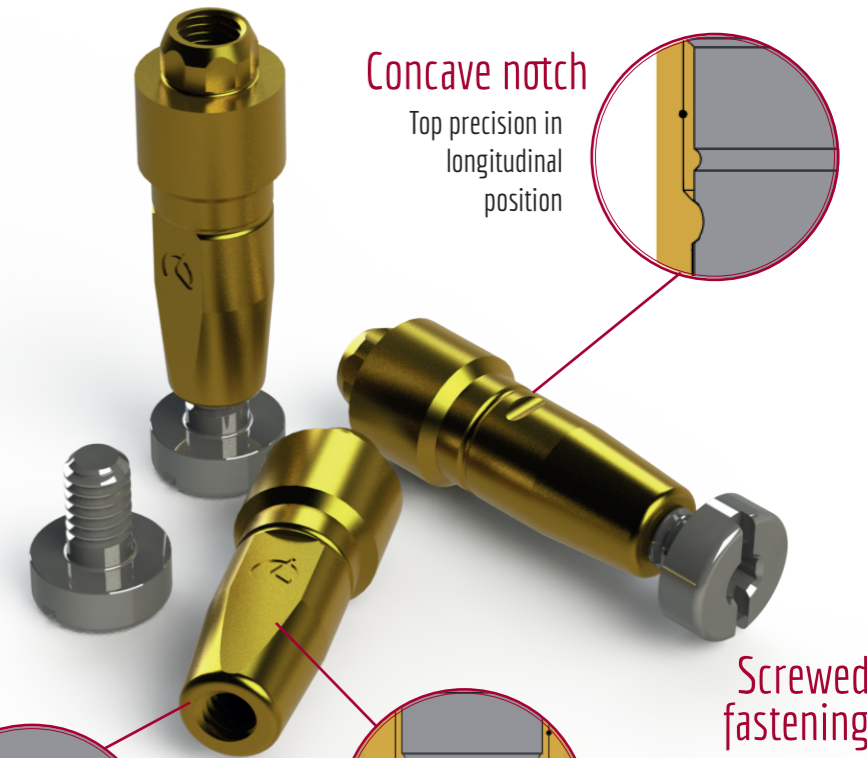
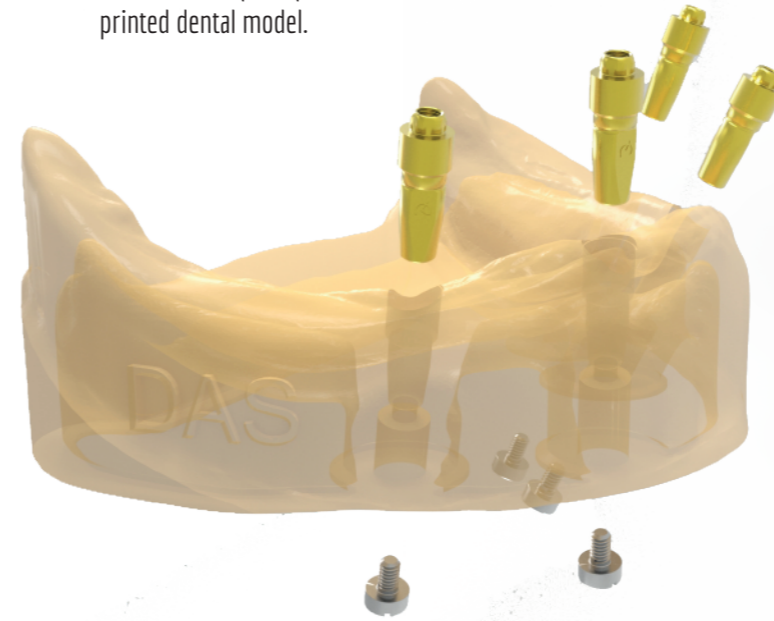
Scanbody system with minimum height, allowing in edentulous situations, the upper part of the scanbody to be as close as possible to the gum and not lose scan reference.



The screw is captive inside the scanbody

# DIGITAL ANALOG

Digital analog of the dental implant to simulate implant position in a 3D printed dental model.

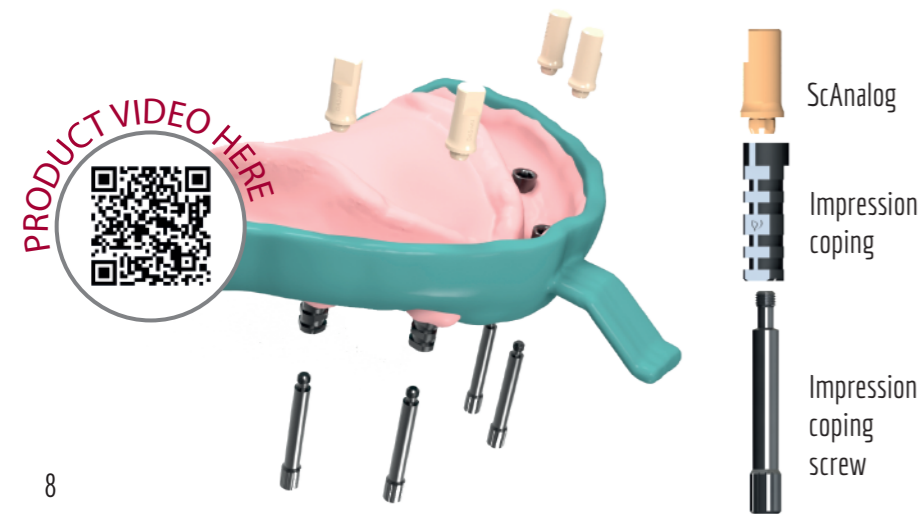


**Concave notch**  
Top precision in longitudinal position

**Screwed fastening**

Prevents the analog from moving in Z

# MULTI-UNIT SCANALOG



ScAnalog

Impression coping

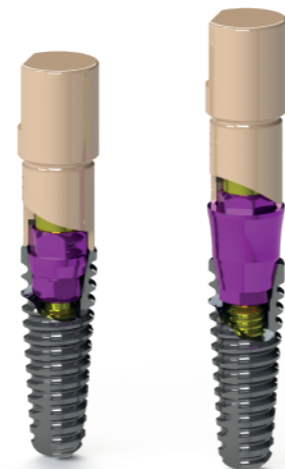
Impression coping screw

# DYNAMIC μSCANBODY

All components of the Multi-Unit DAS System can also be used with the Dynamic μScanbody.

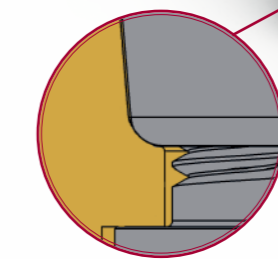
For non-engaging prosthetic options only.

You can scan with the Dynamic μScanbody and then use the special Dynamic μScanbody library with the MU components.

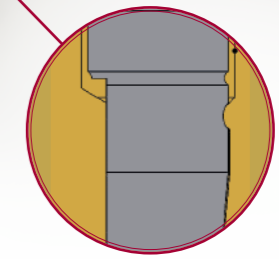


# ANALOG

Also available traditional analog for plaster model.



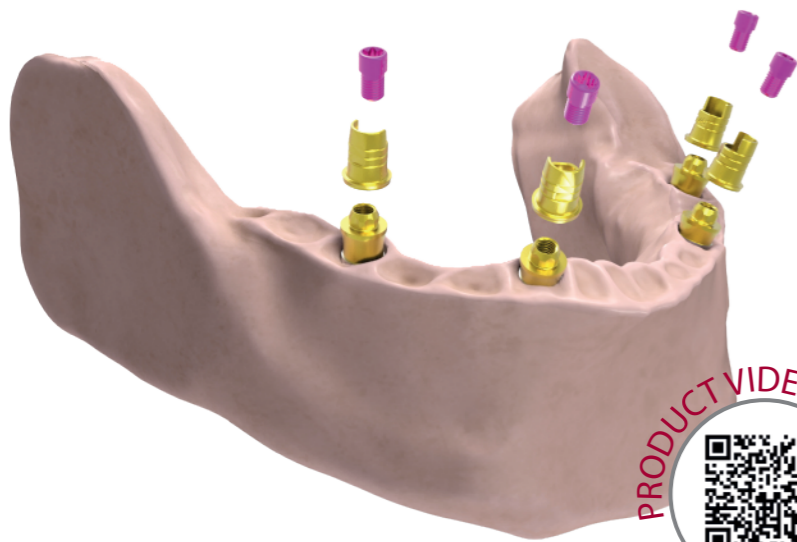
**Curved Surface**  
Longitudinal cut to avoid rotation X-Y



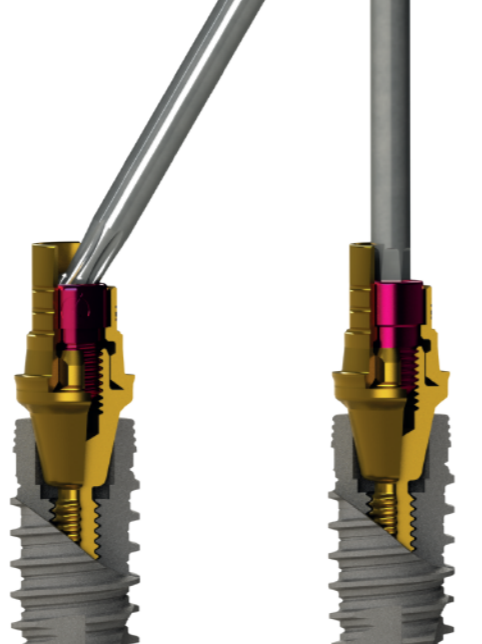
**Longitudinal cut**  
Longitudinal cut to avoid rotation X-Y

# DYNAMIC TIBASE®

To correct **ANGULATION** up to **45°**



PRODUCT VIDEO HERE



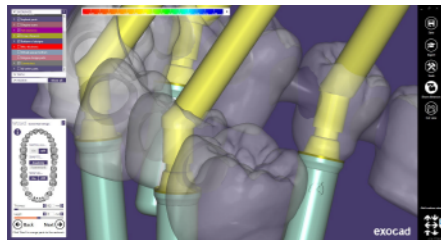
Angulated screw channel

Straight screw channel

NON-ENGAGING / ENGAGING

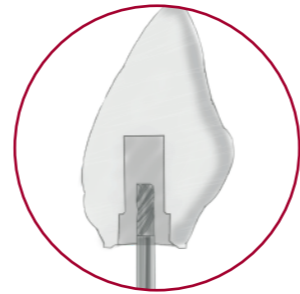


## CAD DESIGN



DAS Multi-unit system **allows to change** the **MU** in the **library** without rescanning or redesigning the case. That facilitates the lab and clinic work, as technician can change the MU without the need to make a new appointment with the patient to re-scan.

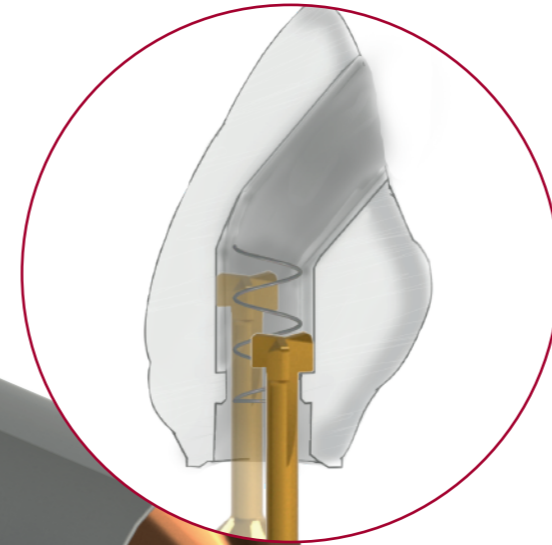
# DIRECT TO IMPLANT (One piece)



Step 1  
Crown with pre drill



Step 2  
Crown with angled channel



Step 3  
**DMTONE**

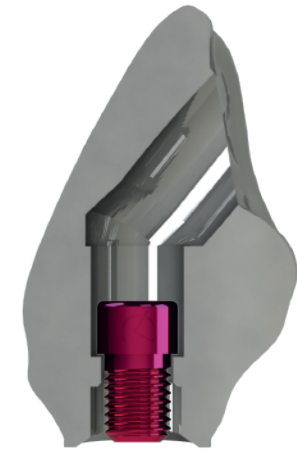
Crown with Dynamic Milling Tool. Milling the screw seat and increasing the diameter of the straight channel.



Dynamic screw

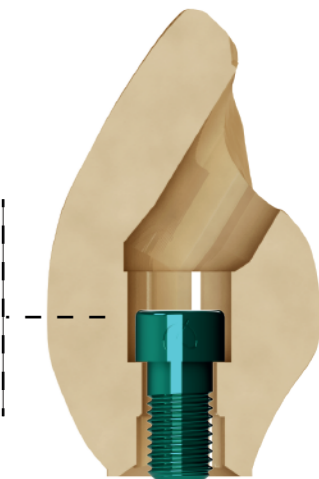


Provisional Dynamic screw



Final restorations 0-45°

Direct to implant libraries available R/NR



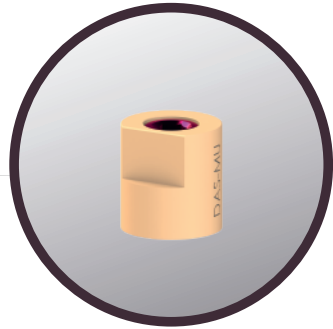
Greater seating thickness  
Greater contact surface between the screw and the material for greater safety in soft materials.

Provisional restorations up to 35°

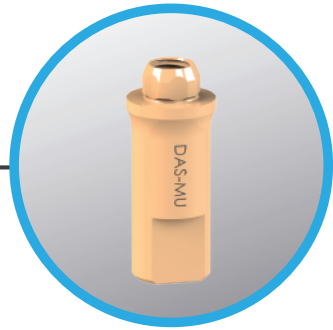
Provisional Direct to implant libraries available R/NR

# DAS MU LIBRARIES

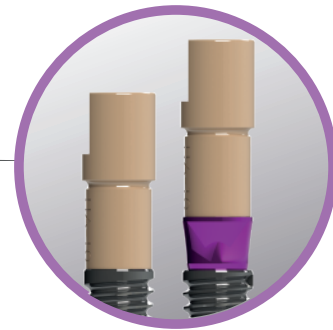
## DAS MU PREMIUM library



**MU Scanbody**  
DAS\_MU\_XXXX\*\_PREMIUM



**MU ScAnalog**  
DAS\_MU\_SA\_XXXX\*\_PREMIUM



**Dynamic μScanbody**  
DAS\_MU\_I/IG\_XXXX\*\_PREMIUM

\*XXXX= compatibility code

# MU DAS SYSTEM COMPONENTS



**Ratchet**  
49.409.000.01-2



**Screwdriver**  
43.321.316.01-2



**Healing Cap Regular**  
40.320.003.98-2



**Healing Cap Wide**  
40.320.003.99-2



**Impression coping**  
29.301.000.10-2



**Analog**  
22.612.209.01-2



**Digital Analog**  
34.312.209.01-2



**MU Scanbody**  
53.412.209.01-2



**MU ScAnalog**  
23.412.209.01-2



**Engaging MU Dynamic TiBase®**  
31.312.209.01-2



**Non-Engaging MU Dynamic TiBase®**  
31.322.209.01-2



**Dynamic Screw**  
41.320.040.01-2



**Provisional Dynamic Screw**  
41.320.050.02-2



**Straight Screw**  
40.320.003.06-2



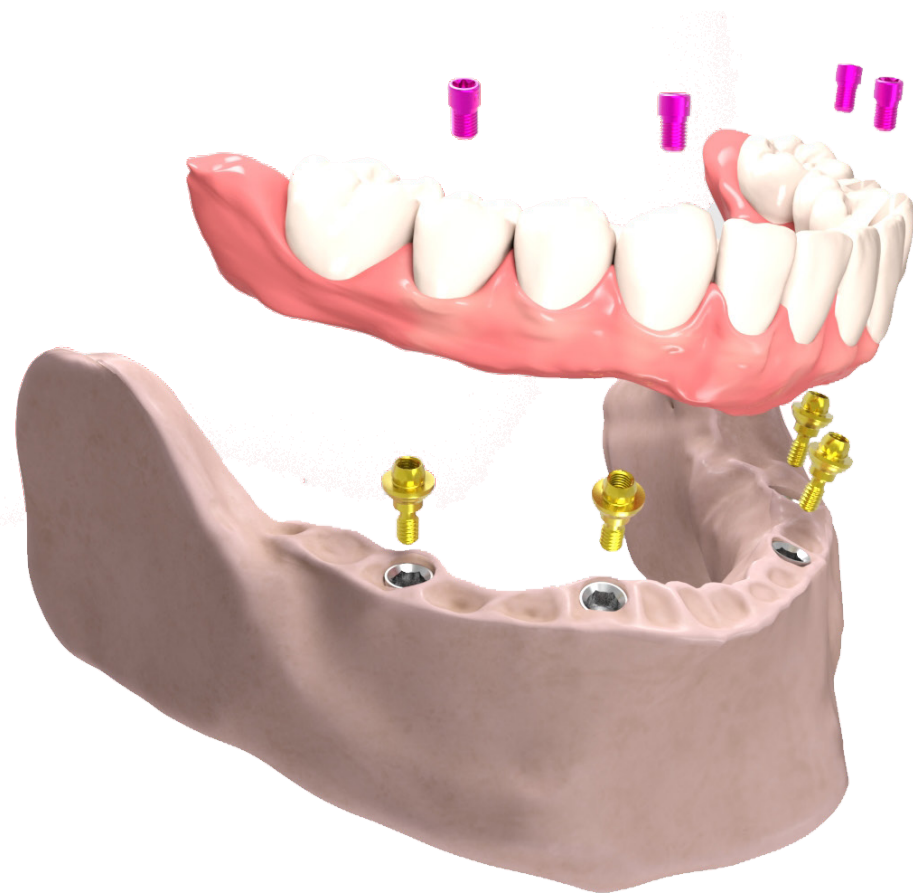
**Dynamic Screwdriver**  
43.618.201.01-2 (18mm)  
43.624.201.01-2 (24mm)  
43.632.201.01-2 (32mm)



**Screwdriver Hex.1,2**  
43.618.103.01-2



**MU DMTone**  
33.390.716.01-2 Shank Ø3  
33.490.716.01-2 Shank Ø4  
33.690.716.01-2 Shank Ø6



## LIST OF COMPATIBILITIES AVAILABLE

AB	DIO IMPLANTS	NOBEL BIOCARE
ACE	EASY IMPLANT	NORIS MEDICAL
ADIN	EUROTEKNIKA	OSTEOPLUS
ALPHABIO	HAHN IMPLANT (GLIDEWELL)	OSSTEM IMPLANT
ANCLADEN	HI-TEC	PROCLINIC
ARDS	HIOSSEN	SEWON MEDIX
ASTRA	IBS	SGS
AVINENT	IDO IMPLANTS	SIGNO VINCES
BEGO	IHDE DENTAL (IMBIODENT)	SOUTHERN IMPLANTS
BIOCONCEPT	IMPLANT DIRECT	STRAUMANN
BIOGENESIS	IMPLANT GENESIS	TITANIUM - FIX
BIOHORIZONS	INTRA-LOCK	TRE-OSS
BIONER	JDENTALCARE	TRI DENTAL IMPLANTS
BIOTEC	LEADER	UFIT
BTK	MEGAGEN	VULKAN IMPLANTS
B&W	MIS	YES IMPLANT
CONEXÃO SISTEMA DE PRÓTESE	MOZO-GRAU	ZIMMER
CORTEX	MPI	
DENTIUM	NEOBIOTECH	



## AB

- ✦ I2  
Implant: Ø 3,5/3,75/4,2/4,5/ 5/6  
Platform: Standard (Code 0040) p. 24
- ✦ I22  
Implant: Ø 3,75/4,22  
Platform: Standard (Code 0040) p. 24
- ✦ I5  
Implant: Ø 3,5/3,75/4,2/4,5/5/6/7/8  
Platform: Standard (Code 0040) p. 24
- ✦ I55  
Implant: Ø 3,75/4,2/4,5/5/6/7/8  
Platform: Standard (Code 0040) p. 24
- ✦ I10  
Implant: Ø 4,2/5  
Platform: Standard (Code 0040) p. 24
- ✦ I15  
Implant: Ø 6/7/8  
Platform: Standard (Code 0040) p. 24

## ACE

- ✦ Infinity Internal Hex  
Implant: Ø 3,7/4,1  
Platform: 3,5 (Code 0040) p. 24

## ADIN

- ✦ Swell  
Implant: Ø 3,3  
Platform: 3,45 (Code 0040) p. 24
- Implant: Ø 3,75/4,2  
Platform: 3,6 (Code 0040) p. 24
- Implant: Ø 5  
Platform: 4 (Code 0040) p. 24
- Implant: Ø 6  
Platform: 4,6 (Code 0040) p. 24

## ✦ Touareg-S / Touareg-OS

- Implant: Ø 3,5  
Platform: 3,45 (Code 0040) p. 24
- Implant: Ø 3,75/4,2  
Platform: 3,6 (Code 0040) p. 24
- Implant: Ø 5  
Platform: 4 (Code 0040) p. 24
- Implant: Ø 6  
Platform: 5 (Code 0040) p. 24
- ✦ Touareg CloseFit  
Implant: Ø 3,5  
Platform: RP (Code 0021) p. 22

## ALPHABIO

- ✦ Internal Hex Connection (IH) SPI  
Implant: Ø 3,3/3,75/4,2/5/6  
Platform: Universal (Code 0040) p. 24
- ✦ Internal Hex Connection (IH) ICE  
Implant: Ø 3,7/3,75/4,2/4,65/5,3  
Platform: Universal (Code 0040) p. 24
- ✦ Internal Hex Connection (IH) DFI  
Implant: Ø 3,3/3,75/4,2/4,5  
Platform: Universal (Code 0040) p. 24
- ✦ Internal Hex Connection (IH) ATID  
Implant: Ø 3,3/3,75/4,2/5/6  
Platform: Universal (Code 0040) p. 24
- ✦ Internal Hex Connection (IH) NEO  
Implant: Ø 3,75/4,2/5  
Platform: 3,5 (Code 0040) p. 24
- ✦ Conical Standard Connection (CS)  
Implant: Ø 3,75/4,2/5  
Platform: Standard (Code 0169) p. 24

## ANCLADEN

- ✦ Anclalock  
Implant: Ø 3,75/4,25/5  
Platform: 3,5 (Code 0040) p. 24

## ARDS

- ✦ Smart  
Implant: Ø 3,75/4,2/4,5  
Platform: 3,75 (Code 0040) p. 24
- ✦ Classic  
Implant: Ø 3,75/4,2/4,5  
Platform: 3,75 (Code 0040) p. 24
- Implant: Ø 3,3/3,75/4,2/5/6  
Platform: 3,75 (Code 0040) p. 24
- ✦ Premium  
Implant: Ø 3,3/3,75/4,2/5/6  
Platform: 3,75 (Code 0040) p. 24
- ✦ CIT  
Implant: Ø 3,3/3,75/4,2/5/6  
Platform: 3,75 (Code 0040) p. 24

## ASTRA

- ✦ Aqua  
Implant: Ø 3,5/4  
Platform: Aqua (Code 0004) p. 22

## AVINENT

- ✦ HI/IC  
Implant: Ø 3,1/3,5/4  
Platform: 3,5 (Code 0040) p. 24

## BIOCONCEPT

- ✦ BC Bone Level  
Implant: Ø 3,3  
Platform: Narrow (Code 0033) p. 23
- Implant: Ø 4,1/4,8  
Platform: Regular (Code 0035) p. 24
- ✦ BV Tapered Bone Level  
Implant: Ø 4/4,5/5  
Platform: Regular (Code 0030) p. 23

## BIOHORIZONS

- ✦ Tapered Internal  
Implant: Ø 3,8  
Platform: 3,5 (Yellow) (Code 0040) p. 24
- ✦ Internal  
Implant: Ø 3,5/4  
Platform: 3,5 (Yellow) (Code 0040) p. 24

## BIONER

- ✦ Hikelt  
Implant: Ø 3,8  
Platform: 3,95 (Code 0040) p. 24
- ✦ TopDM  
Implant: Ø 3,5  
Platform: 3,5 (Code 0021) p. 22
- Implant: Ø 4  
Platform: 4 (Code 0021) p. 22
- Implant: Ø 5  
Platform: 5 (Code 0021) p. 22

## BIOTEC

- ✦ SPR/CIM  
Implant: Ø 3,3  
Platform: 3,3 (Code 0040) p. 24
- Implant: Ø 3,75  
Platform: 3,75 (Code 0040) p. 24
- ✦ SPR/SPTT/CIM  
Implant: Ø 4,2  
Platform: 4,2 (Code 0040) p. 24
- Implant: Ø 5  
Platform: 5 (Code 0040) p. 24

## BTK

- ✦ Klassic / Konic  
Implant: Ø 3,25/4  
Platform: 3,5 IR (Code 0040) p. 24

## B&W

- ✦ Internal Hexagon CIH  
Implant: Ø 3,3/4  
Platform: 4 (Code 0040) p. 24

## CONEXÃO SISTEMA DE PRÓTESE

- ✦ Flash  
Implant: Ø 3,5/4,3/5  
Platform: Universal (Code 0021) p. 22
- ✦ Torq  
Implant: Ø 3,5/3,75/4  
Platform: Universal (Code 0021) p. 22
- ✦ Expand  
Implant: Ø 3,75/4/5  
Platform: Universal (Code 0021) p. 22

## CORTEX

- ✦ Dynamix  
Implant: Ø 3,3/3,8/4,2/5/6  
Platform: 3,75 (Code 0040) p. 24
- ✦ Classix  
Implant: Ø 3,3/3,8/4,2/5/6  
Platform: 3,75 (Code 0040) p. 24
- ✦ Saturn  
Implant: Ø 3,8/4,2  
Platform: 3,5 (Code 0040) p. 24
- ✦ Conical Platform:  
Implant: Ø 3,3/3,8/4,2  
Platform: RP (Code 0004) p. 22
- ✦ Magix  
Implant: Ø 3,3/3,8/4,2  
Platform: RP (Code 0004) p. 22

## DENTIS

- ✦ s-Clean  
Implant: Ø 3,7  
Platform: Mini (Code 0030) p. 23
- Implant: Ø 4,1/4,3  
Platform: Regular (Code 0030) p. 23
- Implant: Ø 4,8  
Platform: Wide (Code 0030) p. 23

## DENTIUM

### ★ SuperLine and Implantium

Implant: Ø 3,4  
Platform: 3,6 (Code 0030) p. 23

Implant: Ø 3,8  
Platform: 4 (Code 0030) p. 23

Implant: Ø 4,3  
Platform: 4,5 (Code 0030) p. 23

Implant: Ø 4,8  
Platform: 5 (Code 0030) p. 23

Implant: Ø 4,8  
Platform: 6 (Code 0030) p. 23

## DIO IMPLANTS

### ★ UF II

Implant: Ø 3,8/4/4,5/5/5,5  
Platform: Regular (Code 0030) p. 23

## EASY IMPLANT

### ★ Master C

Implant: Ø 3,5  
Platform: 3,5 (Ocean) (Code 0004) p. 22

Implant: Ø 4  
Platform: 4 (Ocean) (Code 0004) p. 22

Implant: Ø 4,5  
Platform: 4,5 (Lilas) (Code 0030) p. 23

Implant: Ø 5  
Platform: 5 (Lilas) (Code 0030) p. 23

### ★ Master S

Implant: Ø 3,3  
Platform: 3,3 (Ocean) (Code 0004) p. 22

Implant: Ø 3,75  
Platform: 3,75 (Lilas) (Code 0030) p. 23

Implant: Ø 4,25  
Platform: 4,25 (Lilas) (Code 0030) p. 23

Implant: Ø 4,75  
Platform: 4,75 (Lilas) (Code 0030) p. 23

### ★ Master L

Implant: Ø 3,3  
Platform: 3,3 (Lilas) (Code 0030) p. 23

Implant: Ø 3,75  
Platform: 3,75 (Lilas) (Code 0030) p. 23

Implant: Ø 4,25  
Platform: 4,25 (Lilas) (Code 0030) p. 23

Implant: Ø 4,75  
Platform: 4,75 (Lilas) (Code 0030) p. 23

## EUROTEKNIKA

### ★ Naturactis

Implant: Ø 3,5  
Platform: 3,4 (Code 0004) p. 22

Implant: Ø 4  
Platform: 3,8 (Code 0004) p. 22

Implant: Ø 4,5  
Platform: 4,3 (Code 0004) p. 22

Implant: Ø 5  
Platform: 4,8 (Code 0004) p. 22

### ★ Natea

Implant: Ø 3,6/4,1/4,8  
Platform: Narrow (Code 0004) p. 22

Implant: Ø 3,6/4,1/4,8  
Platform: Regular (Code 0004) p. 22

Implant: Ø 6  
Platform: Wide (Code 0004) p. 22

### ★ Natural

Implant: Ø 3,5  
Platform: Narrow (Code 0004) p. 22

Implant: Ø 4/4,5  
Platform: Regular (Code 0004) p. 22

Implant: Ø 5  
Platform: Wide (Code 0004) p. 22

## GALIMPLANT

### ★ Internal Connection

Implant: Ø 3,5  
Platform: 3,5 (Code 0004) p. 22

Implant: Ø 4  
Platform: 4 (Code 0004) p. 22

Implant: Ø 5  
Platform: 5 (Code 0004) p. 22

## HAHN IMPLANT (GLIDEWELL)

### ★ Hahn Tapered Implant

Implant: Ø 3,5/4,3  
Platform: 3,5/4,3 (Code 0021) p. 22

Implant: Ø 5  
Platform: 5 (Code 0022) p. 23

## HI-TEC

### ★ Tapered Self Thread

Implant: Ø 3,3/3,75  
Platform: 3,5 (Code 0040) p. 24

### ★ Logic Plus

Implant: Ø 3,5  
Platform: 3,7 (Code 0040) p. 24

Implant: Ø 4,3  
Platform: 3,9 (Code 0040) p. 24

## HIOSSEN

### ★ ETTI SA/ETIII SA

Implant: Ø 4/4,5/5  
Platform: Regular (Code 0030) p. 23

### ★ ETTI BA

Implant: Ø 4/4,5/5  
Platform: Regular (Code 0030) p. 23

## IBS

### ★ Magic FC

Implant: Ø 4/4,5/5/5,5/6/6,5  
Platform: 3,8 (Code 0030) p. 23

### ★ N.R Fix

Implant: Ø 3/3,5  
Platform: 3,8 (Code 0030) p. 23

## IDO IMPLANTS

### ★ IDo Implant

Implant: Ø 3,8/4/4,5/5/5,5/6/7  
Platform: Universal (Code 0030) p. 23

## IHDE DENTAL (IMBIODENT)

### ★ Bone Level Plus

Implant: Ø 3,3  
Platform: 3,3 (Code 0033) p. 23

Implant: Ø 4,1  
Platform: 4,1 (Code 0035) p. 24

Implant: Ø 4,8  
Platform: 4,8 (Code 0035) p. 24

## IMPLANT DIRECT

### ★ Legacy

Implant: Ø 3,7/4,2  
Platform: 3,5 (Code 0040) p. 24

### ★ SwishActive

Implant: Ø 3,3  
Platform: 3 (Code 0021) p. 22

Implant: Ø 4,1/4,8  
Platform: 3,4 (Code 0022) p. 23

### ★ Interactive

Implant: Ø 3,2/3,7  
Platform: 3 (Code 0021) p. 22

Implant: Ø 4,3/5  
Platform: 3,4 (Code 0022) p. 23

## IMPLANT GENESIS

### ★ Aktiv System

Implant: Ø 3,5/3,75/4,2/5  
Platform: Standard (Code 0040) p. 24

## INTRA-LOCK

### ★ IntraHex

Implant: Ø 3,75/4  
Platform: 3,5 (Code 0040) p. 24

## JDENTALCARE

### ★ JDEvolution/JDEvolution Plus

Implant: Ø 3,7  
Platform: 3,7 (Code 0040) p. 24

Implant: Ø 4,3/5  
Platform: 4 (Code 0040) p. 24

Implant: Ø 6  
Platform: 5 (Code 0040) p. 24

### ★ JD ICON

Implant: Ø 3,9  
Platform: 3,9 (Code 0022) p. 23

Implant: Ø 4,3  
Platform: 4 (Code 0022) p. 23

Implant: Ø 5  
Platform: 4,7 (Code 0022) p. 23

## LEADER

### ★ Tixos Internal Hex

Implant: Ø 3,3  
Platform: 3,5 (Code 0040) p. 24

Implant: Ø 3,75  
Platform: 4 (Code 0040) p. 24

## MEGAGEN

### ★ AnyRidge

Implant: Ø 3,5  
Platform: Small (Code 0015) p. 22

Implant: Ø 4/4,5  
Platform: Regular (Code 0015) p. 22

Implant: Ø 5/5,5  
Platform: Wide (Code 0015) p. 22

### ★ AnyOne Internal

Implant: Ø 3,5/4/4,5/5/6/7  
Platform: General (Code 0030) p. 23

## MIS

### ★ Seven

Implant: Ø 3,75/4,2  
Platform: Standard (Code 0040) p. 24

### ★ M4

Implant: Ø 3,75/4,2  
Platform: Standard (Code 0040) p. 24

## MOZO-GRAU

### ★ MG Inhex

Implant: Ø 3,75/4,25  
Platform: 2,8 Standard (Code 0004) p. 22

## MPI

### ★ Privilege CM

Implant: Ø 3,5/4  
Platform: Regular (Code 0004) p. 22

### ★ Excellence CM

Implant: Ø 3,5/4  
Platform: Regular (Code 0004) p. 22

## NEOBIOTECH

### ✦ IS Implant: System

Implant: Ø 4  
Platform: Regular 4 (Code 0030) p. 23

Implant: Ø 4,5  
Platform: Regular 4,5 (Code 0030) p. 23

Implant: Ø 5  
Platform: Wide 5 (Code 0030) p. 23

## NOBEL BIOCARE

### ✦ Active

Implant: Ø 3,5  
Platform: Narrow (Code 0021) p. 22

Implant: Ø 4,3/5  
Platform: Regular (Code 0022) p. 23

### ✦ NobelParallel

Implant: Ø 3,75  
Platform: Narrow (Code 0021) p. 22

Implant: Ø 4,3/5  
Platform: Regular (Code 0022) p. 23

## NORIS MEDICAL

### ✦ Tuff

Implant: Ø 3,3/3,75/4,2/5/6  
Platform: 3,75 (Code 0040) p. 24

### ✦ Tuff TT

Implant: Ø 3,3/3,75/4,2/5/6  
Platform: 3,75 (Code 0040) p. 24

### ✦ Onix

Implant: Ø 3,3/3,75/4,2/5/6  
Platform: 3,75 (Code 0040) p. 24

### ✦ Cortical

Implant: Ø 4,0/5/6  
Platform: 3,75 (Code 0040) p. 24

### ✦ PteryCore

Implant: Ø 4,2  
Platform: 3,75 (Code 0040) p. 24

### ✦ PteryFit

Implant: Ø 4,2  
Platform: 3,75 (Code 0040) p. 24

## OSTEOPLUS

### ✦ Shi

Implant: Ø 3,3 / 3,75 / 4,2  
Platform: 3,5 (Code 0040) p. 24

## OSSTEM IMPLANT

### ✦ TS

Implant: Ø 4/4,5/5/6/7  
Platform: Regular (Code 0030) p. 23

## PROCLINIC

### ✦ Aqua CM

Implant: Ø 3,5/4/5  
Platform: 2,82 (Code 0004) p. 22

### ✦ Cylindrical Internal/Conical Internal

Implant: Ø 3,3/3,75/4,25/5//3,5/4/5  
Platform: 3,5 (Code 0040) p. 24

## SEWON MEDIX

### ✦ IH2 SLA SYSTEM

Implant: Ø 3,5/4/4,5/5  
Platform: Regular (Code 0030) p. 23

### ✦ IH2 RBM SYSTEM

Implant: Ø 3,5/4/4,5/5  
Platform: Regular (Code 0030) p. 23

## SGS

### ✦ P1

Implant: Ø 3,2/3,75/4,2/5/6  
Platform: 3,75 (Code 0040) p. 24

### ✦ P7

Implant: Ø 3,2/3,75/4,2/4,5/5/6  
Platform: 3,75 (Code 0040) p. 24

## SIGNO VINCES

### ✦ Compact

Implant: Ø 4,5  
Platform: CM3,8 (Code 0004) p. 22

### ✦ Duocon

Implant: Ø 3,8  
Platform: CM3,8 (Code 0004) p. 22

### ✦ Infra

Implant: Ø 3,3/3,8/4,6  
Platform: CM (Code 0004) p. 22

## SOUTHERN IMPLANTS

### ✦ Deep Conical

Implant: Ø 3,5/4  
Platform: 2,95/3,1 (Code 0004) p. 22

### ✦ Internal Hex

Implant: Ø 3,75/4,2/5  
Platform: Universal (Code 0040) p. 24

## STRAUMANN

### ✦ Bone Level

Implant: Ø 3,3  
Platform: NC- 3,3 (Code 0033) p. 23

Implant: Ø 4,1  
Platform: RC-4,1 (Code 0035) p. 24

Implant: Ø 4,8  
Platform: RC-4,8 (Code 0035) p. 24

### ✦ BLX

Implant: Ø 3,5/3,75/4/4,5  
Platform: RB (Regular Base) (Code 0207) p. 25

## TITANIUM-FIX

### ✦ b-fix

Implant: Ø 3,5/4  
Platform: Regular (Code 0004) p. 22

## TRE-OSS

### ✦ Simple

Implant: Ø 3,3/3,75/5  
Platform: 3,75 Amarillo (Code 0040) p. 24

## TRI DENTAL IMPLANTS

### ✦ TRI-Vent

Implant: Ø 3,75/4,1/4,7  
Platform: 3,5 (Code 0040) p. 24

## UFIT

### ✦ Gt2

Implant: Ø 3,5  
Platform: Mini (Code 0004) p. 22

### ✦ Nt2

Implant: Ø 3,5  
Platform: Mini (Code 0004) p. 22

## VULKAN IMPLANTS

### ✦ IN-Hex

Implant: Ø 3,3/3,75/4,2/5  
Platform: 3,75 (Code 0040) p. 24

## YES IMPLANT

### ✦ S-SYSTEM

Implant: Ø 3,3/3,5  
Platform: Narrow (Code 0030) p. 23

Implant: Ø 4/4,5  
Platform: Regular (Code 0030) p. 23

Implant: Ø 5/5,5  
Platform: Wide (Code 0030) p. 23

## ZIMMER

### ✦ Screw-Vent

Implant: Ø 3,7/4,1  
Platform: 3,5 (Code 0040) p. 24

## COMPATIBLE with 0004

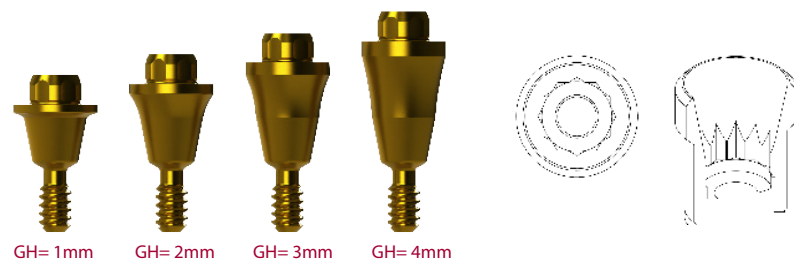
MULTI-UNIT				
	GINGIVAL HEIGHT	GINGIVAL HEIGHT	GINGIVAL HEIGHT	GINGIVAL HEIGHT
	1 mm	2 mm	3 mm	4 mm
R	42.303.004.01-2	42.303.004.02-2	42.303.004.03-2	42.303.004.04-2

### DAS LIBRARIES:

MU SCANBODY DAS\_MU\_0004\_PREMIUM

MU SCANALOG DAS\_MU\_SA\_0004\_PREMIUM

DYNAMIC μSCANBODY DAS\_MU\_I/IG\_0004\_PREMIUM



GH= 1mm GH= 2mm GH= 3mm GH= 4mm

## COMPATIBLE with 0015

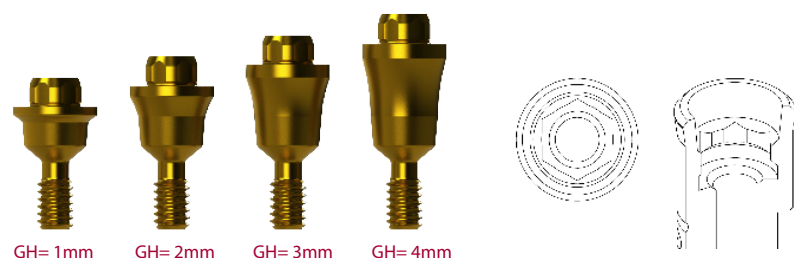
MULTI-UNIT				
	GINGIVAL HEIGHT	GINGIVAL HEIGHT	GINGIVAL HEIGHT	GINGIVAL HEIGHT
	1 mm	2 mm	3 mm	4 mm
R	42.303.015.01-2	42.303.015.02-2	42.303.015.03-2	42.303.015.04-2

### DAS LIBRARIES:

MU SCANBODY DAS\_MU\_0015\_PREMIUM

MU SCANALOG DAS\_MU\_SA\_0015\_PREMIUM

DYNAMIC μSCANBODY DAS\_MU\_I/IG\_0015\_PREMIUM



GH= 1mm GH= 2mm GH= 3mm GH= 4mm

## COMPATIBLE with 0021

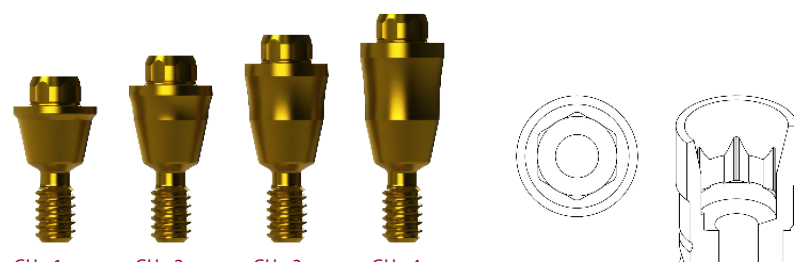
MULTI-UNIT				
	GINGIVAL HEIGHT	GINGIVAL HEIGHT	GINGIVAL HEIGHT	GINGIVAL HEIGHT
	1 mm	2 mm	3 mm	4 mm
R	42.302.021.01-2	42.302.021.02-2	42.302.021.03-2	42.302.021.04-2

### DAS LIBRARIES:

MU SCANBODY DAS\_MU\_0021\_PREMIUM

MU SCANALOG DAS\_MU\_SA\_0021\_PREMIUM

DYNAMIC μSCANBODY DAS\_MU\_I/IG\_0021\_PREMIUM



GH= 1mm GH= 2mm GH= 3mm GH= 4mm

## COMPATIBLE with 0022

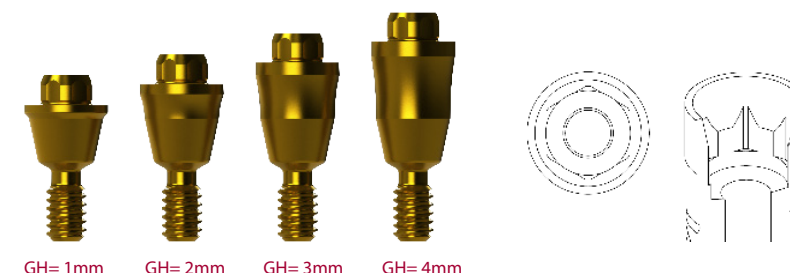
MULTI-UNIT				
	GINGIVAL HEIGHT	GINGIVAL HEIGHT	GINGIVAL HEIGHT	GINGIVAL HEIGHT
	1 mm	2 mm	3 mm	4 mm
R	42.303.022.01-2	42.303.022.02-2	42.303.022.03-2	42.303.022.04-2

### DAS LIBRARIES:

MU SCANBODY DAS\_MU\_0022\_PREMIUM

MU SCANALOG DAS\_MU\_SA\_0022\_PREMIUM

DYNAMIC μSCANBODY DAS\_MU\_I/IG\_0022\_PREMIUM



GH= 1mm GH= 2mm GH= 3mm GH= 4mm

## COMPATIBLE with 0030

MULTI-UNIT				
	GINGIVAL HEIGHT	GINGIVAL HEIGHT	GINGIVAL HEIGHT	GINGIVAL HEIGHT
	1 mm	2 mm	3 mm	4 mm
R	42.303.030.01-2	42.303.030.02-2	42.303.030.03-2	42.303.030.04-2

### DAS LIBRARIES:

MU SCANBODY DAS\_MU\_0030\_PREMIUM

MU SCANALOG DAS\_MU\_SA\_0030\_PREMIUM

DYNAMIC μSCANBODY DAS\_MU\_I/IG\_0030\_PREMIUM



GH= 1mm GH= 2mm GH= 3mm GH= 4mm

## COMPATIBLE with 0033

MULTI-UNIT				
	GINGIVAL HEIGHT	GINGIVAL HEIGHT	GINGIVAL HEIGHT	GINGIVAL HEIGHT
	1 mm	2 mm	3 mm	4 mm
R	42.302.033.01-2	42.302.033.02-2	42.302.033.03-2	42.302.033.04-2

### DAS LIBRARIES:

MU SCANBODY DAS\_MU\_0033\_PREMIUM

MU SCANALOG DAS\_MU\_SA\_0033\_PREMIUM

DYNAMIC μSCANBODY DAS\_MU\_I/IG\_0033\_PREMIUM



GH= 1mm GH= 2mm GH= 3mm GH= 4mm

## COMPATIBLE with 0035

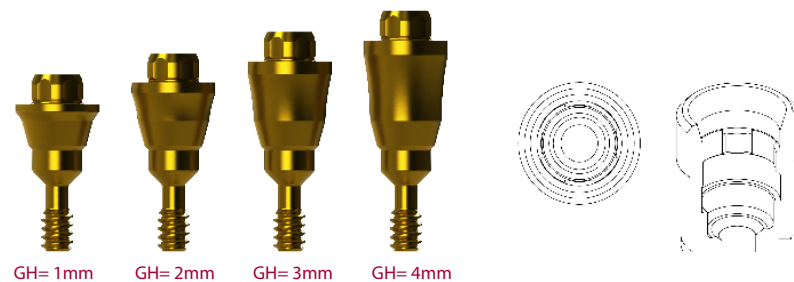
MULTI-UNIT				
	GINGIVAL HEIGHT	GINGIVAL HEIGHT	GINGIVAL HEIGHT	GINGIVAL HEIGHT
	1 mm	2 mm	3 mm	4 mm
R	42.303.035.01-2	42.303.035.02-2	42.303.035.03-2	42.303.035.04-2

### DAS LIBRARIES:

MU SCANBODY DAS\_MU\_0035\_PREMIUM

MU SCANALOG DAS\_MU\_SA\_0035\_PREMIUM

DYNAMIC μSCANBODY DAS\_MU\_I/IG\_0035\_PREMIUM



GH= 1mm GH= 2mm GH= 3mm GH= 4mm

## COMPATIBLE with 0207

MULTI-UNIT				
	GINGIVAL HEIGHT	GINGIVAL HEIGHT	GINGIVAL HEIGHT	GINGIVAL HEIGHT
	1 mm	2 mm	3 mm	4 mm
R	42.302.207.01-2	42.302.207.02-2	42.302.207.03-2	42.302.207.04-2

### DAS LIBRARIES:

MU SCANBODY DAS\_MU\_0207\_PREMIUM

MU SCANALOG DAS\_MU\_SA\_0207\_PREMIUM

DYNAMIC μSCANBODY DAS\_MU\_I/IG\_0207\_PREMIUM



GH= 1mm GH= 2mm GH= 3mm GH= 4mm

## COMPATIBLE with 0040

MULTI-UNIT				
	GINGIVAL HEIGHT	GINGIVAL HEIGHT	GINGIVAL HEIGHT	GINGIVAL HEIGHT
	1 mm	2 mm	3 mm	4 mm
R	42.302.040.01-2	42.302.040.02-2	42.302.040.03-2	42.302.040.04-2

### DAS LIBRARIES:

MU SCANBODY DAS\_MU\_0040\_PREMIUM

MU SCANALOG DAS\_MU\_SA\_0040\_PREMIUM

DYNAMIC μSCANBODY DAS\_MU\_I/IG\_0040\_PREMIUM



GH= 1mm GH= 2mm GH= 3mm GH= 4mm

## COMPATIBLE with 0169

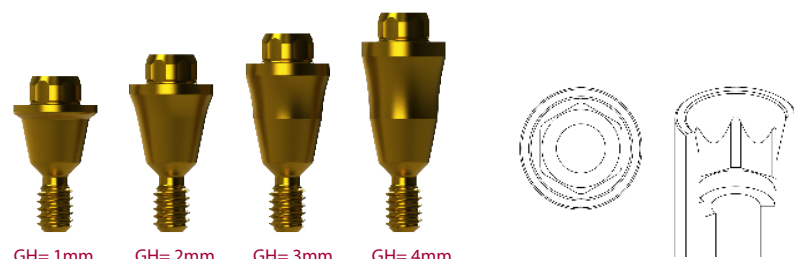
MULTI-UNIT				
	GINGIVAL HEIGHT	GINGIVAL HEIGHT	GINGIVAL HEIGHT	GINGIVAL HEIGHT
	1 mm	2 mm	3 mm	4 mm
R	42.302.169.01-2	42.302.169.02-2	42.302.169.03-2	42.302.169.04-2

### DAS LIBRARIES:

MU SCANBODY DAS\_MU\_0169\_PREMIUM

MU SCANALOG DAS\_MU\_SA\_0169\_PREMIUM

DYNAMIC μSCANBODY DAS\_MU\_I/IG\_0169\_PREMIUM



GH= 1mm GH= 2mm GH= 3mm GH= 4mm

# TALLADIUM GUARANTEE

## TERMS AND CONDITIONS

These guarantee terms and conditions ("T&C") cover the entire range of Talladium products ("Products"), manufactured by TALLADIUM ESPAÑA S.L. and distributed by Geoda Medical S.L. or official dealers. The guarantee described in these T&C is exclusively in benefit of the clinician ("Clinician") and of the dental technician ("Technician") and not for the benefit of third parties or institutions, including patients.

## GUARANTEE PERIOD

TALLADIUM ESPAÑA S.L. offers a lifelong guarantee for its entire range of products starting from the date of issue of the invoice.

## GUARANTEE SCOPE

Subject to the limitations and exceptions described in these T&C, TALLADIUM ESPAÑA S.L. will offer the following benefits:

**QUALITY:** If there are defects in the materials or in the manufacturing of the Product, TALLADIUM ESPAÑA S.L. will replace the Product with no additional cost.

**SAFETY:** If, having complied with all the product indications, the prosthesis should have to be made again, due to a fault in the Dynamic Abutment® or Dynamic Titanium Base® system, TALLADIUM ESPAÑA S.L. will replace the abutments and screws necessary to remake the prosthesis, as well as the costs derived from its manufacturing.

In case of having used our products and having complied with all the product indications, the implants suffer any damage, TALLADIUM ESPAÑA S.L. will pay the cost of the implants. This coverage will only be valid during the first 6 months after the collocation of the prosthesis which includes our products.

## CLAIM REQUIREMENTS AND PROCEDURE

To receive the benefits indicated in these T&C, the treating Clinician must satisfy the following requirements:

- The claim must be notified to TALLADIUM ESPAÑA S.L. within (30) days since the date the claimed defect was detected.
- This requires that the Clinician or Technician must contact the customer service department by telephone or by e-mail to make the claim.
- A claim form will be completed, which, together with a document or report which justifies the faulty Product and the faulty Product itself, will be sent by the customer to TALLADIUM ESPAÑA S.L. offices, within the previously indicated period.
- Clinicians or Technicians presenting a claim in agreement with these T&C must be up to date in any payments owing to TALLADIUM ESPAÑA S.L. or to any of its subsidiaries, at the time when the claim form is presented.
- All the use procedures of our Products must be carried out in agreement with the instructions of TALLADIUM ESPAÑA S.L. as well as in accordance with commonly accepted dentistry practices.
- The expenses derived from this procedure will be assumed by the customer. The return shipping costs will be assumed by TALLADIUM ESPAÑA S.L. in all those cases covered by these T&C.

Regardless of the guarantee rights, claims should be notified as soon as possible in order to comply with regulatory requirements.

## GENERAL LIMITATIONS OF THIS GUARANTEE

With the exception of the guarantee described in these T&C, neither TALLADIUM ESPAÑA S.L. nor its representatives, nor third parties manufacturing or distributing the Products, represent or offer a guarantee, agreement or any other express or implicit, oral or written, commitment, with respect to the Products (without limitation), including guarantees involved in the marketing, durability or suitability for individual uses or purposes.

In addition and within the maximum extent permitted by the relative law, TALLADIUM ESPAÑA S.L. rejects (on its own behalf, and on behalf of its representatives and third parties that manufacture or distribute Products) any responsibility with respect to any direct or indirect damage caused, which may result from or be a consequence of the design, composition of the dental prosthesis into which the Products are integrated.

## GUARANTEE EXCLUSIONS

TALLADIUM ESPAÑA S.L. limits this guarantee to:

- Transformed abutments that form part of the dental prosthesis. But not the screws used to anchor them.
- Clinical screws that have been in the mouth for more than 2 years.

## AMENDMENT OR SUSPENSION OF THE GUARANTEE

TALLADIUM ESPAÑA S.L. reserves the right to amend or withdraw these T&C at any time and without prior notification. Any modification or suspension shall not affect products already placed in patients.

Ed.2019-01



## DYNAMIC ABUTMENT® SOLUTIONS

VIRGINIA WOOLF, 17 · 25005 · LLEIDA (SPAIN)

INTERNATIONAL +34 873 450 709

das@dynamicabutment.com

SPAIN +34 973 289 580

spain@dynamicabutment.com

*Dynamic Abutment® Solutions is a trademark of the manufacturer Talladium España S.L*

*The information included in this catalogue is exclusively addressed to professionals in dental sector.*

*All commercial trademarks mentioned herein are fully registered by their respective companies, and the images that appear are just to provide an orientation.*

*Talladium reserves the right to modify this document without previous notice.*

*Talladium is not responsible for the inadequate execution of these products if the warning indications corresponding to every reference are not contemplated.*

*All of the products listed in this brochure are marking in accordance with CE legislation. Some of the products are not authorized for sale and distribution or do not have a sales license in some countries according to other legislations (FDA, MDSAP, etc.) Please ask for information: das@dynamicabutment.com*

 *Marking in accordance with CE legislation and applicable sanitary regulations*



*Visit our Online Store to find all our products and compatibilities :*

[www.dynamicabutmentstore.com](http://www.dynamicabutmentstore.com)

Ed.2020-02



DYNAMIC ABUTMENT® SOLUTIONS

Virginia Woolf, 17

25005 · Lleida · Spain

+34 873 450 709

[das@dynamicabutment.com](mailto:das@dynamicabutment.com)

[www.dynamicabutment.com](http://www.dynamicabutment.com)

DYNAMIC ABUTMENT® SOLUTIONS