

MULTI-UNIT DASSYSTEM

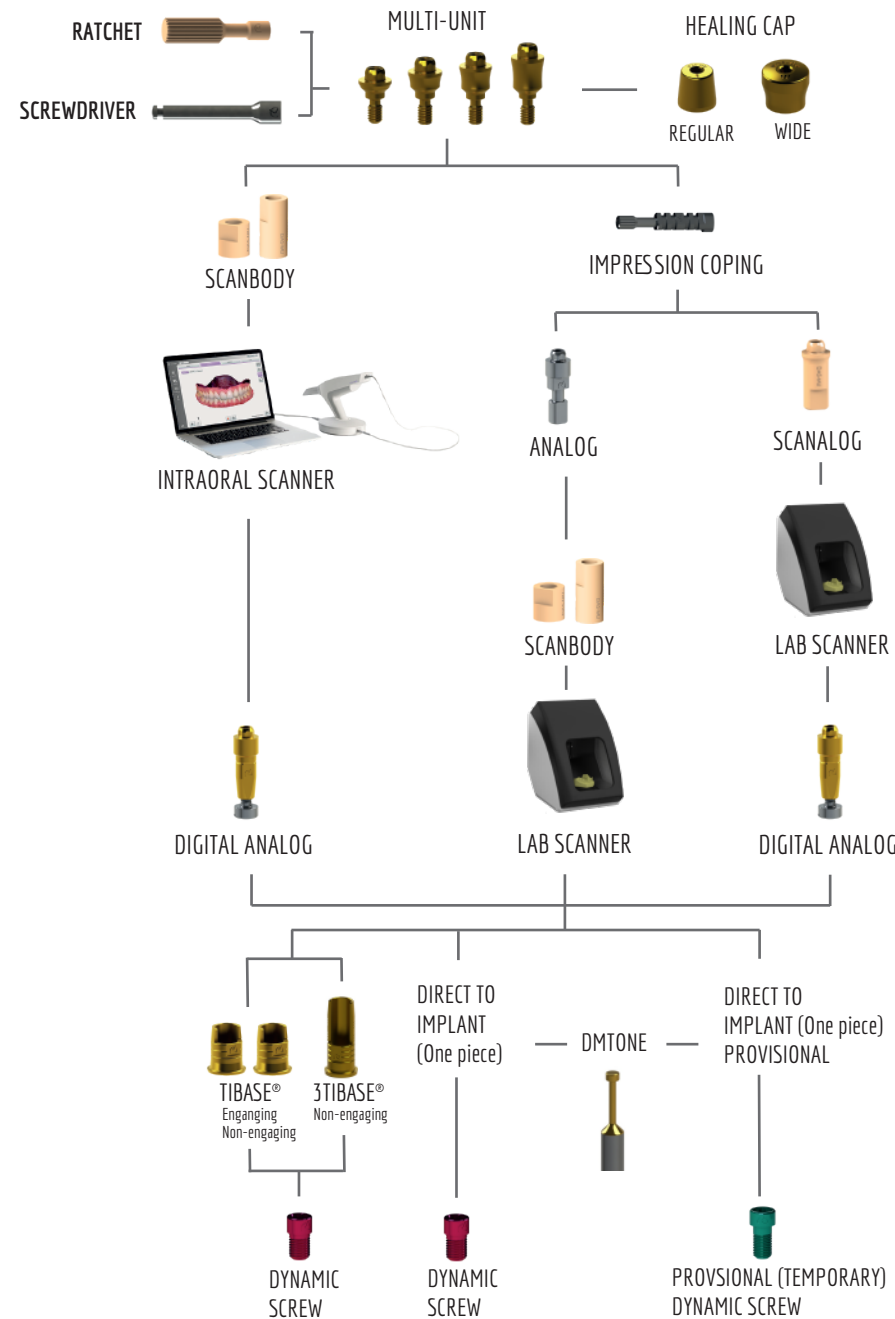
Work different, work better



DYNAMIC ABUTMENT® SOLUTIONS

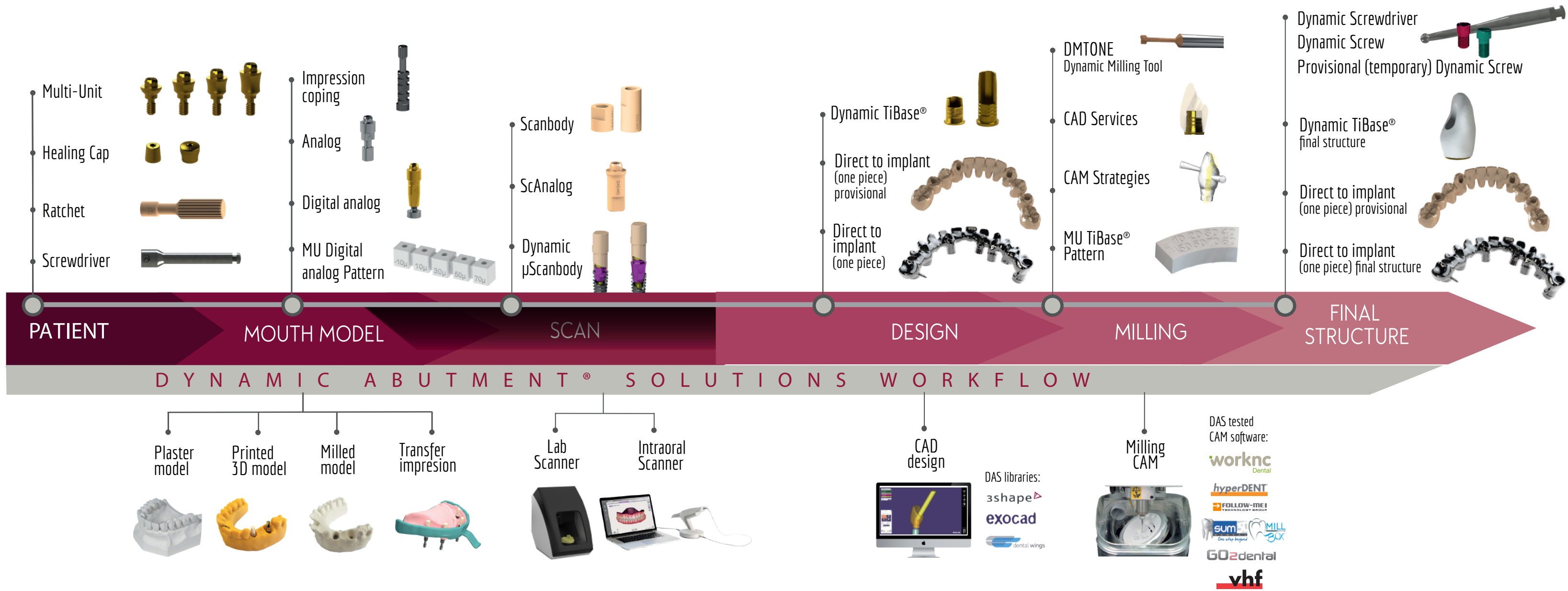
MULTI-UNIT DASSYSTEM

Work different, work better



Digital workflow from the beginning to the end of the work. With both intraoral and lab scanners. Also available with full analogue workflow.

DIGITAL WORKFLOW - MULTI-UNIT DAS SYSTEM



MULTI-UNIT

The Multi-unit abutment has been carefully designed to rehabilitate partially or fully edentulous arches, as well as individual.

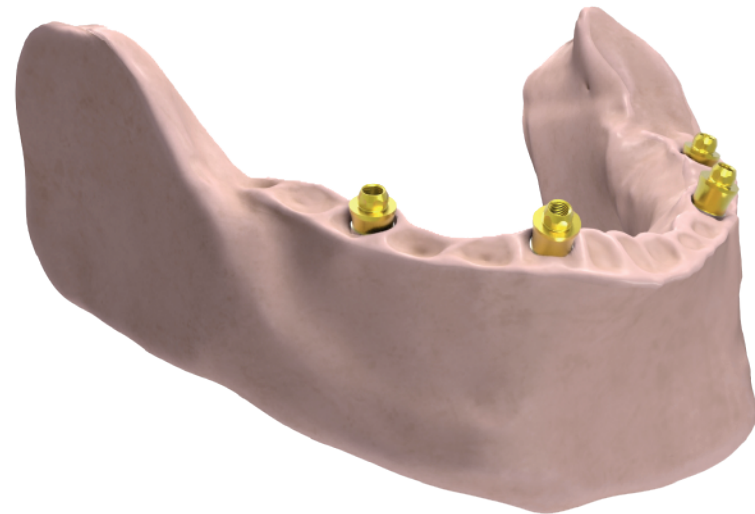
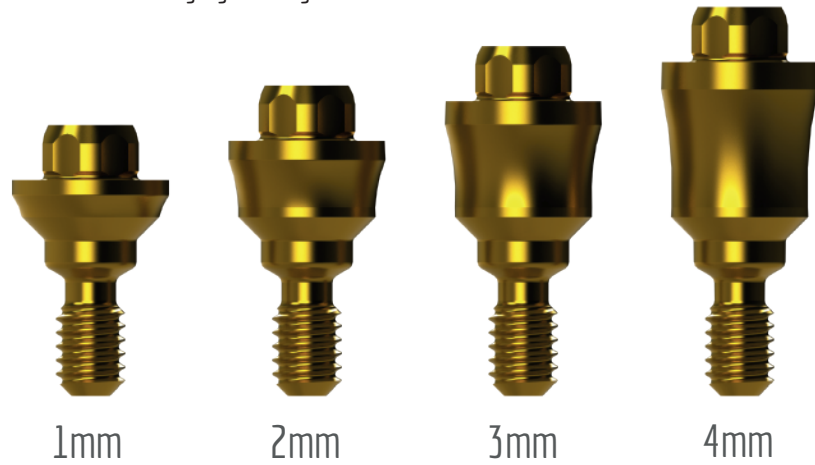
Maximum diameter of the MU is 4mm, being narrower it avoids contact with the bone



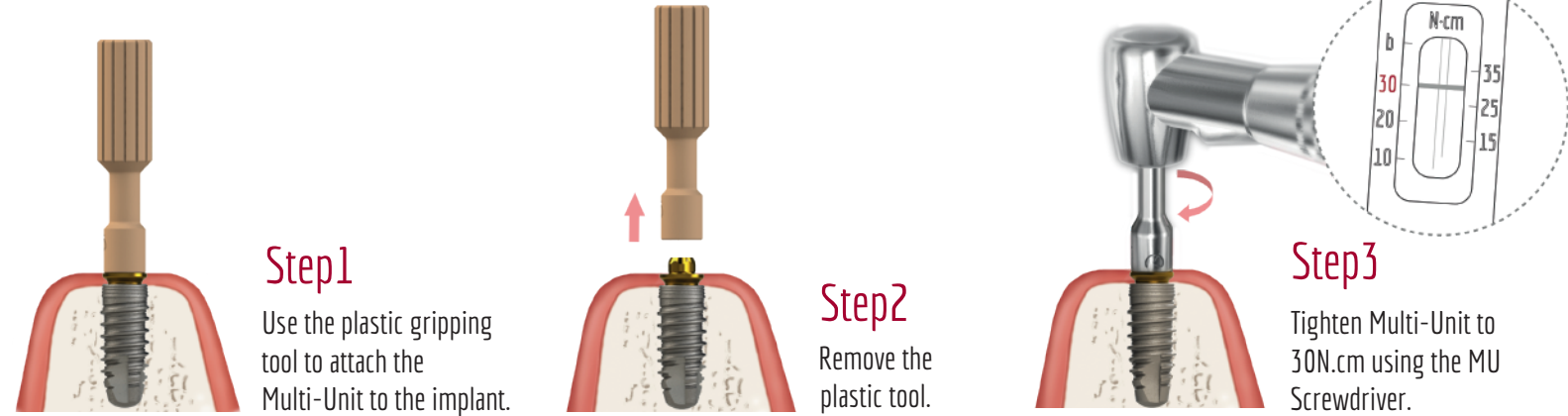
Lower cone height which allows greater disparallelism than the classic multi-unit.
Divergence between implants: 50°

Concave design facilitates healing and soft tissue adaptation.

Available in 4 gingival heights.



MU Insertion Procedure



Step1

Use the plastic gripping tool to attach the Multi-Unit to the implant.

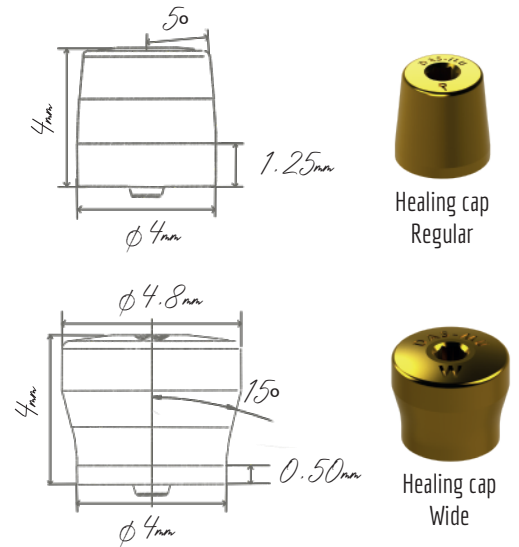
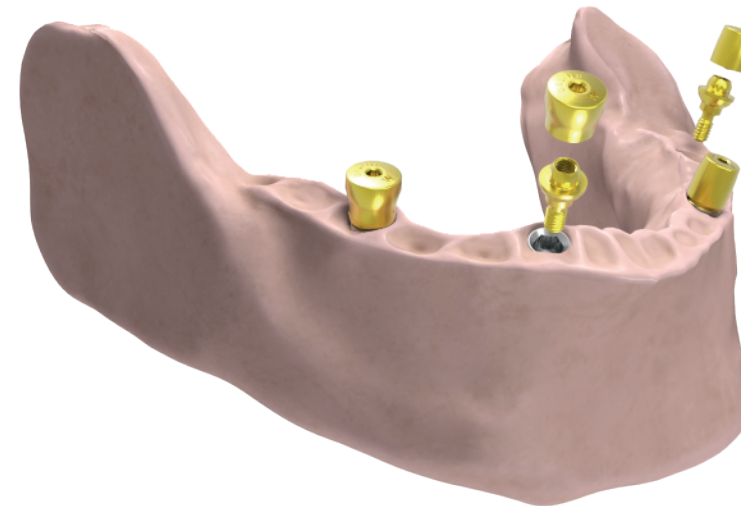
Step2

Remove the plastic tool.

Step3

Tighten Multi-Unit to 30N.cm using the MU Screwdriver.

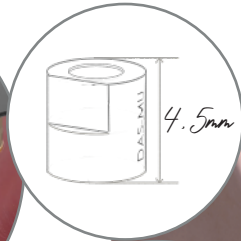
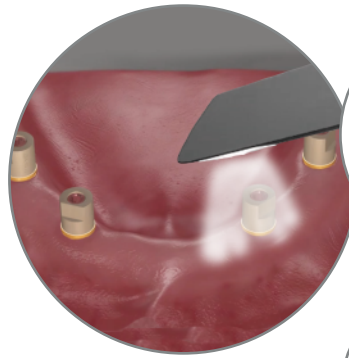
MU Healing Caps



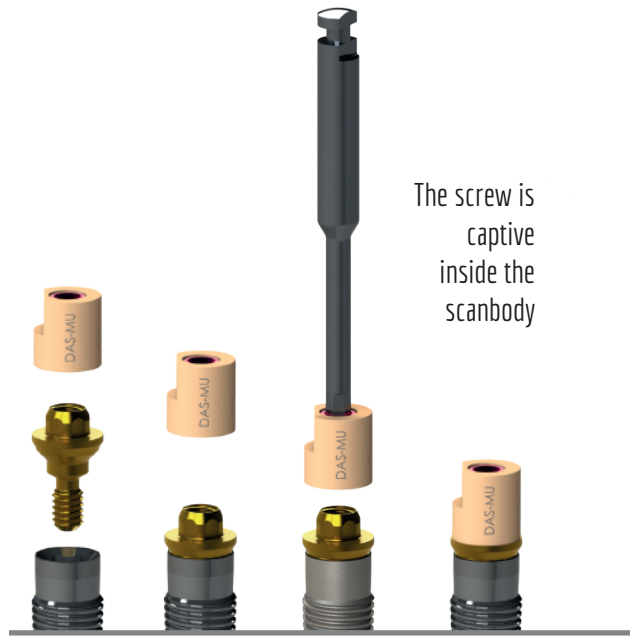
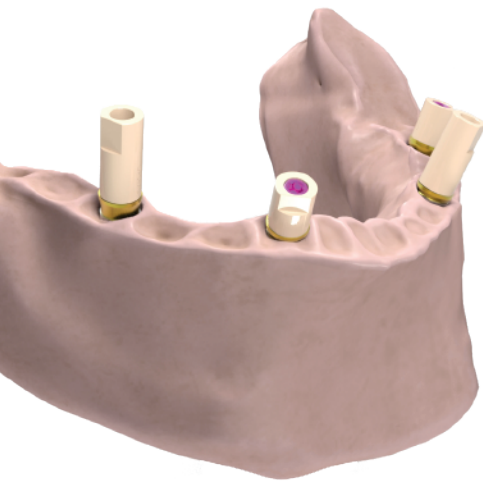
Healing cap Regular

Healing cap Wide

MULTI-UNIT SCANBODY



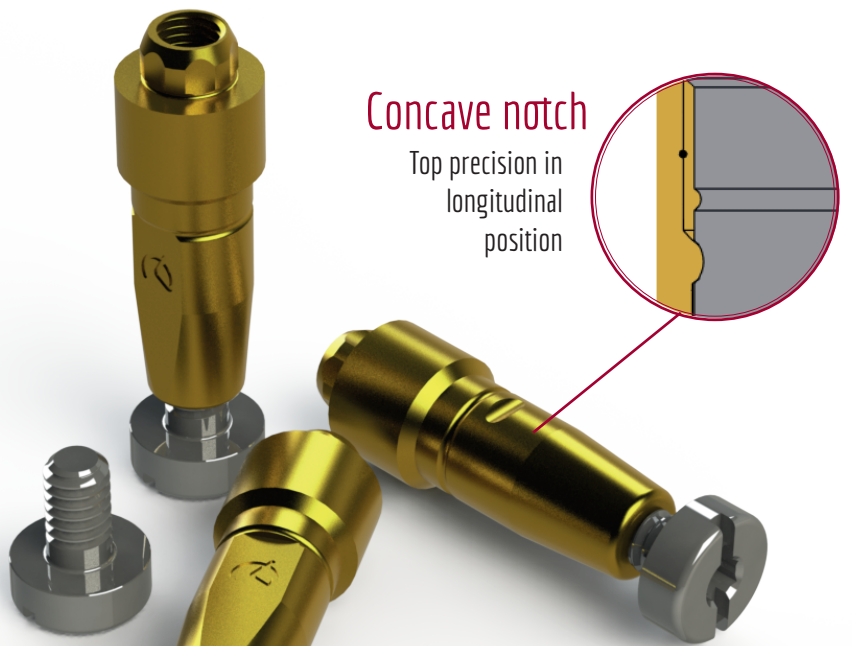
Two scanbody heights available in order to choose in which situation is better to use 4,5 or 8 mm.



The screw is captive inside the scanbody

DIGITAL ANALOG

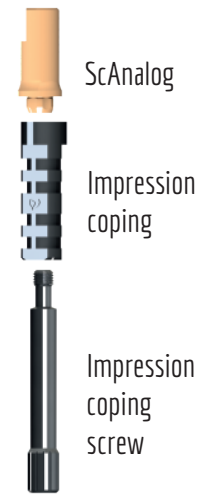
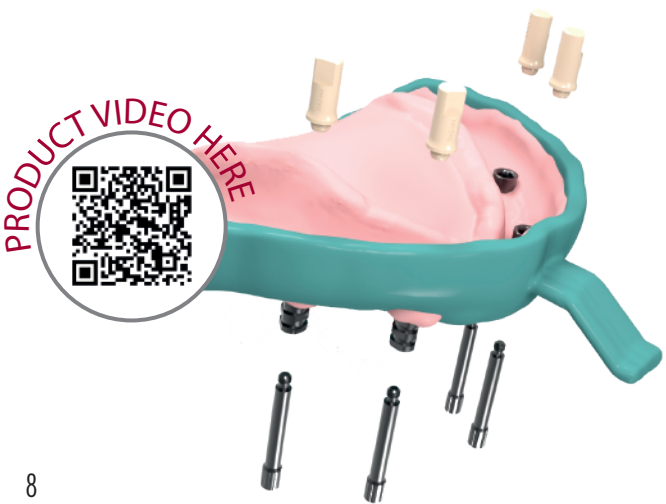
Digital analog of the dental implant to simulate implant position in a 3D printed dental model.



Concave notch
Top precision in longitudinal position

Screwed fastening
Prevents the analog from moving in Z

MULTI-UNIT SCANALOG

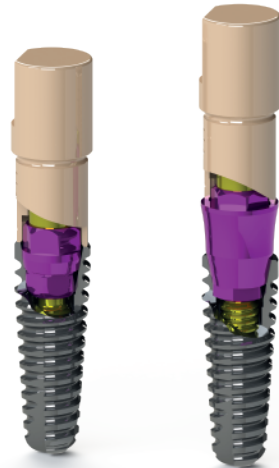


DYNAMIC μSCANBODY

All components of the Multi-Unit DAS System can also be used with the Dynamic μScanbody to scan direct to implant and select virtually the ideal gingival height Multi-unit.

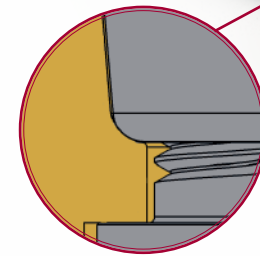
You can scan with the Dynamic μScanbody and then use the special Dynamic μScanbody library with the MU components.

For non-engaging prosthetic options only.

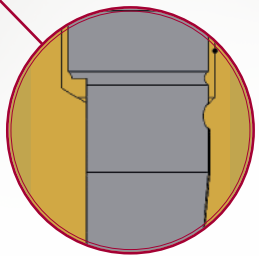


ANALOG

Also available traditional analog for plaster model.



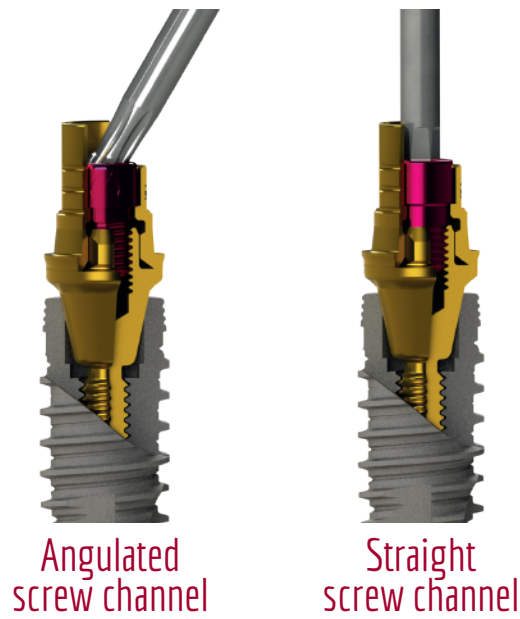
Curved Surface
Longitudinal cut to avoid rotation X-Y



Longitudinal cut
Longitudinal cut to avoid rotation X-Y

DYNAMIC TIBASE®

To correct **ANGULATION** up to **45°**



Angulated screw channel

Straight screw channel

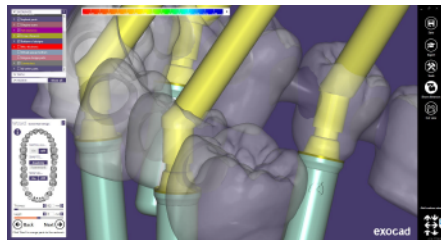


TIBASE®
NON-ENGAGING
ENGAGING



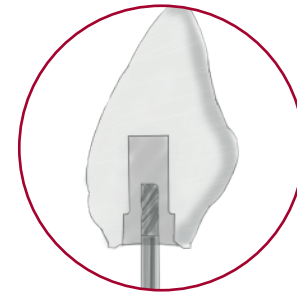
3TIBASE®
NON-ENGAGING

CAD DESIGN



DAS Multi-U nit system **allows** to **change** the **MU** in the **library** without rescanning or redesigning the case. That facilitates the lab and clinic work, as technician can change the MU without the need to make a new appointment with the patient to re-scan.

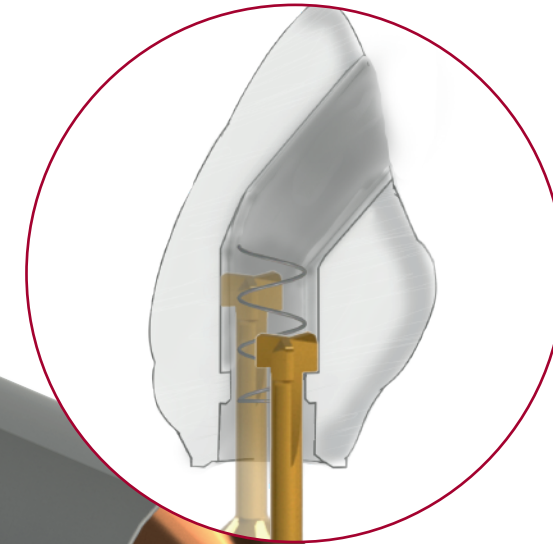
DIRECT TO IMPLANT (One piece)



Step 1
Crown with pre drill



Step 2
Crown with angled channel



Step 3
DMTONE

Crown with Dynamic Milling Tool. Milling the screw seat and increasing the diameter of the straight channel.

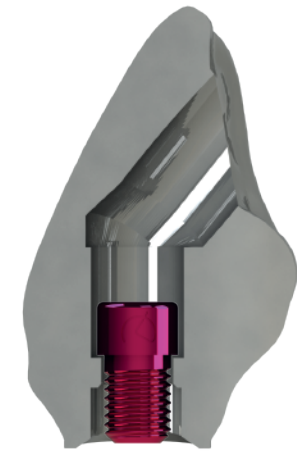


Dynamic screw



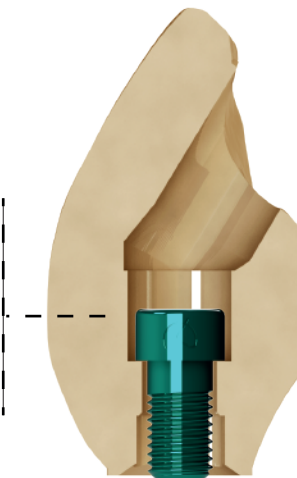
Provisional (temporary) Dynamic screw

Greater seating thickness
Greater contact surface between the screw and the material for greater safety in soft materials.



Final restorations 0-45°

Direct to implant libraries available R/NR

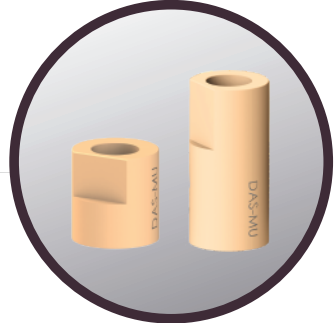


Provisional (temporary) restorations up to 35°

Provisional (temporary) Direct to implant libraries available R/NR

DAS MU LIBRARIES

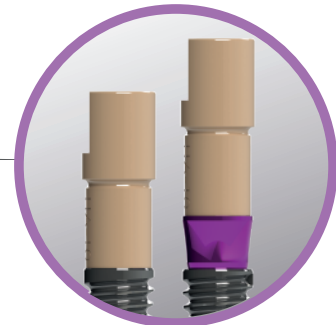
DAS MU PREMIUM library



MU Scanbody
 DAS_MU_4.5_XXXX*_PREMIUM
 DAS_MU_8_XXXX*_PREMIUM



MU ScAnalog
 DAS_MU_SA_XXXX*_PREMIUM



Dynamic μScanbody
 DAS_MU_I/IG_XXXX*_PREMIUM

*XXXX= compatibility code

MU DAS SYSTEM COMPONENTS



Ratchet
 49.409.000.01-2



Screwdriver
 43.321.316.01-2



Healing Cap Regular
 40.320.003.98-2



40.320.003.88-2 (Captive screw)



Healing Cap Wide
 40.320.003.99-2



40.320.003.89-2 (Captive screw)



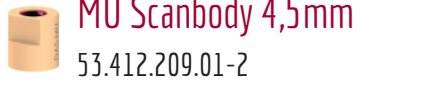
Impression coping
 29.301.000.10-2 (Engaging)
 29.301.000.11-2 (Non-engaging)



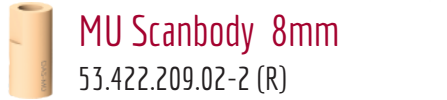
Analog
 22.612.209.01-2



Digital Analog
 34.312.209.01-2



MU Scanbody 4,5mm
 53.412.209.01-2



MU Scanbody 8mm
 53.422.209.02-2 (R)



MU ScAnalog
 23.412.209.01-2



MU Dynamic TiBase®
 31.312.209.01-2 (Engaging)



31.322.209.01-2 (Non-engaging)



MU Dynamic 3TiBase®
 31.322.209.21-2 (Non-engaging)



Dynamic Screw
 41.320.040.01-2



Provisional (temporary) Dynamic Screw
 41.320.050.02-2



Straight Screw
 40.320.003.06-2



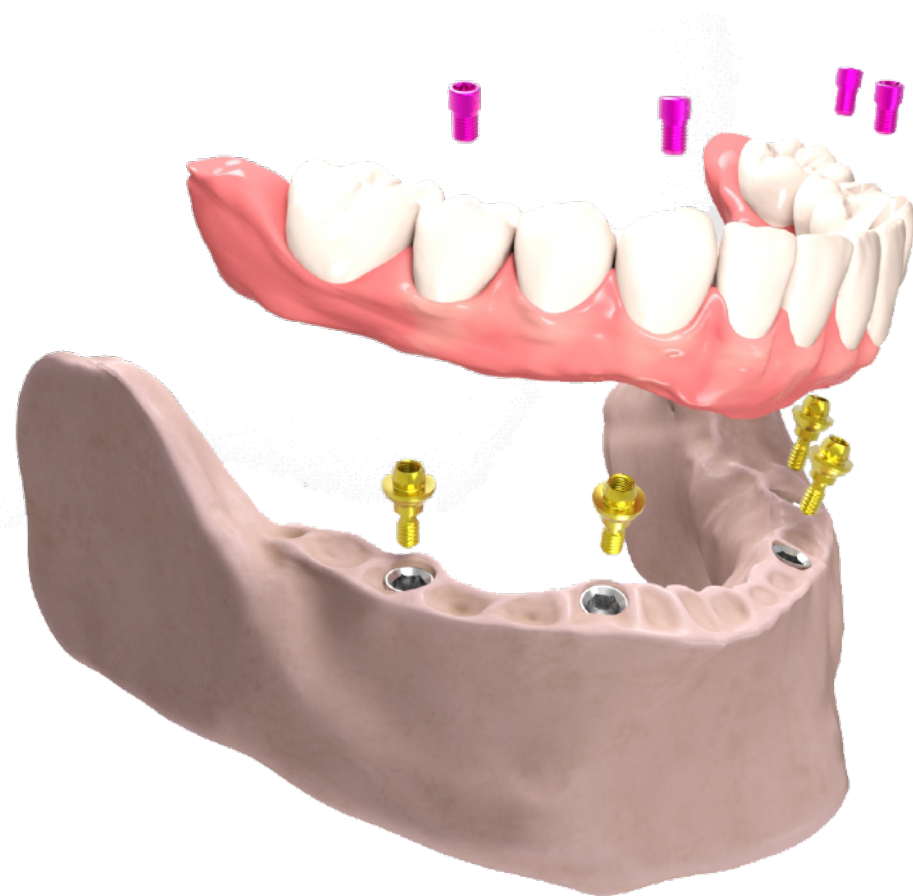
Dynamic Screwdriver
 43.618.201.01-2 (18mm)
 43.624.201.01-2 (24mm)
 43.632.201.01-2 (32mm)



Screwdriver Hex.1,2
 43.601.103.02-2



MU DMTone
 33.390.716.01-2 Shank Ø3
 33.490.716.01-2 Shank Ø4
 33.690.716.01-2 Shank Ø6



LIST OF COMPATIBILITIES AVAILABLE

AB	CORTEX	MPI
ACE	DENTIUM	NEODENT
ADIN	DIO IMPLANTS	NEOBIOTECH
ALPHABIO	EASY IMPLANT	NOBEL BIO CARE
ANCLADEN	EUROTEKNIKA	NORIS MEDICAL
ANKYLOS	HAHN IMPLANT (GLIDEWELL)	OSTEOPLUS
ARDS	HI-TEC	OSSTEM IMPLANT
ASTRA	HIOSSEN	PROCLINIC
AVINENT	IBS	SEWON MEDIX
BEGO	IDO IMPLANTS	SGS
BIOCONCEPT	IHDE DENTAL (IMBIODENT)	SIGNO VINCES
BIOGENESIS	IMPLANT DIRECT	SOUTHERN IMPLANTS
BIOHORIZONS	IMPLANT GENESIS	STRAUMANN
BIOMET 3i	INTRA-LOCK	TITANIUM - FIX
BIONER	JDENTALCARE	TRE-OSS
BIOTEC	LEADER	TRI DENTAL IMPLANTS
BTK	MEDENTIS	UFIT
B&W	MEGAGEN	VULKAN IMPLANTS
CAMLOG	MIS	YES IMPLANT
CONEXÃO SISTEMA DE PRÓTESE	MOZO-GRAU	ZIMMER

AB

- ✦ I2
Implant: Ø 3,5/3,75/4,2/4,5/ 5/6
Platform: Standard (Code 0040) p.25
- ✦ I22
Implant: Ø 3,75/4,22
Platform: Standard (Code 0040) p. 25
- ✦ I5
Implant: Ø 3,5/3,75/4,2/4,5/5/6/7/8
Platform: Standard (Code 0040) p. 25
- ✦ I55
Implant: Ø 3,75/4,2/4,5/5/6/7/8
Platform: Standard (Code 0040) p. 25
- ✦ I10
Implant: Ø 4,2/5
Platform: Standard (Code 0040) p. 25
- ✦ I15
Implant: Ø 6/7/8
Platform: Standard (Code 0040) p. 25

ACE

- ✦ Infinity Internal Hex
Implant: Ø 3,7/4,1
Platform: 3,5 (Code 0040) p. 25

ADIN

- ✦ Swell
Implant: Ø 3,3
Platform: 3,45 (Code 0040) p. 25
- Implant: Ø 3,75/4,2
Platform: 3,6 (Code 0040) p. 25
- Implant: Ø 5
Platform: 4 (Code 0040) p. 25
- Implant: Ø 6
Platform: 4,6 (Code 0040) p. 25

✦ Touareg-S / Touareg-OS

- Implant: Ø 3,5
Platform: 3,45 (Code 0040) p. 25
- Implant: Ø 3,75/4,2
Platform: 3,6 (Code 0040) p. 25
- Implant: Ø 5
Platform: 4 (Code 0040) p. 25
- Implant: Ø 6
Platform: 5 (Code 0040) p. 25

✦ Touareg CloseFit

- Implant: Ø 3,5
Platform: RP (Code 0021) p. 24

ALPHABIO

- ✦ Internal Hex Connection (IH) SPI
Implant: Ø 3,3/3,75/4,2/5/6
Platform: Universal (Code 0040) p. 25
- ✦ Internal Hex Connection (IH) ICE
Implant: Ø 3,7/3,75/4,2/4,65/5,3
Platform: Universal (Code 0040) p. 25
- ✦ Internal Hex Connection (IH) DFI
Implant: Ø 3,3/3,75/4,2/4,5
Platform: Universal (Code 0040) p. 25
- ✦ Internal Hex Connection (IH) ATID
Implant: Ø 3,3/3,75/4,2/5/6
Platform: Universal (Code 0040) p. 25
- ✦ Internal Hex Connection (IH) NEO
Implant: Ø 3,75/4,2/5
Platform: 3,5 (Code 0040) p. 25
- ✦ Conical Standard Connection (CS)
Implant: Ø 3,75/4,2/5
Platform: Standard (Code 0169) p. 28

ANCLADEN

- ✦ Anclalock
Implant: Ø 3,75/4,25/5
Platform: 3,5 (Code 0040) p. 25

ARDS

- ✦ Smart
Implant: Ø 3,75/4,2/4,5
Platform: 3,75 (Code 0040) p. 25
- ✦ Classic
Implant: Ø 3,75/4,2/4,5
Platform: 3,75 (Code 0040) p. 25
- Implant: Ø 3,3/3,75/4,2/5/6
Platform: 3,75 (Code 0040) p. 25
- ✦ Premium
Implant: Ø 3,3/3,75/4,2/5/6
Platform: 3,75 (Code 0040) p. 25
- ✦ CIT
Implant: Ø 3,3/3,75/4,2/5/6
Platform: 3,75 (Code 0040) p. 25

ANKYLOS

- ✦ Ankylos
Implant: Ø 3,5
Platform: 3,5 (Code 0075) p. 26
- Implant: Ø 4,5
Platform: 4,5 (Code 0075) p. 26
- Implant: Ø 5,5
Platform: 5,5 (Code 0075) p. 26
- Implant: Ø 7
Platform: 7 (Code 0075) p. 26

ASTRA

- ✦ Aqua
Implant: Ø 3,5/4
Platform: Aqua (Code 0004) p. 22

✦ Evolution (Internal)

- Implant: Ø 3,6
Platform: 3,6 (Code 0006) p. 23
- Implant: Ø 4,8
Platform: 4,8 (Code 00091) p. 26

AVINENT

- ✦ HI/IC
Implant: Ø 3,1/3,5/4
Platform: 3,5 (Code 0040) p. 25

BIOCONCEPT

- ✦ BC Bone Level
Implant: Ø 3,3
Platform: Narrow (Code 0033) p. 25
- Implant: Ø 4,1/4,8
Platform: Regular (Code 0035) p. 25
- ✦ BV Tapered Bone Level
Implant: Ø 4/4,5/5
Platform: Regular (Code 0030) p. 24

BIOHORIZONS

- ✦ Tapered Internal
Implant: Ø 3,8
Platform: 3,5 (Yellow) (Code 0040) p. 25
- Implant: Ø 3/3,4
Platform: 3,5 (Grey) (Code 0102) p. 26
- ✦ Internal
Implant: Ø 3,5/4
Platform: 3,5 (Yellow) (Code 0040) p. 25

BIOMET 3i

- ✦ Certain
Implant: Ø 3,25/4
Platform: 3,4 (Code 0001) p. 22

- Implant: Ø 4/5
Platform: 4,1 (Code 0001) p. 22

BIONER

- ✦ Hikelt
Implant: Ø 3,8
Platform: 3,95 (Code 0040) p. 25
- ✦ TopDM
Implant: Ø 3,5
Platform: 3,5 (Code 0021) p. 24
- Implant: Ø 4
Platform: 4 (Code 0021) p. 24
- Implant: Ø 5
Platform: 5 (Code 0021) p. 24

BIOTEC

- ✦ SPR/CIM
Implant: Ø 3,3
Platform: 3,3 (Code 0040) p. 25
- Implant: Ø 3,75
Platform: 3,75 (Code 0040) p. 25
- ✦ SPR/SPTT/CIM
Implant: Ø 4,2
Platform: 4,2 (Code 0040) p. 25
- Implant: Ø 5
Platform: 5 (Code 0040) p. 25

BTK

- ✦ Klassic / Konic
Implant: Ø 3,25/4
Platform: 3,5 IR (Code 0040) p. 25

B&W

- ✦ Internal Hexagon CIH
Implant: Ø 3,3/4
Platform: 4 (Code 0040) p. 25

CAMLOG

- ✦ Conelog Screw-Line
Implant: Ø 3,8
Platform: 3,8 (Code 0120) p. 27
- Implant: Ø 4,3
Platform: 4,3 (Code 0121) p. 27

CONEXÃO SISTEMA DE PRÓTESE

- ✦ Flash
Implant: Ø 3,5/4,3/5
Platform: Universal (Code 0021) p. 24
- ✦ Torq
Implant: Ø 3,5/3,75/4
Platform: Universal (Code 0021) p. 24
- ✦ Expand
Implant: Ø 3,75/4/5
Platform: Universal (Code 0021) p. 24

CORTEX

- ✦ Dynamix
Implant: Ø 3,3/3,8/4,2/5/6
Platform: 3,75 (Code 0040) p. 25
- ✦ Classix
Implant: Ø 3,3/3,8/4,2/5/6
Platform: 3,75 (Code 0040) p. 25
- ✦ Saturn
Implant: Ø 3,8/4,2
Platform: 3,5 (Code 0040) p. 25
- ✦ Conical Platform:
Implant: Ø 3,3/3,8/4,2
Platform: RP (Code 0004) p. 22
- ✦ Magix
Implant: Ø 3,3/3,8/4,2
Platform: RP (Code 0004) p. 22

DENTIS

✦ s-Clean

Implant: Ø 3,7
Platform: Mini (Code 0030) p. 24

Implant: Ø 4,1/4,3
Platform: Regular (Code 0030) p. 24

Implant: Ø 4,8
Platform: Wide (Code 0030) p. 24

DENTIUM

✦ SuperLine and Implantium

Implant: Ø 3,4
Platform: 3,6 (Code 0030) p. 24

Implant: Ø 3,8
Platform: 4 (Code 0030) p. 24

Implant: Ø 4,3
Platform: 4,5 (Code 0030) p. 24

Implant: Ø 4,8
Platform: 5 (Code 0030) p. 24

Implant: Ø 4,8
Platform: 6 (Code 0030) p. 24

DIO IMPLANTS

✦ UF II

Implant: Ø 3,8/4/4,5/5/5,5
Platform: Regular (Code 0030) p. 24

EASY IMPLANT

✦ Master C

Implant: Ø 3,5
Platform: 3,5 (Ocean) (Code 0004) p. 22

Implant: Ø 4
Platform: 4 (Ocean) (Code 0004) p. 22

Implant: Ø 4,5
Platform: 4,5 (Lilas) (Code 0030) p. 24

Implant: Ø 5
Platform: 5 (Lilas) (Code 0030) p. 24

✦ Master S

Implant: Ø 3,3
Platform: 3,3 (Ocean) (Code 0004) p. 22

Implant: Ø 3,75
Platform: 3,75 (Lilas) (Code 0030) p. 24

Implant: Ø 4,25
Platform: 4,25 (Lilas) (Code 0030) p. 24

Implant: Ø 4,75
Platform: 4,75 (Lilas) (Code 0030) p. 24

✦ Master L

Implant: Ø 3,3
Platform: 3,3 (Lilas) (Code 0030) p. 24

Implant: Ø 3,75
Platform: 3,75 (Lilas) (Code 0030) p. 24

Implant: Ø 4,25
Platform: 4,25 (Lilas) (Code 0030) p. 24

Implant: Ø 4,75
Platform: 4,75 (Lilas) (Code 0030) p. 24

EUROTEKNIKA

✦ Naturactis

Implant: Ø 3,5
Platform: 3,4 (Code 0004) p. 22

Implant: Ø 4
Platform: 3,8 (Code 0004) p. 22

Implant: Ø 4,5
Platform: 4,3 (Code 0004) p. 22

Implant: Ø 5
Platform: 4,8 (Code 0004) p. 22

✦ Natea

Implant: Ø 3,6/4,1/4,8
Platform: Narrow (Code 0004) p. 22

Implant: Ø 3,6/4,1/4,8
Platform: Regular (Code 0004) p. 22

Implant: Ø 6
Platform: Wide (Code 0004) p. 22

✦ Naturall

Implant: Ø 3,5
Platform: Narrow (Code 0004) p. 22

Implant: Ø 4/4,5
Platform: Regular (Code 0004) p. 22

Implant: Ø 5
Platform: Wide (Code 0004) p. 22

GALIMPLANT

✦ Internal Connection

Implant: Ø 3,5
Platform: 3,5 (Code 0004) p. 22

Implant: Ø 4
Platform: 4 (Code 0004) p. 22

Implant: Ø 5
Platform: 5 (Code 0004) p. 22

HAHN IMPLANT (GLIDEWELL)

✦ Hahn Tapered Implant

Implant: Ø 3,5/4,3
Platform: 3,5/4,3 (Code 0021) p. 24

Implant: Ø 5
Platform: 5 (Code 0022) p. 24

HI-TEC

✦ Tapered Self Thread

Implant: Ø 3,3/3,75
Platform: 3,5 (Code 0040) p. 25

✦ Logic Plus

Implant: Ø 3,5
Platform: 3,7 (Code 0040) p. 25

Implant: Ø 4,3
Platform: 3,9 (Code 0040) p. 25

HIOSSSEN

✦ ETTI SA/ETIII SA

Implant: Ø 4/4,5/5
Platform: Regular (Code 0030) p. 24

✦ ETTI BA

Implant: Ø 4/4,5/5
Platform: Regular (Code 0030) p. 24

IBS

✦ Magic FC

Implant: Ø 4/4,5/5/5,5/6/6,5
Platform: 3,8 (Code 0030) p. 24

✦ N.R Fix

Implant: Ø 3/3,5
Platform: 3,8 (Code 0030) p. 24

IDO IMPLANTS

✦ IDo Implant

Implant: Ø 3,8/4/4,5/5/5,5/6/7
Platform: Universal (Code 0030) p. 24

IHDE DENTAL (IMBIODENT)

✦ Bone Level Plus

Implant: Ø 3,3
Platform: 3,3 (Code 0033) p. 25

Implant: Ø 4,1
Platform: 4,1 (Code 0035) p. 25

Implant: Ø 4,8
Platform: 4,8 (Code 0035) p. 25

IMPLANT DIRECT

✦ Legacy

Implant: Ø 3,7/4,2
Platform: 3,5 (Code 0040) p. 25

✦ SwishActive

Implant: Ø 3,3
Platform: 3 (Code 0021) p. 24

Implant: Ø 4,1/4,8
Platform: 3,4 (Code 0022) p. 24

✦ Interactive

Implant: Ø 3,2/3,7
Platform: 3 (Code 0021) p. 24

Implant: Ø 4,3/5
Platform: 3,4 (Code 0022) p. 24

IMPLANT GENESIS

✦ Aktiv System

Implant: Ø 3,5/3,75/4,2/5
Platform: Standard (Code 0040) p. 25

INTRA-LOCK

✦ IntraHex

Implant: Ø 3,75/4
Platform: 3,5 (Code 0040) p. 25

JDENTALCARE

✦ JDEvolution/JDEvolution Plus

Implant: Ø 3,7
Platform: 3,7 (Code 0040) p. 25

Implant: Ø 4,3/5
Platform: 4 (Code 0040) p. 25

Implant: Ø 6
Platform: 5 (Code 0040) p. 25

✦ JD ICON

Implant: Ø 3,9
Platform: 3,9 (Code 0022) p. 24

Implant: Ø 4,3
Platform: 4 (Code 0022) p. 24

Implant: Ø 5
Platform: 4,7 (Code 0022) p. 24

LEADER

✦ Tixos Internal Hex

Implant: Ø 3,3
Platform: 3,5 (Code 0040) p. 25

Implant: Ø 3,75
Platform: 4 (Code 0040) p. 25

MEDENTIS

✦ ICX - Templant

Implant: Ø 3,75
Platform: 3,75 (Code 0125) p. 27

Implant: Ø 4,1
Platform: 4,1 (Code 0125) p. 27

Implant: Ø 4,8
Platform: 4,8 (Code 0125) p. 27

MEGAGEN

✦ AnyRidge

Implant: Ø 3,5
Platform: Small (Code 0015) p. 23

Implant: Ø 4/4,5
Platform: Regular (Code 0015) p. 23

Implant: Ø 5/5,5
Platform: Wide (Code 0015) p. 23

✦ AnyOne Internal

Implant: Ø 3,5/4/4,5/5/6/7
Platform: General (Code 0030) p. 24

MIS

✦ Seven

Implant: Ø 3,75/4,2
Platform: Standard (Code 0040) p. 25

✦ M4

Implant: Ø 3,75/4,2
Platform: Standard (Code 0040) p. 25

MOZO-GRAU

✦ MG Inhex

Implant: Ø 3,75/4,25
Platform: 2,8 Standard (Code 0004) p. 22

MPI

- ✦ Privilege CM
Implant: Ø 3,5/4
Platform: Regular (Code 0004) p. 22
- ✦ Excellence CM
Implant: Ø 3,5/4
Platform: Regular (Code 0004) p. 22

NEODENT

- ✦ Helix GM/Drive GM/ Titamax GM
Implant: Ø 3,5/3,75/4/4,3/5/6
Platform: Regular (Code 0186) p. 28

NEOBIO TECH

- ✦ IS Implant: System
Implant: Ø 4
Platform: Regular 4 (Code 0030) p. 24
- Implant: Ø 4,5
Platform: Regular 4,5 (Code 0030) p. 24
- Implant: Ø 5
Platform: Wide 5 (Code 0030) p. 24

NOBEL BIOCARE

- ✦ Active
Implant: Ø 3,5
Platform: Narrow (Code 0021) p. 24
- Implant: Ø 4,3/5
Platform: Regular (Code 0022) p. 24
- ✦ NobelParallel
Implant: Ø 3,75
Platform: Narrow (Code 0021) p. 24
- Implant: Ø 4,3/5
Platform: Regular (Code 0022) p. 24

NORIS MEDICAL

- ✦ Tuff
Implant: Ø 3,3/3,75/4,2/5/6
Platform: 3,75 (Code 0040) p. 25
- ✦ Tuff TT
Implant: Ø 3,3/3,75/4,2/5/6
Platform: 3,75 (Code 0040) p. 25
- ✦ Onix
Implant: Ø 3,3/3,75/4,2/5/6
Platform: 3,75 (Code 0040) p. 25
- ✦ Cortical
Implant: Ø 4,0/5/6
Platform: 3,75 (Code 0040) p. 25
- ✦ PteryCore
Implant: Ø 4,2
Platform: 3,75 (Code 0040) p. 25
- ✦ PteryFit
Implant: Ø 4,2
Platform: 3,75 (Code 0040) p. 25

OSTEOPLUS

- ✦ Shi
Implant: Ø 3,3 / 3,75 / 4,2
Platform: 3,5 (Code 0040) p. 25

OSSTEM IMPLANT

- ✦ TS
Implant: Ø 4/4,5/5/6/7
Platform: Regular (Code 0030) p. 24

PROCLINIC

- ✦ Aqua CM
Implant: Ø 3,5/4/5
Platform: 2,82 (Code 0004) p. 22
- ✦ Cylindrical Internal/Conical Internal
Implant: Ø 3,3/3,75/4,25/5//3,5/4/5
Platform: 3,5 (Code 0040) p. 25

SEWON MEDIX

- ✦ IH2 SLA SYSTEM
Implant: Ø 3,5/4/4,5/5
Platform: Regular (Code 0030) p. 24
- ✦ IH2 RBM SYSTEM
Implant: Ø 3,5/4/4,5/5
Platform: Regular (Code 0030) p. 24

SGS

- ✦ P1
Implant: Ø 3,2/3,75/4,2/5/6
Platform: 3,75 (Code 0040) p. 25
- ✦ P7
Implant: Ø 3,2/3,75/4,2/4,5/5/6
Platform: 3,75 (Code 0040) p. 25

SIGNO VINCES

- ✦ Compact
Implant: Ø 4,5
Platform: CM3,8 (Code 0004) p. 22
- ✦ Duocon
Implant: Ø 3,8
Platform: CM3,8 (Code 0004) p. 22
- ✦ Infra
Implant: Ø 3,3/3,8/4,6
Platform: CM (Code 0004) p. 22

SOUTHERN IMPLANTS

- ✦ Deep Conical
Implant: Ø 3,5/4
Platform: 2,95/3,1 (Code 0004) p. 22
- ✦ Internal Hex
Implant: Ø 3,75/4,2/5
Platform: Universal (Code 0040) p. 25

STRAUMANN

- ✦ Bone Level
Implant: Ø 3,3
Platform: NC- 3,3 (Code 0033) p. 25
- Implant: Ø 4,1
Platform: RC-4,1 (Code 0035) p. 25
- Implant: Ø 4,8
Platform: RC-4,8 (Code 0035) p. 25
- ✦ BLX
Implant: Ø 3,5/3,75/4/4,5
Platform: RB (Regular Base) (Code 0207) p. 28

TITANIUM-FIX

- ✦ b-fix
Implant: Ø 3,5/4
Platform: Regular (Code 0004) p. 22

TRE-OSS

- ✦ Simple
Implant: Ø 3,3/3,75/5
Platform: 3,75 Amarillo (Code 0040) p. 25

TRI DENTAL IMPLANTS

- ✦ TRI-Vent
Implant: Ø 3,75/4,1/4,7
Platform: 3,5 (Code 0040) p. 25

UFIT

- ✦ Gt2
Implant: Ø 3,5
Platform: Mini (Code 0004) p. 22
- ✦ Nt2
Implant: Ø 3,5
Platform: Mini (Code 0004) p. 22

VULKAN IMPLANTS

- ✦ IN-Hex
Implant: Ø 3,3/3,75/4,2/5
Platform: 3,75 (Code 0040) p. 25

YES IMPLANT

- ✦ S-SYSTEM
Implant: Ø 3,3/3,5
Platform: Narrow (Code 0030) p. 24
- Implant: Ø 4/4,5
Platform: Regular (Code 0030) p. 24
- Implant: Ø 5/5,5
Platform: Wide (Code 0030) p. 24

ZIMMER

- ✦ Screw-Vent
Implant: Ø 3,7/4,1
Platform: 3,5 (Code 0040) p. 25

COMPATIBLE with 0001

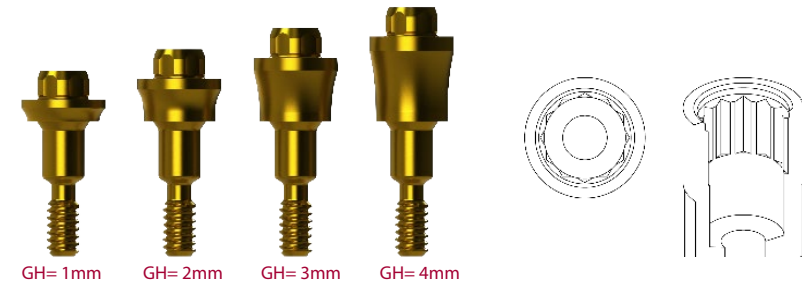
MULTI-UNIT				
	GINGIVAL HEIGHT	GINGIVAL HEIGHT	GINGIVAL HEIGHT	GINGIVAL HEIGHT
	1 mm	2 mm	3 mm	4 mm
R	42.302.001.01-2	42.302.001.02-2	42.302.001.03-2	42.302.001.04-2

DAS LIBRARIES:

MU SCANBODY DAS_MU_4.5_0001_PREMIUM
DAS_MU_8_0001_PREMIUM

MU SCANALOG DAS_MU_SA_0001_PREMIUM

DYNAMIC μSCANBODY DAS_MU_I/IG_0001_PREMIUM



GH= 1mm GH= 2mm GH= 3mm GH= 4mm

COMPATIBLE with 0002

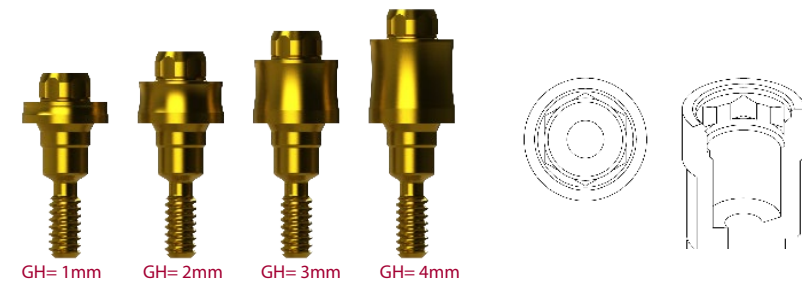
MULTI-UNIT				
	GINGIVAL HEIGHT	GINGIVAL HEIGHT	GINGIVAL HEIGHT	GINGIVAL HEIGHT
	1 mm	2 mm	3 mm	4 mm
R	42.303.002.01-2	42.303.002.02-2	42.303.002.03-2	42.303.002.04-2

DAS LIBRARIES:

MU SCANBODY DAS_MU_4.5_0002_PREMIUM
DAS_MU_8_0002_PREMIUM

MU SCANALOG DAS_MU_SA_0002_PREMIUM

DYNAMIC μSCANBODY DAS_MU_I/IG_0002_PREMIUM



GH= 1mm GH= 2mm GH= 3mm GH= 4mm

COMPATIBLE with 0004

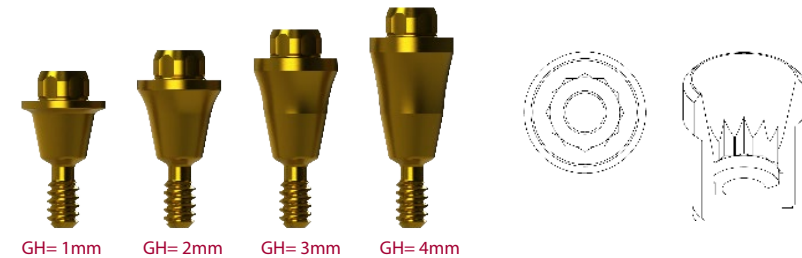
MULTI-UNIT				
	GINGIVAL HEIGHT	GINGIVAL HEIGHT	GINGIVAL HEIGHT	GINGIVAL HEIGHT
	1 mm	2 mm	3 mm	4 mm
R	42.303.004.01-2	42.303.004.02-2	42.303.004.03-2	42.303.004.04-2

DAS LIBRARIES:

MU SCANBODY DAS_MU_4.5_0004_PREMIUM
DAS_MU_8_0004_PREMIUM

MU SCANALOG DAS_MU_SA_0004_PREMIUM

DYNAMIC μSCANBODY DAS_MU_I/IG_0004_PREMIUM



GH= 1mm GH= 2mm GH= 3mm GH= 4mm

COMPATIBLE with 0006

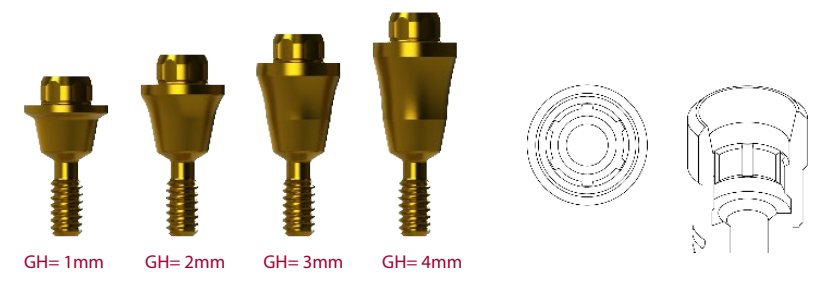
MULTI-UNIT				
	GINGIVAL HEIGHT	GINGIVAL HEIGHT	GINGIVAL HEIGHT	GINGIVAL HEIGHT
	1 mm	2 mm	3 mm	4 mm
R	42.302.006.01-2	42.302.006.02-2	42.302.006.03-2	42.302.006.04-2

DAS LIBRARIES:

MU SCANBODY DAS_MU_4.5_0006_PREMIUM
DAS_MU_8_0006_PREMIUM

MU SCANALOG DAS_MU_SA_0006_PREMIUM

DYNAMIC μSCANBODY DAS_MU_I/IG_0006_PREMIUM



GH= 1mm GH= 2mm GH= 3mm GH= 4mm

COMPATIBLE with 0007

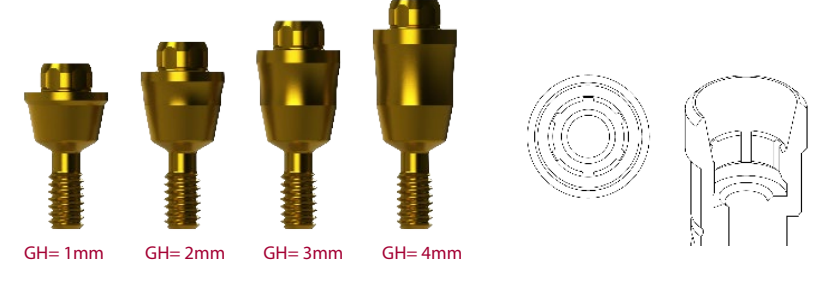
MULTI-UNIT				
	GINGIVAL HEIGHT	GINGIVAL HEIGHT	GINGIVAL HEIGHT	GINGIVAL HEIGHT
	1 mm	2 mm	3 mm	4 mm
R	42.303.007.01-2	42.303.007.02-2	42.303.007.03-2	42.303.007.04-2

DAS LIBRARIES:

MU SCANBODY DAS_MU_4.5_0007_PREMIUM
DAS_MU_8_0007_PREMIUM

MU SCANALOG DAS_MU_SA_0007_PREMIUM

DYNAMIC μSCANBODY DAS_MU_I/IG_0007_PREMIUM



GH= 1mm GH= 2mm GH= 3mm GH= 4mm

COMPATIBLE with 0015

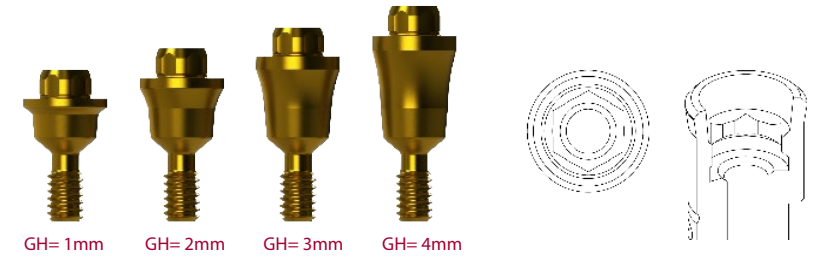
MULTI-UNIT				
	GINGIVAL HEIGHT	GINGIVAL HEIGHT	GINGIVAL HEIGHT	GINGIVAL HEIGHT
	1 mm	2 mm	3 mm	4 mm
R	42.303.015.01-2	42.303.015.02-2	42.303.015.03-2	42.303.015.04-2

DAS LIBRARIES:

MU SCANBODY DAS_MU_4.5_0015_PREMIUM
DAS_MU_8_0015_PREMIUM

MU SCANALOG DAS_MU_SA_0015_PREMIUM

DYNAMIC μSCANBODY DAS_MU_I/IG_0015_PREMIUM



GH= 1mm GH= 2mm GH= 3mm GH= 4mm

COMPATIBLE with 0021

MULTI-UNIT				
	GINGIVAL HEIGHT	GINGIVAL HEIGHT	GINGIVAL HEIGHT	GINGIVAL HEIGHT
	1 mm	2 mm	3 mm	4 mm
R	42.302.021.01-2	42.302.021.02-2	42.302.021.03-2	42.302.021.04-2

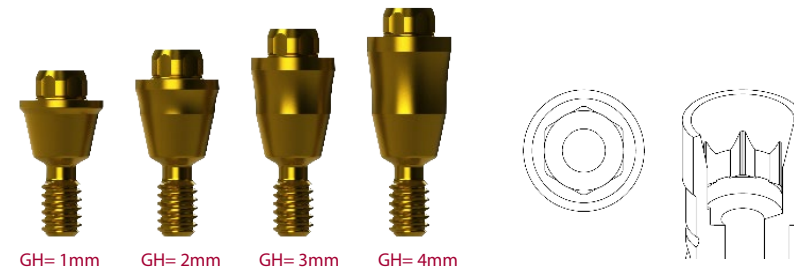
DAS LIBRARIES:

MU SCANBODY MU SCANBODY DAS_MU_4.5_0021_PREMIUM

DAS_MU_8_0021_PREMIUM

MU SCANALOG DAS_MU_SA_0021_PREMIUM

DYNAMIC μSCANBODY DAS_MU_I/IG_0021_PREMIUM



GH= 1mm GH= 2mm GH= 3mm GH= 4mm

COMPATIBLE with 0022

MULTI-UNIT				
	GINGIVAL HEIGHT	GINGIVAL HEIGHT	GINGIVAL HEIGHT	GINGIVAL HEIGHT
	1 mm	2 mm	3 mm	4 mm
R	42.303.022.01-2	42.303.022.02-2	42.303.022.03-2	42.303.022.04-2

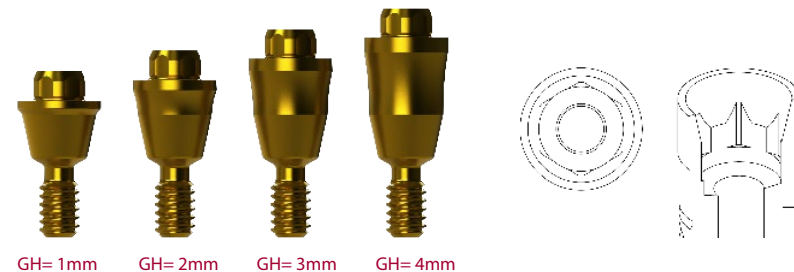
DAS LIBRARIES:

MU SCANBODY DAS_MU_4.5_0022_PREMIUM

DAS_MU_8_0022_PREMIUM

MU SCANALOG DAS_MU_SA_0022_PREMIUM

DYNAMIC μSCANBODY DAS_MU_I/IG_0022_PREMIUM



GH= 1mm GH= 2mm GH= 3mm GH= 4mm

COMPATIBLE with 0030

MULTI-UNIT				
	GINGIVAL HEIGHT	GINGIVAL HEIGHT	GINGIVAL HEIGHT	GINGIVAL HEIGHT
	1 mm	2 mm	3 mm	4 mm
R	42.303.030.01-2	42.303.030.02-2	42.303.030.03-2	42.303.030.04-2

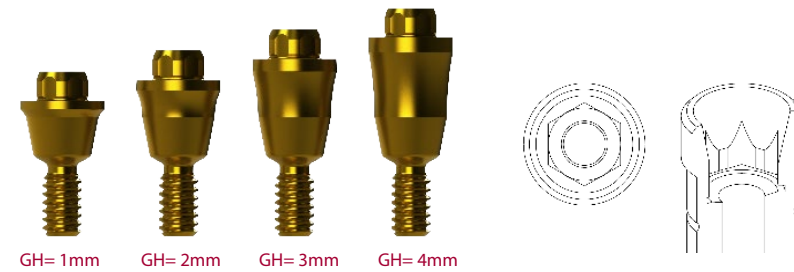
DAS LIBRARIES:

MU SCANBODY DAS_MU_4.5_0030_PREMIUM

DAS_MU_8_0030_PREMIUM

MU SCANALOG DAS_MU_SA_0030_PREMIUM

DYNAMIC μSCANBODY DAS_MU_I/IG_0030_PREMIUM



GH= 1mm GH= 2mm GH= 3mm GH= 4mm

COMPATIBLE with 0033

MULTI-UNIT				
	GINGIVAL HEIGHT	GINGIVAL HEIGHT	GINGIVAL HEIGHT	GINGIVAL HEIGHT
	1 mm	2 mm	3 mm	4 mm
R	42.302.033.01-2	42.302.033.02-2	42.302.033.03-2	42.302.033.04-2

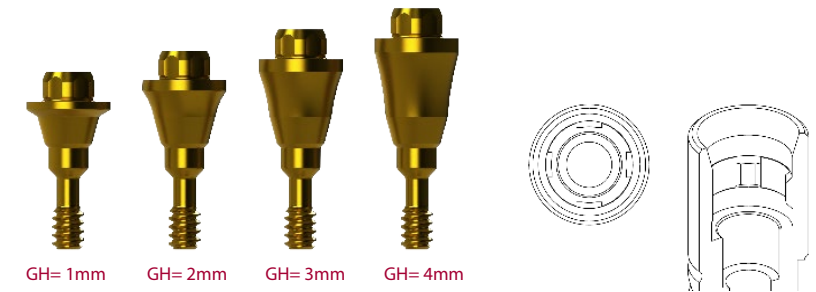
DAS LIBRARIES:

MU SCANBODY DAS_MU_4.5_0033_PREMIUM

DAS_MU_8_0033_PREMIUM

MU SCANALOG DAS_MU_SA_0033_PREMIUM

DYNAMIC μSCANBODY DAS_MU_I/IG_0033_PREMIUM



GH= 1mm GH= 2mm GH= 3mm GH= 4mm

COMPATIBLE with 0035

MULTI-UNIT				
	GINGIVAL HEIGHT	GINGIVAL HEIGHT	GINGIVAL HEIGHT	GINGIVAL HEIGHT
	1 mm	2 mm	3 mm	4 mm
R	42.303.035.01-2	42.303.035.02-2	42.303.035.03-2	42.303.035.04-2

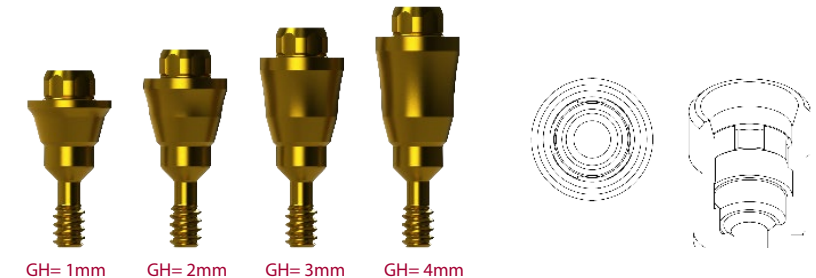
DAS LIBRARIES:

MU SCANBODY MU SCANBODY DAS_MU_4.5_0035_PREMIUM

DAS_MU_8_0035_PREMIUM

MU SCANALOG DAS_MU_SA_0035_PREMIUM

DYNAMIC μSCANBODY DAS_MU_I/IG_0035_PREMIUM



GH= 1mm GH= 2mm GH= 3mm GH= 4mm

COMPATIBLE with 0040

MULTI-UNIT				
	GINGIVAL HEIGHT	GINGIVAL HEIGHT	GINGIVAL HEIGHT	GINGIVAL HEIGHT
	1 mm	2 mm	3 mm	4 mm
R	42.302.040.01-2	42.302.040.02-2	42.302.040.03-2	42.302.040.04-2

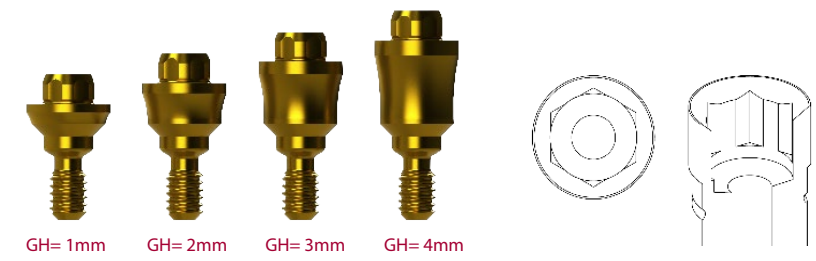
DAS LIBRARIES:

MU SCANBODY MU SCANBODY DAS_MU_4.5_0040_PREMIUM

DAS_MU_8_0040_PREMIUM

MU SCANALOG DAS_MU_SA_0040_PREMIUM

DYNAMIC μSCANBODY DAS_MU_I/IG_0040_PREMIUM

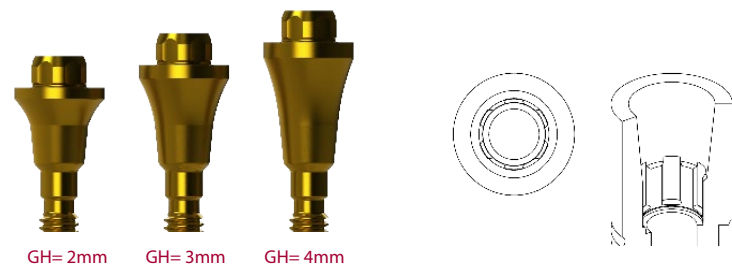


GH= 1mm GH= 2mm GH= 3mm GH= 4mm

COMPATIBLE with 0075

MULTI-UNIT				
	GINGIVAL HEIGHT	GINGIVAL HEIGHT	GINGIVAL HEIGHT	GINGIVAL HEIGHT
	1 mm	2 mm	3 mm	4 mm
R	-	42.302.075.02-2	42.302.075.03-2	42.302.075.04-2

DAS LIBRARIES:
 MU SCANBODY DAS_MU_4.5_0075_PREMIUM
 DAS_MU_8_0075_PREMIUM
 MU SCANALOG DAS_MU_SA_0075_PREMIUM
 DYNAMIC μSCANBODY DAS_MU_I/IG_0075_PREMIUM

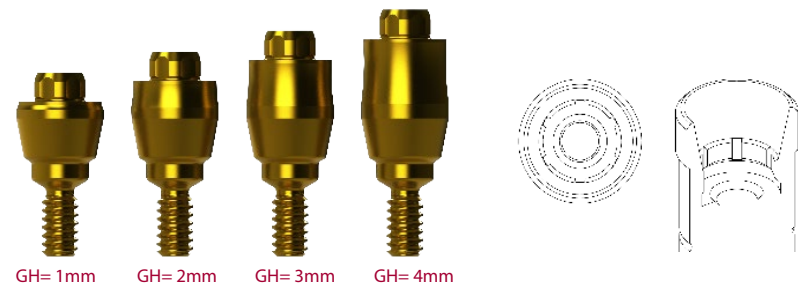


GH= 2mm GH= 3mm GH= 4mm

COMPATIBLE with 0091

MULTI-UNIT				
	GINGIVAL HEIGHT	GINGIVAL HEIGHT	GINGIVAL HEIGHT	GINGIVAL HEIGHT
	1 mm	2 mm	3 mm	4 mm
R	42.303.091.01-2	42.303.091.02-2	42.303.091.03-2	42.303.091.04-2

DAS LIBRARIES:
 MU SCANBODY DAS_MU_4.5_0091_PREMIUM
 DAS_MU_8_0091_PREMIUM
 MU SCANALOG DAS_MU_SA_0091_PREMIUM
 DYNAMIC μSCANBODY DAS_MU_I/IG_0091_PREMIUM

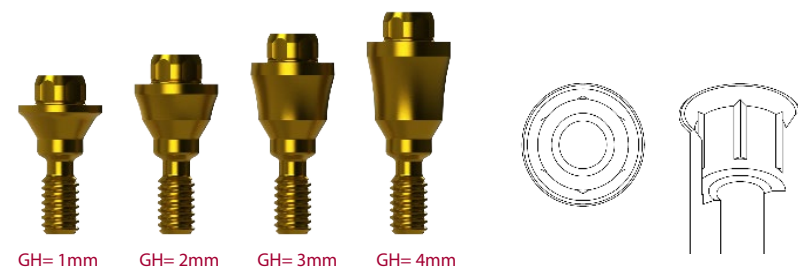


GH= 1mm GH= 2mm GH= 3mm GH= 4mm

COMPATIBLE with 0102

MULTI-UNIT				
	GINGIVAL HEIGHT	GINGIVAL HEIGHT	GINGIVAL HEIGHT	GINGIVAL HEIGHT
	1 mm	2 mm	3 mm	4 mm
R	42.302.102.01-2	42.302.102.02-2	42.302.102.03-2	42.302.102.04-2

DAS LIBRARIES:
 MU SCANBODY DAS_MU_4.5_0102_PREMIUM
 DAS_MU_8_0102_PREMIUM
 MU SCANALOG DAS_MU_SA_0102_PREMIUM
 DYNAMIC μSCANBODY DAS_MU_I/IG_0102_PREMIUM



GH= 1mm GH= 2mm GH= 3mm GH= 4mm

COMPATIBLE with 0120

MULTI-UNIT				
	GINGIVAL HEIGHT	GINGIVAL HEIGHT	GINGIVAL HEIGHT	GINGIVAL HEIGHT
	1 mm	2 mm	3 mm	4 mm
R	42.303.121.01-2	42.303.121.02-2	42.303.121.03-2	42.303.121.04-2

DAS LIBRARIES:
 MU SCANBODY DAS_MU_4.5_0120_PREMIUM
 DAS_MU_8_0120_PREMIUM
 MU SCANALOG DAS_MU_SA_0120_PREMIUM
 DYNAMIC μSCANBODY DAS_MU_I/IG_0120_PREMIUM



GH= 1mm GH= 2mm GH= 3mm GH= 4mm

COMPATIBLE with 0121

MULTI-UNIT				
	GINGIVAL HEIGHT	GINGIVAL HEIGHT	GINGIVAL HEIGHT	GINGIVAL HEIGHT
	1 mm	2 mm	3 mm	4 mm
R	42.303.121.01-2	42.303.121.02-2	42.303.121.03-2	42.303.121.04-2

DAS LIBRARIES:
 MU SCANBODY DAS_MU_4.5_0121_PREMIUM
 DAS_MU_8_0121_PREMIUM
 MU SCANALOG DAS_MU_SA_0121_PREMIUM
 DYNAMIC μSCANBODY DAS_MU_I/IG_0121_PREMIUM



GH= 1mm GH= 2mm GH= 3mm GH= 4mm

COMPATIBLE with 0125

MULTI-UNIT				
	GINGIVAL HEIGHT	GINGIVAL HEIGHT	GINGIVAL HEIGHT	GINGIVAL HEIGHT
	1 mm	2 mm	3 mm	4 mm
R	42.303.125.01-2	42.303.125.02-2	42.303.125.03-2	42.303.125.04-2

DAS LIBRARIES:
 MU SCANBODY DAS_MU_4.5_0125_PREMIUM
 DAS_MU_8_0125_PREMIUM
 MU SCANALOG DAS_MU_SA_0125_PREMIUM
 DYNAMIC μSCANBODY DAS_MU_I/IG_0125_PREMIUM



GH= 1mm GH= 2mm GH= 3mm GH= 4mm

COMPATIBLE with 0186

MULTI-UNIT				
	GINGIVAL HEIGHT	GINGIVAL HEIGHT	GINGIVAL HEIGHT	GINGIVAL HEIGHT
	1 mm	2 mm	3 mm	4 mm
R	42.303.186.01-2	42.303.186.02-2	42.303.186.03-2	42.303.186.04-2

DAS LIBRARIES:

MU SCANBODY DAS_MU_4.5_0186_PREMIUM
DAS_MU_8_0186_PREMIUM

MU SCANALOG DAS_MU_SA_0186_PREMIUM

DYNAMIC μSCANBODY DAS_MU_I/IG_0186_PREMIUM



GH= 1mm GH= 2mm GH= 3mm GH= 4mm

COMPATIBLE with 0169

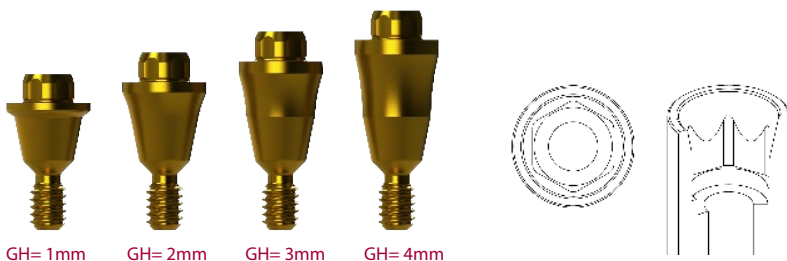
MULTI-UNIT				
	GINGIVAL HEIGHT	GINGIVAL HEIGHT	GINGIVAL HEIGHT	GINGIVAL HEIGHT
	1 mm	2 mm	3 mm	4 mm
R	42.302.169.01-2	42.302.169.02-2	42.302.169.03-2	42.302.169.04-2

DAS LIBRARIES:

MU SCANBODY DAS_MU_0169_PREMIUM

MU SCANALOG DAS_MU_SA_0169_PREMIUM

DYNAMIC μSCANBODY DAS_MU_I/IG_0169_PREMIUM



GH= 1mm GH= 2mm GH= 3mm GH= 4mm

COMPATIBLE with 0207

MULTI-UNIT				
	GINGIVAL HEIGHT	GINGIVAL HEIGHT	GINGIVAL HEIGHT	GINGIVAL HEIGHT
	1 mm	2 mm	3 mm	4 mm
R	42.302.207.01-2	42.302.207.02-2	42.302.207.03-2	42.302.207.04-2

DAS LIBRARIES:

MU SCANBODY DAS_MU_0207_PREMIUM

MU SCANALOG DAS_MU_SA_0207_PREMIUM

DYNAMIC μSCANBODY DAS_MU_I/IG_0207_PREMIUM



GH= 1mm GH= 2mm GH= 3mm GH= 4mm

TALLADIUM GUARANTEE

TERMS AND CONDITIONS

These guarantee terms and conditions ("T&C") cover the entire range of Talladium products ("Products"), manufactured by TALLADIUM ESPAÑA S.L. and distributed by Geoda Medical S.L. or official dealers. The guarantee described in these T&C is exclusively in benefit of the clinician ("Clinician") and of the dental technician ("Technician") and not for the benefit of third parties or institutions, including patients.

GUARANTEE PERIOD

TALLADIUM ESPAÑA S.L. offers a lifelong guarantee for its entire range of products starting from the date of issue of the invoice.

GUARANTEE SCOPE

Subject to the limitations and exceptions described in these T&C, TALLADIUM ESPAÑA S.L. will offer the following benefits:

QUALITY: If there are defects in the materials or in the manufacturing of the Product, TALLADIUM ESPAÑA S.L. will replace the Product with no additional cost.

SAFETY: If, having complied with all the product indications, the prosthesis should have to be made again, due to a fault in the Dynamic Abutment® or Dynamic Titanium Base® system, TALLADIUM ESPAÑA S.L. will replace the abutments and screws necessary to remake the prosthesis, as well as the costs derived from its manufacturing.

In case of having used our products and having complied with all the product indications, the implants suffer any damage, TALLADIUM ESPAÑA S.L. will pay the cost of the implants. This coverage will only be valid during the first 6 months after the collocation of the prosthesis which includes our products.

CLAIM REQUIREMENTS AND PROCEDURE

To receive the benefits indicated in these T&C, the treating Clinician must satisfy the following requirements:

- The claim must be notified to TALLADIUM ESPAÑA S.L. within (30) days since the date the claimed defect was detected.
- This requires that the Clinician or Technician must contact the customer service department by telephone or by e-mail to make the claim.
- A claim form will be completed, which, together with a document or report which justifies the faulty Product and the faulty Product itself, will be sent by the customer to TALLADIUM ESPAÑA S.L. offices, within the previously indicated period.
- Clinicians or Technicians presenting a claim in agreement with these T&C must be up to date in any payments owing to TALLADIUM ESPAÑA S.L. or to any of its subsidiaries, at the time when the claim form is presented.
- All the use procedures of our Products must be carried out in agreement with the instructions of TALLADIUM ESPAÑA S.L. as well as in accordance with commonly accepted dentistry practices.
- The expenses derived from this procedure will be assumed by the customer. The return shipping costs will be assumed by TALLADIUM ESPAÑA S.L. in all those cases covered by these T&C.

Regardless of the guarantee rights, claims should be notified as soon as possible in order to comply with regulatory requirements.

GENERAL LIMITATIONS OF THIS GUARANTEE

With the exception of the guarantee described in these T&C, neither TALLADIUM ESPAÑA S.L. nor its representatives, nor third parties manufacturing or distributing the Products, represent or offer a guarantee, agreement or any other express or implicit, oral or written, commitment, with respect to the Products (without limitation), including guarantees involved in the marketing, durability or suitability for individual uses or purposes.

In addition and within the maximum extent permitted by the relative law, TALLADIUM ESPAÑA S.L. rejects (on its own behalf, and on behalf of its representatives and third parties that manufacture or distribute Products) any responsibility with respect to any direct or indirect damage caused, which may result from or be a consequence of the design, composition of the dental prosthesis into which the Products are integrated.

GUARANTEE EXCLUSIONS

TALLADIUM ESPAÑA S.L. limits this guarantee to:

- Transformed abutments that form part of the dental prosthesis. But not the screws used to anchor them.
- Clinical screws that have been in the mouth for more than 2 years.

AMENDMENT OR SUSPENSION OF THE GUARANTEE

TALLADIUM ESPAÑA S.L. reserves the right to amend or withdraw these T&C at any time and without prior notification. Any modification or suspension shall not affect products already placed in patients.



DYNAMIC ABUTMENT® SOLUTIONS

VIRGINIA WOOLF, 17 · 25005 · LLEIDA (SPAIN)

INTERNATIONAL +34 873 450 709

das@dynamicabutment.com

SPAIN +34 973 289 580

spain@dynamicabutment.com

Dynamic Abutment® Solutions is a trademark of the manufacturer Talladium España S.L

The information included in this catalogue is exclusively addressed to professionals in dental sector.

All commercial trademarks mentioned herein are fully registered by their respective companies, and the images that appear are just to provide an orientation.

Talladium reserves the right to modify this document without previous notice.

Talladium is not responsible for the inadequate execution of these products if the warning indications corresponding to every reference are not contemplated.

All of the products listed in this brochure are marking in accordance with CE legislation. Some of the products are not authorized for sale and distribution or do not have a sales license in some countries according to other legislations (FDA, MDSAP, etc.) Please ask for information: das@dynamicabutment.com

 *Marking in accordance with CE legislation and applicable sanitary regulations*



Visit our Online Store to find all our products and compatibilities :

www.dynamicabutmentstore.com



DYNAMIC ABUTMENT® SOLUTIONS

Virginia Woolf, 17

25005 · Lleida · Spain

www.dynamicabutment.com

INTERNATIONAL +34 873 450 709

das@dynamicabutment.com

SPAIN +34 973 289 580

spain@dynamicabutment.com

DYNAMIC ABUTMENT® SOLUTIONS