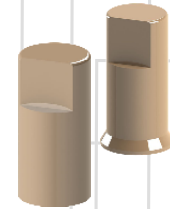


DYNAMIC
ABUTMENT®
SOLUTIONS

CADCAM EXTRAORAL SOLUTIONS




**Angulated
Technology**
DYNAMIC ABUTMENT SOLUTIONS



DYNAMIC ABUTMENT® SOLUTIONS

AV. BLONDEL, 54 3º · 25002 · LLEIDA (SPAIN)
TEL. +34 973 289 580
das@dynamicabutment.com
www.dynamicabutment.com

The information included in this catalogue is exclusively addressed to professionals in dental sector.

 Approval of total quality system assurance by notified body, according to Community legislation, for sterile and medical devices Class IIB.
Class IIB includes: screws, Dynamic Titanium Bases.



Visit our Online Store to find all our products and compatibilities :

www.dynamicabutmentstore.com

INDEX

5	<i>LIST OF 3.0 DYNAMIC TIBASE® COMPATIBILITIES</i>
6	<i>RESEARCH & DEVELOPMENT</i>
7	<i>QUALITY CENTER & INTERNATIONAL CUSTOMER SERVICE</i>
8	<i>DYNAMIC SYSTEM FOR MILLING STRUCTURES</i>
10	<i>3.0 DYNAMIC TI-BASE®</i>
12	<i>3.0 DYNAMIC TI-BASE® CAD-CAM & CAD LIBRARY ADJUSTMENTS</i>
14	<i>SCANBODY PEEK FOR 3.0 DYNAMIC TI-BASE®</i>
16	<i>SCANNING PROCESS</i>
18	<i>SECURITY & TRACEABILITY</i>
20	<i>3.0 DYNAMIC TI-BASE® COMPATIBILITES</i>
70	<i>DYNAMIC SCREWS & DYNAMIC SCREWDRIVER / STRAIGHT SCREWS & SCREWDRIVERS</i>
71	<i>COMPLEMENTS / ANALOGS</i>
72	<i>DYNAMIC SCREWS TECHNICAL SPECIFICATIONS</i>
74	<i>STRAIGHT SCREWS TECHNICAL SPECIFICATIONS</i>
76	<i>TALLADIUM GUARANTEE</i>



Dynamic Tibase®

List of 3.0 DYNAMIC TI-BASE® compatibilities

AB	20	CORTEX	37	MPI	54
ACE	21	DENTALTECH	37	NEOBIOTECH	55
ADIN	22	DENTIS	38	NEODENT	56
ALPHABIO	24	DENTIUM	39	NEOSS	56
ANCLADEN	25	DIO IMPLANTS	40	NOBEL BIO CARE	57
ANTHOGRYR	25	DSP BIOMEDICAL	41	NORMON	58
ARDS	25	ECKERMAN	41	OSSEOLIFE (ZIACOM)	58
ASTRA	26	ELITE MEDICAL	41	OSSTEM IMPLANT	59
AVINENT	27	EUROTEKNIKA	42	OSTEOPLUS	60
BEGO	28	GALIMPLANT	44	PHIBO	60
BIOGENESIS	29	GMI (ILERIMPLANT)	44	PROCLINIC	61
BIOHORIZON	30	GT MEDICAL	45	RADHEX	62
BIOMET 3I	31	HI-TECH	45	SGS	62
BIOLOK	32	IHDE DENTAL (IMBIODENT)	46	SIGNO VINCES	63
BIONER	32	IMPLANT DIRECT	47	SOUTHERN IMPLANTS	64
BIOTEC	33	JDENTALCARE	48	STRAUMANN	65
BTI	34	KEYSTONE	48	SYBRON IMPLANTS SOLUTIONS	66
BTK	35	KLOCKNER	49	TITANIUM-FIX	66
B&W	35	LEADER	49	TRI DENTAL IMPLANTS	67
CAMLOG	36	MEDENTIS	50	TRINON	67
CONEXÃO SISTEMA DE PRÓTESE	36	MEGAGEN	51	XIVE	68
		MICRODENT	52	ZIMMER	69
		MIS	53		
		MOZO GRAU	54		

Research & Development

Always ready to be trendsetters

Our main purpose is to keep leading the way in angled systems, that is why our research and innovation in prosthetic solutions are our hallmarks.

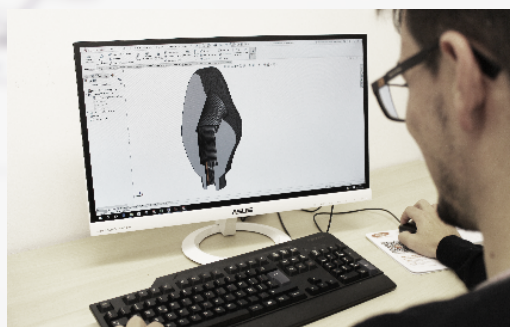
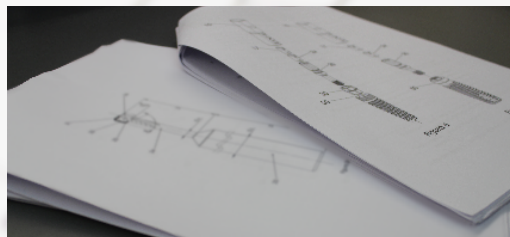
The proximity to professional needs and the innovative philosophy of our brand allow our technical team to be at the cutting edge of the sector. When developing the product, we give priority to product output, ease of use and improvement in terms of the aesthetic result.

Research and development of new products have been our main objectives. This enabled us to create innovative projects responding to sector needs.

The result (in the shape of numerous patents presented by our R&D&I Department) has been new products launched onto the market, fruit of work done in our R&D&I department and a good working relationship with the best people and leading companies in the sector that, like Dynamic Abutment® Solutions, champion research and development.

Dynamic Abutment Solutions: always ready to be trendsetters. That is why we have started our **Production Center**: our own production center which allows us to rapidly create prototypes for new products and undertake applied research into new technologies.

The UNE-166002 certified R&D&I Centre ensures an exhaustive control of all the developmental stages for new projects. This enables these projects to turn into new products to the benefit of our clients as rapidly as possible and under the highest levels of safety and quality.



Quality Center

Dynamic Abutment® Solutions features significant resources to ensure our clients receive products in the very best quality and safety guaranteed.

It has the latest marking, control and measurement equipment, in addition to specific features to effect physical-chemical treatments on our products .

Our presence in international markets means we have the mandatory healthcare certificates supporting our medical devices: CE marking, CMD/CAS standards and FDA certificates.

One of our primary commitments is the guarantee that the devices which we make available to our clients fully meet all healthcare regulations.

Our primary concern from the very beginning has been the quality and safety of our products: UNE-EN ISO 9001:2015 , UNE-EN ISO 13485:2016, and UNE 166002:2014



The Quality Center has an ISO-8 clean room



Quality Management System



Medical devices



Health Canada Certified

International Customer Service

At Dynamic Abutment® Solutions we are very proud to offer an excellent customer service. Our aim is to establish constant communication with our international distributors and partners. We offer instant replies and solutions, answers to your queries, and provide technical advice for more complex cases.

Our international department also offers support to register our products in other countries.

Direct contact with and suggestions from our clients allow us to continuously improving the quality of the products and services we offer on a daily basis.



Participation in events, exhibitions and trainings



Dynamic System for milling structures

more than
100.000 cases
resolved by
Dynamic System

The Screwdriver set of 3.0 Dynamic Abutment® System is used in those cases in which rectification of the entry of the screw due to an unfavorable position of the implants is necessary, improving the functionality and aesthetics of the milled prosthesis.

Dynamic Screwdriver

Screwdriver with hexalobular head, exclusively to the 3.0 Dynamic Abutment® system; lengths: 18, 24, 32mm.

Our screwdriver has a contra-angle connection to make it easier to use with a dynamometer or manual ratchet, with the corresponding adaptors or handles.

Dynamic Screws

They cover all the tread metrics available on the market. They are used with the 3.0 Dynamic Abutment®, the 3.0 Dynamic TiBase® or milled structures with an angled screw channel of up to 30°. There are several lengths for each metric to ease adaptation to the structures. All of them are made of grade 5 titanium

All screws are perfectly identified with their batch and reference numbers, which allow each and every screw to be traced and recorded in the patient's card and in the clinical or laboratory records. Only the 3.0 dynamic screwdriver must be used to fix them.

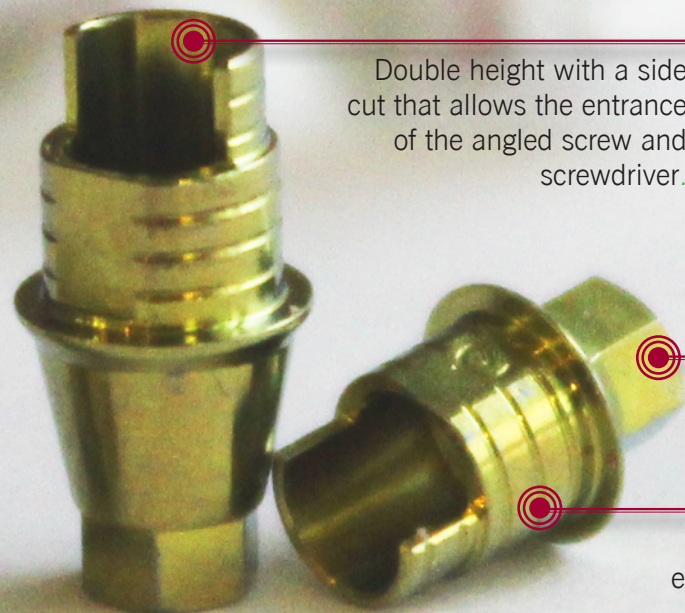


Dynamic Tibase®

Dynamic TiBases® are a technological contribution to the digital treatment for the angled systems development using CAD/CAM: the Dynamic system includes the Dynamic TiBase®, the dynamic screw-screwdriver set, scanbodies and digital libraries available for the main CAD softwares on the market: Exocad, 3Shape, Dentalwings and EGS.

To correct angulation up to 30°

Our grade 5 titanium bases are **gold anodized** to improve the work's aesthetic.

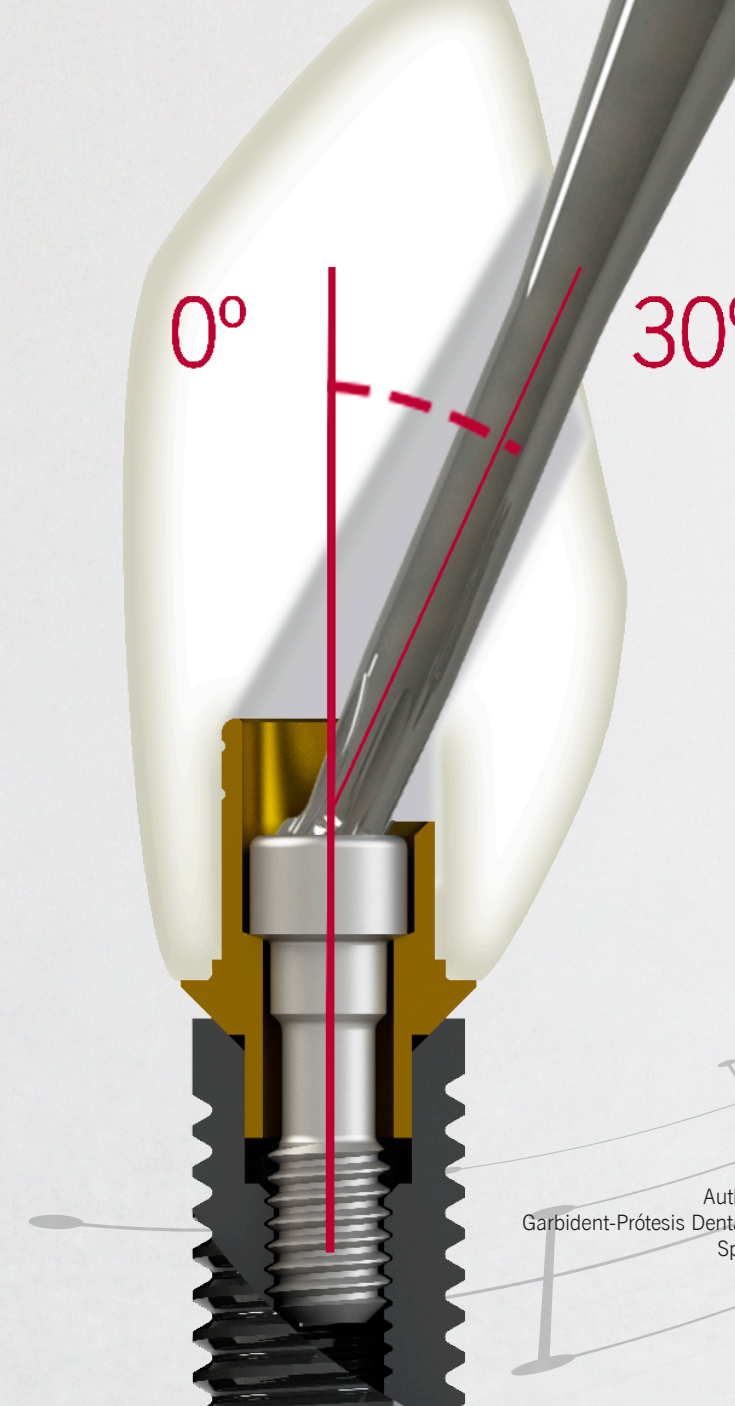


Double height with a side cut that allows the entrance of the angled screw and screwdriver.

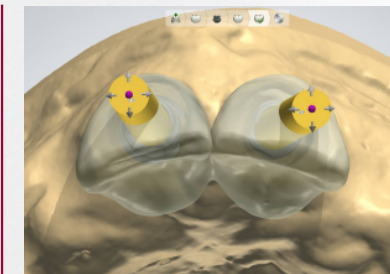
Precision machined up to +/- 5 microns

Exterior retentions that ensure a good cement grip

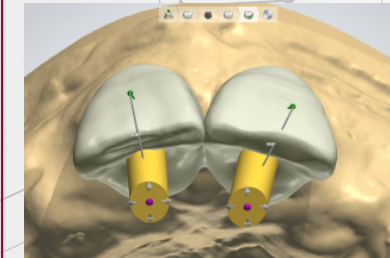
Narrow platform maximum angulation 25°
Regular/Wide platform maximum angulation 30°



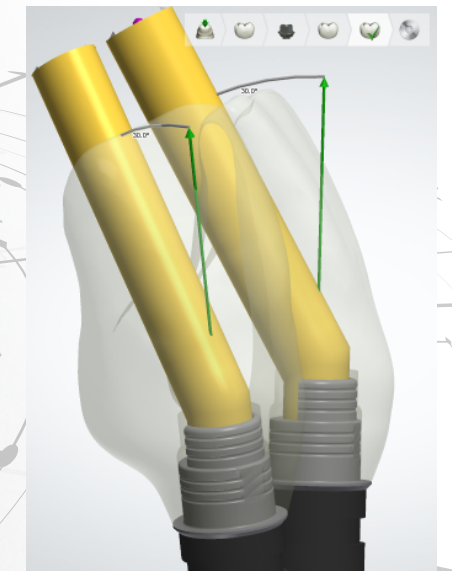
More than 50.000 cases solved by TiBase®



Structure design without angulation.



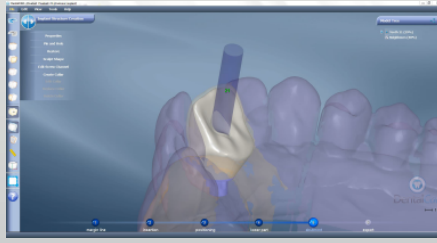
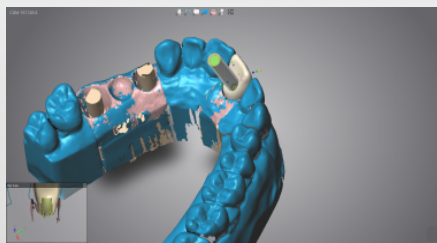
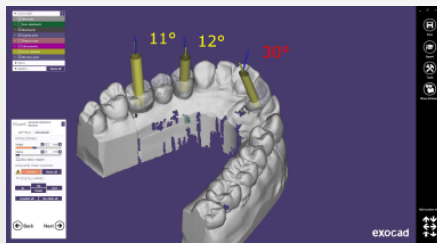
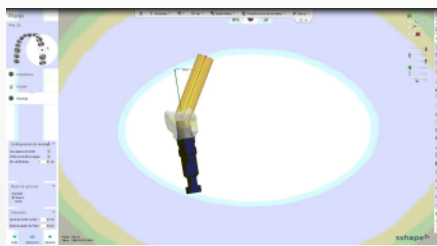
Structure design with 30° angulation.



Angulation correction from 0 to 30°

Author:
Garbident-Prótesis Dentales
Spain

CAD



3shape

exocad

dental wings

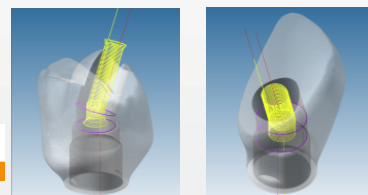
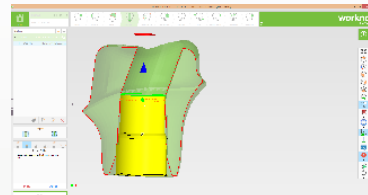
egs

Enhanced Geometry Solutions

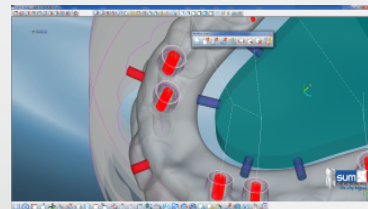
CAM

Tested CAM Software
in Dynamic TiBase®

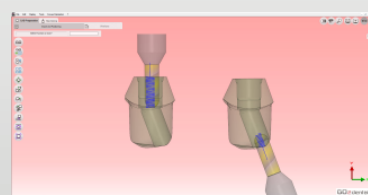
worknc
Dental



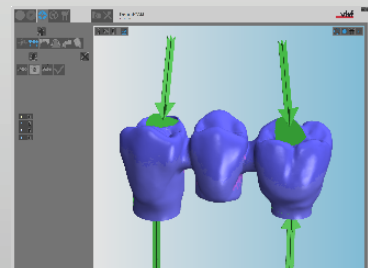
hyperDENT
COMPACT CLASSIC OPTIONS



MILL BOX
sum
DENTAL
One step beyond



GO2dental
cam for dental labs



vhf

Dynamic TiBase®

CAD library adjustments



Custom
channel
diameter

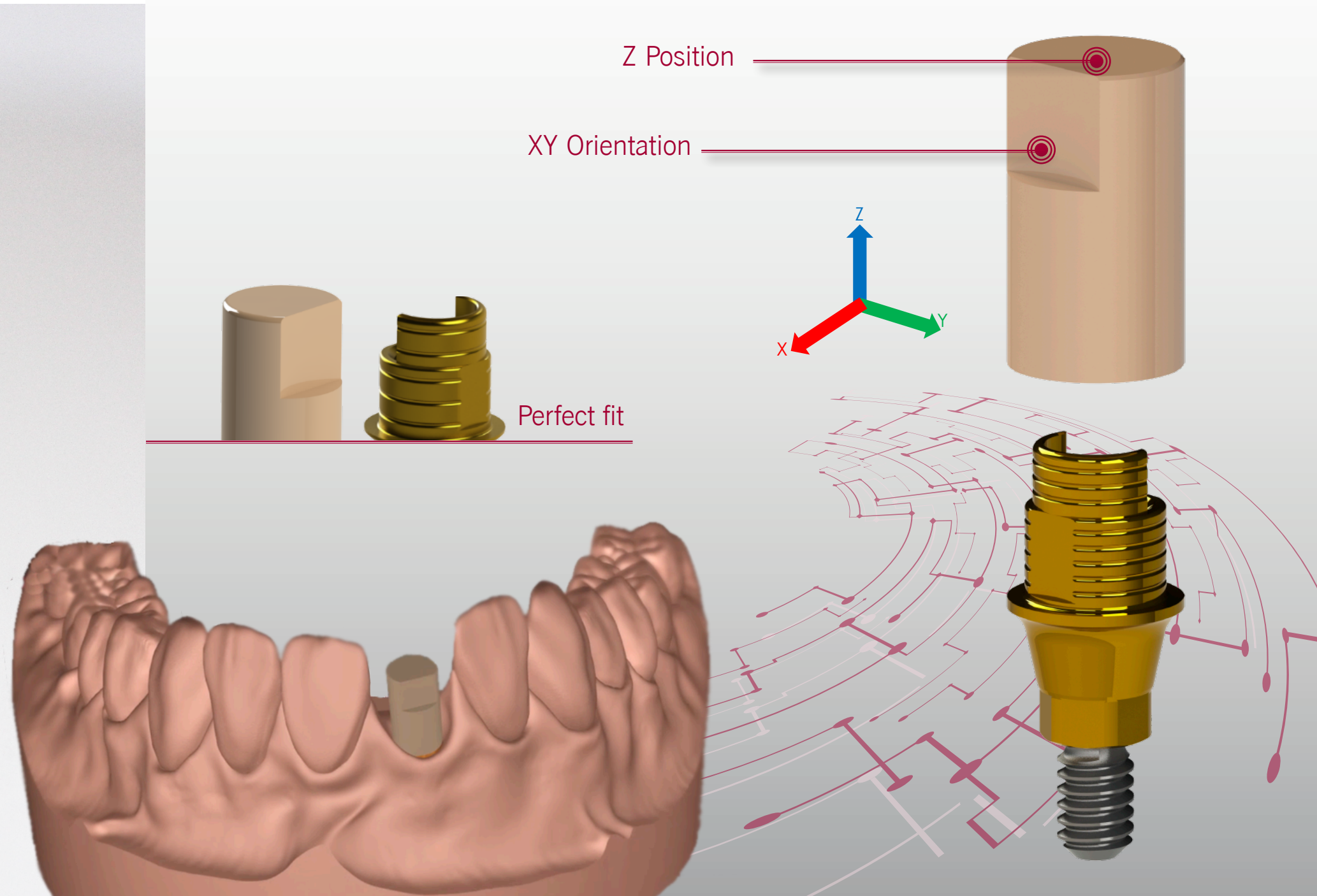
Modification of the values of cemented space and angled channel diameter to obtain a customized fit depending on each CAM, machine and tools of each customer.

Custom
cemented
space

Peek Scanbody for Dynamic Tibase®



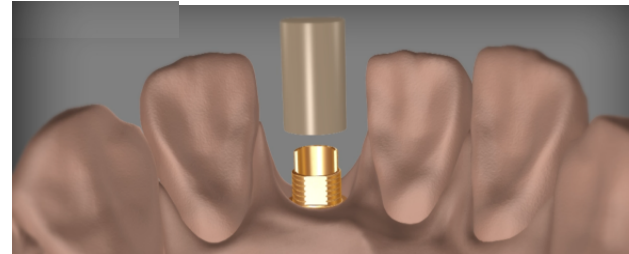
Only 5
scanbodies
for more than
275 compatibilities.



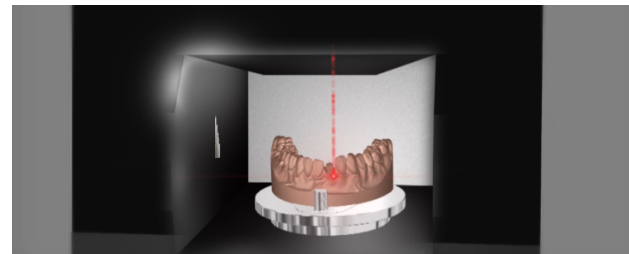
Scanning Process



Fix and adjust the scanbody to the 3.0 Dynamic TiBase®, avoiding any rotation thanks to its design.



Then, proceed with the Scanbody scanning and the position of the implant is precisely detected.



Thanks to the versatility of the 3.0 Dynamic TiBase®, extremely aesthetic restorations may be achieved through the angulation of the screw entry, which goes from 0° up to 30° using the screw and screwdriver 3.0 Dynamic Abutment® System.



3shape

exocad

dental wings

egs

Enhanced Geometry Solutions

Technical Assistance

Our International Customer Service Department (Tel. + 34 973 289580) provides immediate attention for any query.

Security & Traceability



Security & Traceability

All of our products are **patented** and manufactured under very strict quality guidelines.

With the 3.0 Dynamic System, we provide a **card for the patient** and **labels** for the laboratory and the clinic to identify the position in which Dynamic System is located.

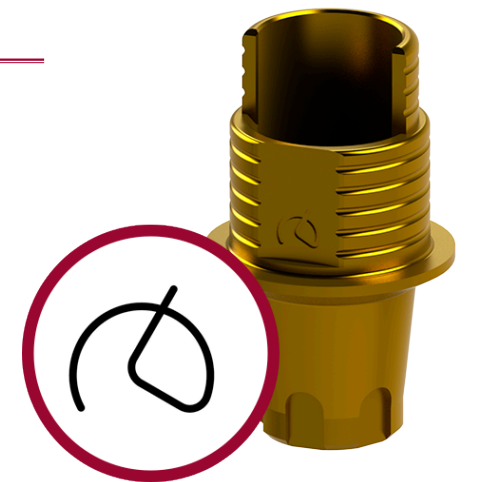
We exercise complete control over the traceability of our products to fulfil the current health legislation.

This helps repositioning the material and inform about the importance of using the appropriate tools when handling the Dynamic System components.

Exclusivity

All of our products are marked during the manufacturing process to ensure the exclusivity of each piece and control traceability.

This logo is exclusive to Dynamic Abutment® Solutions and guarantees the products are original and have successfully achieved the highest quality standards in our Quality Center.



Compatible with - AB

MODEL	IMPLANT DIAMETER	PLAT.	TIBASE®			DYNAMIC SCREW	STRAIGHT SCREW	ANALOG	SCANBODY	LIBRARY CODE
			(R) (NR)	NON ENGAGING ENGAGING	GINGIVAL HEIGHT					
I2	3,5/3,75/4,2/4,5/	St.	R	31.322.040.01-2	0,6	41.317.071.01-2	40.317.004.01-2	22.612.040.01-2	30.412.001.01-2	DAS_E_0040
	3,5/3,75/4,2/4,5/	St.	NR	31.312.040.01-2						
	5/6	St.	R	31.322.040.01-2						
	5/6	St.	NR	31.312.040.01-2						
I22	3,75/4,22	St.	R	31.322.040.01-2	0,6	41.317.071.01-2	40.317.004.01-2	22.612.040.01-2	30.412.001.01-2	DAS_E_0040
	3,75/4,22	St.	NR	31.312.040.01-2						
I5	3,5/3,75/4,2/4,5/	St.	R	31.322.040.01-2	0,6	41.317.071.01-2	40.317.004.01-2	22.612.040.01-2	30.412.001.01-2	DAS_E_0040
	3,5/3,75/4,2/4,5/	St.	NR	31.312.040.01-2						
	5/6/7/8	St.	R	31.322.040.01-2						
	5/6/7/8	St.	NR	31.312.040.01-2						
I55	3,75/4,2/4,5	St.	R	31.322.040.01-2	0,6	41.317.071.01-2	40.317.004.01-2	22.612.040.01-2	30.412.001.01-2	DAS_E_0040
	3,75/4,2/4,5	St.	NR	31.312.040.01-2						
	5/6/7/8	St.	R	31.322.040.01-2						
	5/6/7/8	St.	NR	31.312.040.01-2						
I10	4,2/5	St.	R	31.322.040.01-2	0,6	41.317.071.01-2	40.317.004.01-2	22.612.040.01-2	30.412.001.01-2	DAS_E_0040
	4,2/5	St.	NR	31.312.040.01-2						
I15	6/7/8	St.	R	31.322.040.01-2	0,6	41.317.071.01-2	40.317.004.01-2	22.612.040.01-2	30.412.001.01-2	DAS_E_0040
	6/7/8	St.	NR	31.312.040.01-2						

Compatible with - ACE

MODEL	IMPLANT DIAMETER	PLAT.	TIBASE®			DYNAMIC SCREW	STRAIGHT SCREW	ANALOG	SCANBODY	LIBRARY CODE
			(R) (NR)	NON ENGAGING ENGAGING	GINGIVAL HEIGHT					
External Hex	3,3	NP 3,5	R	31.322.023.01-2	0,3	41.316.059.01-2	40.316.008.01-2	22.612.023.01-2	30.412.001.01-2	DAS_E_0023
	3,3	NP 3,5	NR	31.312.023.01-2						
	3,75/4	RP 4,1	R	31.323.024.01-2						
	3,75/4	RP 4,1	NR	31.313.024.01-2						
Infinity TRI-CAM	3,5	3,5	R	31.322.026.01-2	0,5	41.318.075.01-2	40.318.008.01-2	22.612.026.01-2	30.412.001.01-2	DAS_E_0026
	3,5	3,5	NR	31.312.026.01-2						
	3,5	3,5	R	31.322.026.02-2	1,2	41.318.075.01-2	40.318.008.01-2	22.612.026.01-2	30.412.001.01-2	DAS_E_0026
	3,5	3,5	NR	31.312.026.02-2						
	4,3	4,3	R	31.323.027.01-2	0,3	41.320.090.01-2	40.320.008.03-2	22.613.027.01-2	30.413.002.01-2	DAS_E_0027
	4,3	4,3	NR	31.313.027.01-2						
	4,3	4,3	R	31.323.027.02-2	1,2	41.320.090.01-2	40.320.008.03-2	22.613.027.01-2	30.413.002.01-2	DAS_E_0027
	4,3	4,3	NR	31.313.027.02-2						
	5	5	R	31.324.028.01-2	0,3	41.320.090.01-2	40.320.008.03-2	22.614.028.01-2	30.413.002.01-2	DAS_E_0028
	5	5	NR	31.314.028.01-2						
Infinity Internal Hex	3,7/4,1	3,5	R	31.322.040.01-2	0,6	41.317.071.01-2	40.317.004.01-2	22.612.040.01-2	30.412.001.01-2	DAS_E_0040
	3,7/4,1	3,5	NR	31.312.040.01-2						
	4,7/5,1	4,5	R	31.323.041.01-2						
	4,7/5,1	4,5	NR	31.313.041.01-2						

MODEL	IMPLANT DIAMETER	PLAT.	TIBASE®			DYNAMIC SCREW	STRAIGHT SCREW	ANALOG	SCANBODY	LIBRARY CODE
			(R) (NR)	NON ENGAGING ENGAGING	GINGIVAL HEIGHT					
Swell	3,3	3,45	R	31.322.040.01-2	0,6	41.317.071.01-2	40.317.004.01-2	22.612.040.01-2	30.412.001.01-2	DAS_E_0040
	3,3	3,45	NR	31.312.040.01-2						
	3,3	3,45	NR (ZIO)	31.312.042.01-2	0,6	41.317.071.01-2	40.317.004.01-2	22.612.040.01-2	30.412.001.01-2	DAS_E_0042
	3,75/4,2	3,6	R	31.322.040.01-2						
	3,75/4,2	3,6	NR	31.312.040.01-2	0,6	41.317.071.01-2	40.317.004.01-2	22.612.040.01-2	30.412.001.01-2	DAS_E_0040
	3,75/4,2	3,6	NR (ZIO)	31.312.042.01-2	0,6	41.317.071.01-2	40.317.004.01-2	22.612.040.01-2	30.412.001.01-2	DAS_E_0042
	5	4	R	31.322.040.01-2	0,6	41.317.071.01-2	40.317.004.01-2	22.612.040.01-2	30.412.001.01-2	DAS_E_0040
	5	4	NR	31.312.040.01-2						
	5	4	NR (ZIO)	31.312.042.01-2	0,6	41.317.071.01-2	40.317.004.01-2	22.612.040.01-2	30.412.001.01-2	DAS_E_0042
	6	4,6	R	31.322.040.01-2	0,6	41.317.071.01-2	40.317.004.01-2	22.612.040.01-2	30.412.001.01-2	DAS_E_0040
	6	4,6	NR	31.312.040.01-2						
	6	4,6	NR (ZIO)	31.312.042.01-2	0,6	41.317.071.01-2	40.317.004.01-2	22.612.040.01-2	30.412.001.01-2	DAS_E_0042

MODEL	IMPLANT DIAMETER	PLAT.	TIBASE®			DYNAMIC SCREW	STRAIGHT SCREW	ANALOG	SCANBODY	LIBRARY CODE	
			(R) (NR)	NON ENGAGING ENGAGING	GINGIVAL HEIGHT						
Touareg-S / Touareg-OS	3,5	3,45	R	31.322.040.01-2	0,6	41.317.071.01-2	40.317.004.01-2	22.612.040.01-2	30.412.001.01-2	DAS_E_0040	
	3,5	3,45	NR	31.312.040.01-2							
	3,5	3,45	NR (ZIO)	31.312.042.01-2	0,6	41.317.071.01-2	40.317.004.01-2	22.612.040.01-2	30.412.001.01-2	DAS_E_0042	
	3,75/4,2	3,6	R	31.322.040.01-2	0,6	41.317.071.01-2	40.317.004.01-2	22.612.040.01-2	30.412.001.01-2	DAS_E_0040	
	3,75/4,2	3,6	NR	31.312.040.01-2							
	3,75/4,2	3,6	NR (ZIO)	31.312.042.01-2	0,6	41.317.071.01-2	40.317.004.01-2	22.612.040.01-2	30.412.001.01-2	DAS_E_0042	
	5	4	R	31.322.040.01-2	0,6	41.317.071.01-2	40.317.004.01-2	22.612.040.01-2	30.412.001.01-2	DAS_E_0040	
	5	4	NR	31.312.040.01-2							
	5	4	NR (ZIO)	31.312.042.01-2	0,6	41.317.071.01-2	40.317.004.01-2	22.612.040.01-2	30.412.001.01-2	DAS_E_0042	
	6	5	R	31.322.040.01-2	0,6	41.317.071.01-2	40.317.004.01-2	22.612.040.01-2	30.412.001.01-2	DAS_E_0040	
	6	5	NR	31.312.040.01-2							
	6	5	NR (ZIO)	31.312.042.01-2	0,6	41.317.071.01-2	40.317.004.01-2	22.612.040.01-2	30.412.001.01-2	DAS_E_0042	
	Touareg CloseFit	3,5	RP	R	31.322.021.01-2	1,5	41.316.073.01-2	40.316.008.02-2	22.612.021.01-2	30.412.001.01-2	DAS_E_0021
		3,5	RP	NR	31.312.021.01-2						
		4,3/5	WP	R	31.323.022.01-2	1,3	41.320.075.01-2	40.320.008.02-2	22.613.022.01-2	30.413.002.01-2	DAS_E_0022
4,3/5		WP	NR	31.313.022.01-2							
4,3/5		WP	R	31.323.022.02-2	2,0	41.320.075.01-2	40.320.008.02-2	22.613.022.01-2	30.413.002.01-2	DAS_E_0022	

Compatible with - ALPHABIO

MODEL	IMPLANT DIAMETER	PLAT.	TIBASE®			DYNAMIC SCREW	STRAIGHT SCREW	ANALOG	SCANBODY	LIBRARY CODE
			(R) (NR)	NON ENGAGING ENGAGING	GINGIVAL HEIGHT					
Alphabio External		Narrow	R	31.322.023.01-2	0,3	41.316.059.01-2	40.316.008.01-2	22.612.023.01-2	30.412.001.01-2	DAS_E_0023
		Narrow	NR	31.312.023.01-2						
		Regular	R	31.323.024.01-2	0,3	41.320.060.01-2	40.320.008.01-2	22.613.024.01-2	30.413.002.01-2	DAS_E_0024
		Regular	NR	31.313.024.01-2						
SPI	3,3/3,75/4,2/5/6	Universal	R	31.322.040.01-2	0,6	41.317.071.01-2	40.317.004.01-2	22.612.040.01-2	30.412.001.01-2	DAS_E_0040
	3,3/3,75/4,2/5/6	Universal	NR	31.312.040.01-2						
ICE	3,7/3,75/4,2/4,65/5,3	Universal	R	31.322.040.01-2	0,6	41.317.071.01-2	40.317.004.01-2	22.612.040.01-2	30.412.001.01-2	DAS_E_0040
	3,7/3,75/4,2/4,65/5,3	Universal	NR	31.312.040.01-2						
DFI	3,3/3,75/4,2/4,5	Universal	R	31.322.040.01-2	0,6	41.317.071.01-2	40.317.004.01-2	22.612.040.01-2	30.412.001.01-2	DAS_E_0040
	3,3/3,75/4,2/4,5	Universal	NR	31.312.040.01-2						
ATID	3,3/3,75/4,2/5/6	Universal	R	31.322.040.01-2	0,6	41.317.071.01-2	40.317.004.01-2	22.612.040.01-2	30.412.001.01-2	DAS_E_0040
	3,3/3,75/4,2/5/6	Universal	NR	31.312.040.01-2						

Compatible with - ANCLADEN

MODEL	IMPLANT DIAMETER	PLAT.	TIBASE®			DYNAMIC SCREW	STRAIGHT SCREW	ANALOG	SCANBODY	LIBRARY CODE
			(R) (NR)	NON ENGAGING ENGAGING	GINGIVAL HEIGHT					
Anclalock	3,75/4,25/5	3,5	R	31.322.040.01-2	0,6	41.317.071.01-2	40.317.004.01-2	22.612.040.01-2	30.412.001.01-2	DAS_E_0040
	3,75/4,25/5	3,5	NR	31.312.040.01-2						

Compatible with - ANTHOGRY

MODEL	IMPLANT DIAMETER	PLAT.	TIBASE®			DYNAMIC SCREW	STRAIGHT SCREW	ANALOG	SCANBODY	LIBRARY CODE
			(R) (NR)	NON ENGAGING ENGAGING	GINGIVAL HEIGHT					
Anthofit HE	3,5/3,75/4	R (4,1)	R	31.323.024.01-2	0,3	41.320.065.01-2	40.320.008.01-2	22.613.024.01-2	30.413.002.01-2	DAS_E_0024
	3,5/3,75/4	R (4,1)	NR	31.313.024.01-2						
Ossfit	3,5/4,2	4,8	R	31.323.037.01-2	0,6	41.320.067.01-2	40.320.007.01-2	22.613.037.01-2	30.413.004.01-2	DAS_E_0037
	3,5/4,2	4,8	NR	31.313.037.01-2						

Compatible with - ARDS

MODEL	IMPLANT DIAMETER	PLAT.	TIBASE®			DYNAMIC SCREW	STRAIGHT SCREW	ANALOG	SCANBODY	LIBRARY CODE
			(R) (NR)	NON ENGAGING ENGAGING	GINGIVAL HEIGHT					
Smart	3,75/4,2/4,5	3,75	R	31.322.040.01-2	0,6	41.317.071.01-2	40.317.004.01-2	22.612.040.01-2	30.412.001.01-2	DAS_E_0040
	3,75/4,2/4,5	3,75	NR	31.312.040.01-2						
Classic	3,75/4,2/4,5	3,75	R	31.322.040.01-2	0,6	41.317.071.01-2	40.317.004.01-2	22.612.040.01-2	30.412.001.01-2	DAS_E_0040
	3,75/4,2/4,5	3,75	NR	31.312.040.01-2						
	3,3/3,75/4,2/5/6	3,75	R	31.322.040.01-2	0,6	41.317.071.01-2	40.317.004.01-2	22.612.040.01-2	30.412.001.01-2	DAS_E_0040
	3,3/3,75/4,2/5/6	3,75	NR	31.312.040.01-2						
Premium	3,3/3,75/4,2/5/6	3,75	R	31.322.040.01-2	0,6	41.317.071.01-2	40.317.004.01-2	22.612.040.01-2	30.412.001.01-2	DAS_E_0040
	3,3/3,75/4,2/5/6	3,75	NR	31.312.040.01-2						

Compatible with - ASTRA

MODEL	IMPLANT DIAMETER	PLAT.	TIBASE®			DYNAMIC SCREW	STRAIGHT SCREW	ANALOG	SCANBODY	LIBRARY CODE
			(R) (NR)	NON ENGAGING ENGAGING	GINGIVAL HEIGHT					
Yellow	3	Yellow (X-Narrow)	R	31.322.109.01-2	1,4	41.314.070.01-2			30.412.001.01-2	DAS_E_0109
	3	Yellow (X-Narrow)	NR	31.312.109.01-2						
Aqua	3,5/4	Aqua(Narrow)	R	31.323.004.01-2	1,0	41.316.076.01-2	40.316.005.02-2	22.613.004.01-2	30.413.002.01-2	DAS_E_0004
	3,5/4	Aqua(Narrow)	NR	31.313.004.01-2						
	3,5/4	Aqua(Narrow)	R	31.323.004.02-2						
	3,5/4	Aqua(Narrow)	NR	31.313.004.02-2						
Lilac	4,5/5	Lilac (Wide)	R	31.324.005.01-2	1,0	41.320.090.01-2	40.320.005.03-2	22.614.005.01.2	30.413.002.01-2	DAS_E_0005
	4,5/5	Lilac (Wide)	NR	31.314.005.01-2						
	4,5/5	Lilac (Wide)	R	31.324.005.02-2						
	4,5/5	Lilac (Wide)	NR	31.314.005.02-2						
Evolution (Internal)	3,6	3.6	R	31.322.006.01-2	1,2	41.316.072.01-2	40.316.005.01-2		30.412.001.01-2	DAS_E_0006
	3,6	3.6	NR	31.312.006.01-2						
	4,2	4.2	R	31.323.007.01-2	1,5	41.318.074.01-2	40.318.005.02-2		30.413.002.01-2	DAS_E_0007
	4,2	4.2	NR	31.313.007.01-2						
	4,8	4.8	R	31.324.091.01-2	1,2	41.320.082.01-2	40.320.005.01-2		30.413.002.01-2	DAS_E_0091
	4,8	4.8	NR	31.314.091.01-2						
Evolution (External Cone)		Universal	R	31.323.008.01-2	0,5	41.318.045.01-2	40.318.005.01-2		30.412.001.01-2	DAS_E_0008

Compatible with - AVINENT

MODEL	IMPLANT DIAMETER	PLAT.	TIBASE®			DYNAMIC SCREW	STRAIGHT SCREW	ANALOG	SCANBODY	LIBRARY CODE
			(R) (NR)	NON ENGAGING ENGAGING	GINGIVAL HEIGHT					
HE	3,3//3,5/4	3,5	R	31.322.023.01-2	0,3	41.318.044.01-2			30.412.001.01-2	DAS_E_0023
	3,3//3,5/4	3,5	NR	31.312.023.01-2						
	3,3/3,8/4/4,2/4,8//4,5/5	4,1	R	31.323.024.01-2						
	3,3/3,8/4/4,2/4,8//4,5/5	4,1	NR	31.313.024.01-2						
HI	3,1//3,5/4	3,5	R	31.322.040.01-2	0,6	41.317.071.01-2	40.317.004.01-2	22.612.040.01-2	30.412.001.01-2	DAS_E_0040
	3,1//3,5/4	3,5	NR	31.312.040.01-2						
	3,3/3,8/4/4,2/4,8//4,5/5	4,1	R	31.322.040.01-2						
	3,3/3,8/4/4,2/4,8//4,5/5	4,1	NR	31.312.040.01-2						
Transepithelial		Regular	R	31.323.025.01-2	0,3	41.314.039.01-2	40.314.008.01-2	22.613.025.01-2	30.413.005.01-2	DAS_E_0025

Compatible with - BEGO

MODEL	IMPLANT DIAMETER	PLAT.	TIBASE®			DYNAMIC SCREW	STRAIGHT SCREW	ANALOG	SCANBODY	LIBRARY CODE
			(R) (NR)	NON ENGAGING ENGAGING	GINGIVAL HEIGHT					
RS/RSX	3.0	3.0	R	31.321.049.01-2	0,6	41.314.064.01-2			30.412.001.01-2	DAS_E_0049
	3.0	3.0	NR	31.311.049.01-2						
S/RI	3,25/3,75	3,25/3,75	R	31.323.051.01-2	0,5	41.318.064.01-2			30.412.001.01-2	DAS_E_0051
	3,25/3,75	3,25/3,75	NR	31.313.051.01-2						
	4,1	4,1	R	31.323.051.01-2	0,5	41.318.064.01-2			30.412.001.01-2	DAS_E_0051
	4,1	4,1	NR	31.313.051.01-2						
	4,5	4,5	R	31.324.052.01-2	0,3	41.318.064.01-2			30.413.002.01-2	DAS_E_0052
	4,5	4,5	NR	31.314.052.01-2						
	5,5	5,5	R	31.325.081.01-2	0,4	41.318.064.01-2			30.414.003.01-2	DAS_E_0081
	5,5	5,5	NR	31.315.081.01-2						

Compatible with - BIOGENESIS

MODEL	IMPLANT DIAMETER	PLAT.	TIBASE®			DYNAMIC SCREW	STRAIGHT SCREW	ANALOG	SCANBODY	LIBRARY CODE
			(R) (NR)	NON ENGAGING ENGAGING	GINGIVAL HEIGHT					
3icon	3,3	Mini (Pink)	R	31.322.023.01-2	0,3	41.316.059.01-2	40.316.008.01-2	22.612.023.01-2	30.412.001.01-2	DAS_E_0023
	3,3	Mini (Pink)	NR	31.312.023.01-2						
	3,75/4/4,3/4,5	Regular (Blue)	R	31.323.024.01-2	0,3	41.320.060.01-2	40.320.008.01-2	22.613.024.01-2	30.413.002.01-2	DAS_E_0024
	3,75/4/4,3/4,5	Regular (Blue)	NR	31.313.024.01-2						
	3,5//4/4,5/5	Pink/Blue	R	31.324.005.01-2	1,0	41.320.090.01-2	40.320.005.03-2	22.614.005.01-2	30.413.002.01-2	DAS_E_0005
3,5//4/4,5/5	Pink/Blue	NR	31.314.005.01-2							
Aticon	3,5//4/4,5/5	Pink/Blue	R	31.324.005.02-2	2,0	41.320.090.01-2	40.320.005.03-2	22.614.005.01-2	30.413.002.01-2	DAS_E_0005
	3,5//4/4,5/5	Pink/Blue	NR	31.314.005.02-2						
	Iticon	3,5/4,1/4,8	4,8	R	31.323.037.01-2	0,6	41.320.067.01-2	40.320.007.01-2	22.613.037.01-2	30.413.004.01-2
	3,5/4,1/4,8	4,8	NR	31.313.037.01-2						

Compatible with - BIOHORIZON

MODEL	IMPLANT DIAMETER	PLAT.	TIBASE®			DYNAMIC SCREW	STRAIGHT SCREW	ANALOG	SCANBODY	LIBRARY CODE
			(R) (NR)	NON ENGAGING ENGAGING	GINGIVAL HEIGHT					
External	3,5	3,7 (Yellow)	R	31.322.023.01-2	0,3	41.318.065.01-2		30.412.001.01-2	DAS_E_0023	
	3,5	3,7 (Yellow)	NR	31.312.023.01-2						
Tapered Internal	3/3,4/3,8	3 (Grey)	R	31.322.102.01-2	1,8	41.317.065.01-2		30.412.001.01-2	DAS_E_0102	
	3/3,4/3,8	3 (Grey)	NR	31.312.102.01-2						
	3/3,8/4,6	3,5 (Yellow)	R	31.322.040.01-2	0,6	41.317.071.01-2	40.317.004.01-2	22.612.040.01-2	30.412.001.01-2	DAS_E_0040
	3/3,8/4,6	3,5 (Yellow)	NR	31.312.040.01-2						
	4,6/5,8	4,5 (Green)	R	31.323.041.01-2						
4,6/5,8	4,5 (Green)	NR	31.313.041.01-2	0,4	41.317.071.01-2	40.317.004.01-2	22.613.041.01-2	30.413.002.01-2	DAS_E_0041	
Internal	3,5/4	3,5 (Yellow)	R	31.322.040.01-2	0,6	41.317.071.01-2	40.317.004.01-2	22.612.040.01-2	30.412.001.01-2	DAS_E_0040
	3,5/4	3,5 (Yellow)	NR	31.312.040.01-2						
	4/5	4,5 (Green)	R	31.323.041.01-2	0,4	41.317.071.01-2	40.317.004.01-2	22.613.041.01-2	30.413.002.01-2	DAS_E_0041
	4/5	4,5 (Green)	NR	31.313.041.01-2						

Compatible with - BIOMET 3I

MODEL	IMPLANT DIAMETER	PLAT.	TIBASE®			DYNAMIC SCREW	STRAIGHT SCREW	ANALOG	SCANBODY	LIBRARY CODE
			(R) (NR)	NON ENGAGING ENGAGING	GINGIVAL HEIGHT					
Osseotite	3,25	3,4	R	31.322.003.01-2	0,3	41.320.065.01-2	40.320.003.02-2	22.612.003.01-2	30.412.001.01-2	DAS_E_0003
	3,25	3,4	NR	31.312.003.01-2						
	4	4,1	R	31.323.024.01-2	0,3	41.320.060.01-2	40.320.003.02-2	22.613.024.01-2	30.413.002.01-2	DAS_E_0024
	4	4,1	NR	31.313.024.01-2						
Certain	3,25/4	3,4	R	31.322.001.01-2	0,3	41.316.084.01-2	40.316.003.01-2	22.612.001.01-2	30.412.001.01-2	DAS_E_0001
	3,25/4	3,4	NR	31.312.001.01-2						
	3,25/4	3,4	R	31.322.001.02-2	1,2	41.316.084.01-2	40.316.003.01-2	22.612.001.01-2	30.412.001.01-2	DAS_E_0001
	3,25/4	3,4	NR	31.312.001.02-2						
	4/5	4,1	R	31.323.002.01-2	0,3	41.316.084.01-2	40.316.003.01-2	22.613.002.01-2	30.413.002.01-2	DAS_E_0002
	4/5	4,1	NR	31.313.002.01-2						
	4/5	4,1	R	31.323.002.02-2	1,2	41.316.084.01-2	40.316.003.01-2	22.613.002.01-2	30.413.002.01-2	DAS_E_0002
	4/5	4,1	NR	31.313.002.02-2						
	5	5	R	31.324.057.01-2	0,5	41.316.084.01-2	40.316.003.01-2		30.414.003.01-2	DAS_E_0057
	5	5	NR	31.314.057.01-2						
Low Profile		Universal	R	31.323.025.01-2	0,3	41.314.039.01-2	40.314.008.01-2	22.613.025.01-2	30.413.005.01-2	DAS_E_0025

Compatible with - BILOK

MODEL	IMPLANT DIAMETER	PLAT.	TIBASE®			DYNAMIC SCREW	STRAIGHT SCREW	ANALOG	SCANBODY	LIBRARY CODE
			(R) (NR)	NON ENGAGING ENGAGING	GINGIVAL HEIGHT					
External Hexagon	3,45	3,45	R	31.322.003.01-2	0,3	41.320.065.01-2	40.320.003.02-2	22.612.003.01-2	30.412.001.01-2	DAS_E_0003
	3,45	3,45	NR	31.312.003.01-2						

Compatible with - BIONER

MODEL	IMPLANT DIAMETER	PLAT.	TIBASE®			DYNAMIC SCREW	STRAIGHT SCREW	ANALOG	SCANBODY	LIBRARY CODE
			(R) (NR)	NON ENGAGING ENGAGING	GINGIVAL HEIGHT					
Ikelt / Bikelt	3,3/3,75/4	4,1	R	31.323.024.01-2	0,3	41.320.060.01-2	40.320.008.01-2	22.613.024.01-2	30.413.002.01-2	DAS_E_0024
	3,3/3,75/4	4,1	NR	31.313.024.01-2						
Hikelt	3,8	3,95	R	31.322.040.01-2	0,6	41.317.071.01-2	40.317.004.01-2	22.612.040.01-2	30.412.001.01-2	DAS_E_0040
	3,8	3,95	NR	31.312.040.01-2						
	4,7	4,9	R	31.323.041.01-2	0,4	41.317.071.01-2	40.317.004.01-2	22.613.041.01-2	30.413.002.01-2	DAS_E_0041
	4,7	4,9	NR	31.313.041.01-2						
TopDM	3,5	3,5	R	31.322.021.01-2	1,5	41.316.073.01-2	40.316.008.02-2	22.612.021.01-2	30.412.001.01-2	DAS_E_0021
	3,5	3,5	NR	31.312.021.01-2						
	4	4	R	31.322.021.01-2	1,5	41.316.073.01-2	40.316.008.02-2	22.612.021.01-2	30.412.001.01-2	DAS_E_0021
	4	4	NR	31.312.021.01-2						
	5	5	R	31.322.021.01-2	1,5	41.316.073.01-2	40.316.008.02-2	22.612.021.01-2	30.412.001.01-2	DAS_E_0021
	5	5	NR	31.312.021.01-2						
Transepithelial A-5M		Regular	R	31.323.025.01-2	0,3	41.314.039.01-2	40.314.008.01-2	22.613.025.01-2	30.413.005.01-2	DAS_E_0025

Compatible with - BIOTEC

MODEL	IMPLANT DIAMETER	PLAT.	TIBASE®			DYNAMIC SCREW	STRAIGHT SCREW	ANALOG	SCANBODY	LIBRARY CODE
			(R) (NR)	NON ENGAGING ENGAGING	GINGIVAL HEIGHT					
SPR/CIM	3,3	3,3	R	31.322.040.01-2	0,6	41.317.071.01-2	40.317.004.01-2	22.612.040.01-2	30.412.001.01-2	DAS_E_0040
	3,3	3,3	NR	31.312.040.01-2						
	3,75	3,75	R	31.322.040.01-2	0,6	41.317.071.01-2	40.317.004.01-2	22.612.040.01-2	30.412.001.01-2	DAS_E_0040
	3,75	3,75	NR	31.312.040.01-2						
SPR/SPTT/CIM	4,2	4,2	R	31.322.040.01-2	0,6	41.317.071.01-2	40.317.004.01-2	22.612.040.01-2	30.412.001.01-2	DAS_E_0040
	4,2	4,2	NR	31.312.040.01-2						
	5	5	R	31.322.040.01-2	0,6	41.317.071.01-2	40.317.004.01-2	22.612.040.01-2	30.412.001.01-2	DAS_E_0040
	5	5	NR	31.312.040.01-2						

Compatible with - BTI

MODEL	IMPLANT DIAMETER	PLAT.	TIBASE®			DYNAMIC SCREW	STRAIGHT SCREW	ANALOG	SCANBODY	LIBRARY CODE
			(R) (NR)	NON ENGAGING ENGAGING	GINGIVAL HEIGHT					
External Connection Tiny	2,5/3/3,3/3,5/3,75	Tiny 3,5	R	31.322.009.01-2						
	2,5/3/3,3/3,5/3,75	Tiny 3,5	NR	31.312.009.01-2	0,3	41.320.051.01-2	40.320.003.02-2	22.612.009.01-2	30.412.001.01-2	DAS_E_0009
External Connection	3,75/4/4,5/5	Universal 4,1	R	31.323.024.01-2						
	3,75/4/4,5/5	Universal 4,1	NR	31.313.024.01-2	0,3	41.320.060.01-2	40.320.003.02-2	22.613.024.01-2	30.413.002.01-2	DAS_E_0024
Internal Connection	3,3/3,5/3,75/4/4,25/5/5,5	Universal 4,1	R	31.323.010.01-2						
	3,3/3,5/3,75/4/4,25/5/5,5	Universal 4,1	NR	31.313.010.01-2	0,3	41.318.065.01-2	40.318.003.01-2	22.613.010.01-2	30.413.002.01-2	DAS_E_0010
	4,5/5/5,5/6/6,25	Wide 5,5	R	31.324.059.01-2						
	4,5/5/5,5/6/6,25	Wide 5,5	NR	31.314.059.01-2	0,7	41.318.065.01-2	40.318.003.01-2		30.414.003.01-2	DAS_E_0059

Compatible with - BTK

MODEL	IMPLANT DIAMETER	PLAT.	TIBASE®			DYNAMIC SCREW	STRAIGHT SCREW	ANALOG	SCANBODY	LIBRARY CODE
			(R) (NR)	NON ENGAGING ENGAGING	GINGIVAL HEIGHT					
Klassic / Konic External Hexagon	3,25	3,4 EN	R	31.322.003.01-2						
	3,25	3,4 EN	NR	31.312.003.01-2	0,3	41.318.065.01-2	40.318.003.01-2		30.412.001.01-2	DAS_E_0003
	3,25PL/3,75/4	4,1 ER	R	31.323.024.01-2						
	3,25PL/3,75/4	4,1 ER	NR	31.313.024.01-2	0,3	41.320.060.01-2	40.320.008.01-2	22.613.024.01-2	30.413.002.01-2	DAS_E_0024
Klassic / Konic Internal Hexagon	3,25/4	3,5 IR	R	31.322.040.01-2						
	3,25/4	3,5 IR	NR	31.312.040.01-2	0,6	41.317.071.01-2	40.317.004.01-2	22.612.040.01-2	30.412.001.01-2	DAS_E_0040
	3,25/4	3,5 IR	NR (ZIO)	31.312.042.01-2	0,6	41.317.071.01-2	40.317.004.01-2	22.612.040.01-2	30.412.001.01-2	DAS_E_0042

Compatible with - B&W

MODEL	IMPLANT DIAMETER	PLAT.	TIBASE®			DYNAMIC SCREW	STRAIGHT SCREW	ANALOG	SCANBODY	LIBRARY CODE
			(R) (NR)	NON ENGAGING ENGAGING	GINGIVAL HEIGHT					
External Hexagon	3,75/4	4,1	R	31.323.024.01-2						
	3,75/4	4,1	NR	31.313.024.01-2	0,3	41.320.060.01-2	40.320.008.01-2	22.613.024.01-2	30.413.002.01-2	DAS_E_0024

Compatible with - CAMLOG

MODEL	IMPLANT DIAMETER	PLAT.	TIBASE®			DYNAMIC SCREW	STRAIGHT SCREW	ANALOG	SCANBODY	LIBRARY CODE
			(R) (NR)	NON ENGAGING ENGAGING	GINGIVAL HEIGHT					
Camlog Screw-Line	3,8	3,8	R	31.322.011.01-2*	0,3	41.316.094.01-2	40.316.005.04-2		30.412.001.01-2	DAS_E_0011
	3,8	3,8	NR	31.312.011.01-2*						
	4,3	4,3	R	31.323.012.01-2*	0,3	41.316.094.01-2	40.316.005.04-2		30.413.002.01-2	DAS_E_0012
	4,3	4,3	NR	31.313.012.01-2*						

Maximum angulation 20°

Compatible with - CONEXÃO SISTEMA DE PRÓTESE

MODEL	IMPLANT DIAM.	PLAT.	TIBASE®			DYNAMIC SCREW	STRAIGHT SCREW	ANALOG	SCANBODY	LIBRARY CODE
			(R) (NR)	NON ENGAGING ENGAGING	GINGIVAL HEIGHT					
Flash	3,5/4,3/5	Universal	R	31.322.021.01-2	1,5	41.316.073.01-2	40.316.008.02-2	22.612.021.01-2	30.412.001.01-2	DAS_E_0021
	3,5/4,3/5	Universal	NR	31.312.021.01-2						
Torq	3,5/3,75/4	Universal	R	31.322.021.01-2	1,5	41.316.073.01-2	40.316.008.02-2	22.612.021.01-2	30.412.001.01-2	DAS_E_0021
	3,5/3,75/4	Universal	NR	31.312.021.01-2						
Expand	3,75/4/5	Universal	R	31.322.021.01-2	1,5	41.316.073.01-2	40.316.008.02-2	22.612.021.01-2	30.412.001.01-2	DAS_E_0021
	3,75/4/5	Universal	NR	31.312.021.01-2						

Compatible with - CORTEX

MODEL	IMPLANT DIAMETER	PLAT.	TIBASE®			DYNAMIC SCREW	STRAIGHT SCREW	ANALOG	SCANBODY	LIBRARY CODE
			(R) (NR)	NON ENGAGING ENGAGING	GINGIVAL HEIGHT					
Dynamix	3,3/3,8/4,2/5/6	3,75	R	31.322.040.01-2	0,6	41.317.071.01-2	40.317.004.01-2	22.612.040.01-2	30.412.001.01-2	DAS_E_0040
	3,3/3,8/4,2/5/6	3,75	NR	31.312.040.01-2						
Classix	3,3/3,8/4,2/5/6	3,75	R	31.322.040.01-2	0,6	41.317.071.01-2	40.317.004.01-2	22.612.040.01-2	30.412.001.01-2	DAS_E_0040
	3,3/3,8/4,2/5/6	3,75	NR	31.312.040.01-2						
Saturn	3,8/4,2	3,5	R	31.322.040.01-2	0,6	41.317.071.01-2	40.317.004.01-2	22.612.040.01-2	30.412.001.01-2	DAS_E_0040
	3,8/4,2	3,5	NR	31.312.040.01-2						

Compatible with - DENTALTECH

MODEL	IMPLANT DIAMETER	PLAT.	TIBASE®			DYNAMIC SCREW	STRAIGHT SCREW	ANALOG	SCANBODY	LIBRARY CODE
			(R) (NR)	NON ENGAGING ENGAGING	GINGIVAL HEIGHT					
Implogic	4,5	4,5 (Blue)	R	31.323.041.01-2	0,4	41.317.071.01-2	40.317.004.01-2	22.613.041.01-2	30.413.002.01-2	DAS_E_0041
	4,5	4,5 (Blue)	NR	31.313.041.01-2						

Compatible with - DENTIS

MODEL	IMPLANT DIAMETER	PLAT.	TIBASE®			DYNAMIC SCREW	STRAIGHT SCREW	ANALOG	SCANBODY	LIBRARY CODE
			(R) (NR)	NON ENGAGING ENGAGING	GINGIVAL HEIGHT					
s-Clean	3,7	Mini	R	31.323.030.01-2	1,1	41.320.079.01-2		30.413.002.01-2	DAS_E_0030	
	3,7	Mini	NR	31.313.030.01-2						
	3,7	Mini	R	31.323.030.02-2	2,0	41.320.079.01-2		30.413.002.01-2	DAS_E_0030	
	3,7	Mini	NR	31.313.030.02-2						
	4,1/4,3	Regular	R	31.323.030.01-2	1,1	41.320.079.01-2		30.413.002.01-2	DAS_E_0030	
	4,1/4,3	Regular	NR	31.313.030.01-2						
	4,1/4,3	Regular	R	31.323.030.02-2	2,0	41.320.079.01-2		30.413.002.01-2	DAS_E_0030	
	4,1/4,3	Regular	NR	31.313.030.02-2						
	4,8	Wide	R	31.323.030.01-2	1,1	41.320.079.01-2		30.413.002.01-2	DAS_E_0030	
	4,8	Wide	NR	31.313.030.01-2						
	4,8	Wide	R	31.323.030.02-2	2,0	41.320.079.01-2		30.413.002.01-2	DAS_E_0030	
	4,8	Wide	NR	31.313.030.02-2						

Compatible with - DENTIUM

MODEL	IMPLANT DIAMETER	PLAT.	TIBASE®			DYNAMIC SCREW	STRAIGHT SCREW	ANALOG	SCANBODY	LIBRARY CODE
			(R) (NR)	NON ENGAGING ENGAGING	GINGIVAL HEIGHT					
SimpleLine II	3,8/4,3	4,8	R	31.323.037.01-2	0,6	41.320.067.01-2	40.320.007.01-2	22.613.037.01-2	30.413.004.01-2	DAS_E_0037
	3,8/4,3	4,8	NR	31.313.037.01-2						
SuperLine and Implantium	3,4	3,6	R	31.323.030.01-2	1,1	41.320.079.01-2			30.413.002.01-2	DAS_E_0030
	3,4	3,6	NR	31.313.030.01-2						
	3,4	3,6	R	31.323.030.02-2	2,0	41.320.079.01-2			30.413.002.01-2	DAS_E_0030
	3,4	3,6	NR	31.313.030.02-2						
	3,8	4	R	31.323.030.01-2	1,1	41.320.079.01-2			30.413.002.01-2	DAS_E_0030
	3,8	4	NR	31.313.030.01-2						
	3,8	4	R	31.323.030.02-2	2,0	41.320.079.01-2			30.413.002.01-2	DAS_E_0030
	3,8	4	NR	31.313.030.02-2						
	4,3	4,5	R	31.323.030.01-2	1,1	41.320.079.01-2			30.413.002.01-2	DAS_E_0030
	4,3	4,5	NR	31.313.030.01-2						
	4,3	4,5	R	31.323.030.02-2	2,0	41.320.079.01-2			30.413.002.01-2	DAS_E_0030
	4,3	4,5	NR	31.313.030.02-2						
	4,8	5	R	31.323.030.01-2	1,1	41.320.079.01-2			30.413.002.01-2	DAS_E_0030
	4,8	5	NR	31.313.030.01-2						
	4,8	5	R	31.323.030.02-2	2,0	41.320.079.01-2			30.413.002.01-2	DAS_E_0030
	4,8	5	NR	31.313.030.02-2						
	4,8	6	R	31.323.030.01-2	1,1	41.320.079.01-2			30.413.002.01-2	DAS_E_0030
	4,8	6	NR	31.313.030.01-2						
	4,8	6	R	31.323.030.02-2	2,0	41.320.079.01-2			30.413.002.01-2	DAS_E_0030
	4,8	6	NR	31.313.030.02-2						

Compatible with - DIO IMPLANTS

MODEL	IMPLANT DIAMETER	PLAT.	TIBASE®			DYNAMIC SCREW	STRAIGHT SCREW	ANALOG	SCANBODY	LIBRARY CODE
			(R) (NR)	NON ENGAGING ENGAGING	GINGIVAL HEIGHT					
SM System	4,5/5/5,3	Regular/Wide	R	31.323.013.01-2	0,7	41.320.074.01-2	40.320.007.02-2	30.413.002.01-2	DAS_E_0013	
	4,5/5/5,3	Regular/Wide	NR	31.313.013.01-2						
UF II Narrow	3/3,3	Narrow	R	31.322.014.01-2	1,2	41.314.067.01-2	30.412.001.01-2	DAS_E_0014		
	3/3,3	Narrow	NR	31.312.014.01-2						
UF II	3,8/4/4,5/5/5,5	Regular	R	31.323.030.01-2	1,1	41.320.079.01-2	30.413.002.01-2	DAS_E_0030		
	3,8/4/4,5/5/5,5	Regular	NR	31.313.030.01-2						
	3,8/4/4,5/5/5,5	Regular	R	31.323.030.02-2	2,0	41.320.079.01-2	30.413.002.01-2	DAS_E_0030		
	3,8/4/4,5/5/5,5	Regular	NR	31.313.030.02-2						
External	3,3/3,8	Narrow 3,5	R	31.322.023.01-2	0,3	41.316.059.01-2	40.316.008.01-2	22.612.023.01-2	30.412.001.01-2	DAS_E_0023
	3,3/3,8	Narrow 3,5	NR	31.312.023.01-2						
	3,75/4/4,5	Regular 4,1	R	31.323.024.01-2	0,3	41.320.060.01-2	40.320.008.01-2	22.613.024.01-2	30.413.002.01-2	DAS_E_0024
	3,75/4/4,5	Regular 4,1	NR	31.313.024.01-2						

Compatible with - DSP BIOMEDICAL

MODEL	IMPLANT DIAMETER	PLAT.	TIBASE®			DYNAMIC SCREW	STRAIGHT SCREW	ANALOG	SCANBODY	LIBRARY CODE
			(R) (NR)	NON ENGAGING ENGAGING	GINGIVAL HEIGHT					
External Hexagon	3,75/4/5//3,5/3,8/4,3	4,1	R	31.323.024.01-2	0,3	41.320.065.01-2	40.320.008.01-2	22.613.024.01-2	30.413.002.01-2	DAS_E_0024
	3,75/4/5//3,5/3,8/4,3	4,1	NR	31.313.024.01-2						

Compatible with - ECKERMAN

MODEL	IMPLANT DIAMETER	PLAT.	TIBASE®			DYNAMIC SCREW	STRAIGHT SCREW	ANALOG	SCANBODY	LIBRARY CODE
			(R) (NR)	NON ENGAGING ENGAGING	GINGIVAL HEIGHT					
Hexagon	3/3,5/4/4,5/5	4,1	R	31.323.024.01-2	0,3	41.320.060.01-2	40.320.008.01-2	22.613.024.01-2	30.413.002.01-2	DAS_E_0024
	3/3,5/4/4,5/5	4,1	NR	31.313.024.01-2						

Compatible with - ELITE MEDICAL

MODEL	IMPLANT DIAMETER	PLAT.	TIBASE®			DYNAMIC SCREW	STRAIGHT SCREW	ANALOG	SCANBODY	LIBRARY CODE
			(R) (NR)	NON ENGAGING ENGAGING	GINGIVAL HEIGHT					
External Connection		Narrow	R	31.322.023.01-2	0,3	41.316.059.01-2	40.316.008.01-2	22.612.023.01-2	30.412.001.01-2	DAS_E_0023
		Narrow	NR	31.312.023.01-2						
		Regular	R	31.323.024.01-2	0,3	41.320.060.01-2	40.320.008.01-2	22.613.024.01-2	30.413.002.01-2	DAS_E_0024
		Regular	NR	31.313.024.01-2						

MODEL	IMPLANT DIAMETER	PLAT.	TIBASE®			DYNAMIC SCREW	STRAIGHT SCREW	ANALOG	SCANBODY	LIBRARY CODE
			(R) (NR)	NON ENGAGING ENGAGING	GINGIVAL HEIGHT					
Naturactis	3,5	3,4	R	31.323.004.01-2	1,0	41.316.076.01-2	40.316.005.02-2	22.613.004.01-2	30.413.002.01-2	DAS_E_0004
	3,5	3,4	NR	31.313.004.01-2						
	3,5	3,4	R	31.323.004.02-2	2,0	41.316.076.01-2	40.316.005.02-2	22.613.004.01-2	30.413.002.01-2	DAS_E_0004
	3,5	3,4	NR	31.313.004.02-2						
	4	3,8	R	31.323.004.01-2	1,0	41.316.076.01-2	40.316.005.02-2	22.613.004.01-2	30.413.002.01-2	DAS_E_0004
	4	3,8	NR	31.313.004.01-2						
	4	3,8	R	31.323.004.02-2	2,0	41.316.076.01-2	40.316.005.02-2	22.613.004.01-2	30.413.002.01-2	DAS_E_0004
	4	3,8	NR	31.313.004.02-2						
	4,5	4,3	R	31.323.004.01-2	1,0	41.316.076.01-2	40.316.005.02-2	22.613.004.01-2	30.413.002.01-2	DAS_E_0004
	4,5	4,3	NR	31.313.004.01-2						
	4,5	4,3	R	31.323.004.02-2	2,0	41.316.076.01-2	40.316.005.02-2	22.613.004.01-2	30.413.002.01-2	DAS_E_0004
	4,5	4,3	NR	31.313.004.02-2						
	5	4,8	R	31.323.004.01-2	1,0	41.316.076.01-2	40.316.005.02-2	22.613.004.01-2	30.413.002.01-2	DAS_E_0004
	5	4,8	NR	31.313.004.01-2						
	5	4,8	R	31.323.004.02-2	2,0	41.316.076.01-2	40.316.005.02-2	22.613.004.01-2	30.413.002.01-2	DAS_E_0004
5	4,8	NR	31.313.004.02-2							
Uneva	4,1	4,1	R	31.323.024.01-2	0,3	41.320.060.01-2	40.320.008.01-2	22.613.024.01-2	30.413.002.01-2	DAS_E_0024
	4,1	4,1	NR	31.313.024.01-2						
Uneva (Platform Switching)	4,8	4,1	R	31.323.024.01-2	0,3	41.320.060.01-2	40.320.008.01-2		30.413.002.01-2	DAS_E_0024
	4,8	4,1	NR	31.313.024.01-2						
	6	4,1	R	31.323.024.01-2	0,3	41.320.060.01-2	40.320.008.01-2		30.413.002.01-2	DAS_E_0024
	6	4,1	NR	31.313.024.01-2						

MODEL	IMPLANT DIAMETER	PLAT.	TIBASE®			DYNAMIC SCREW	STRAIGHT SCREW	ANALOG	SCANBODY	LIBRARY CODE	
			(R) (NR)	NON ENGAGING ENGAGING	GINGIVAL HEIGHT						
Natea	3,6/4,1/4,8	Narrow	R	31.323.004.01-2	1,0	41.316.076.01-2	40.316.005.02-2	22.613.004.01-2	30.413.002.01-2	DAS_E_0004	
	3,6/4,1/4,8	Narrow	NR	31.313.004.01-2							
	3,6/4,1/4,8	Narrow	R	31.323.004.02-2	2,0	41.316.076.01-2	40.316.005.02-2	22.613.004.01-2	30.413.002.01-2	DAS_E_0004	
	3,6/4,1/4,8	Narrow	NR	31.313.004.02-2							
	3,6/4,1/4,8	Regular	R	31.323.004.01-2	1,0	41.316.076.01-2	40.316.005.02-2	22.613.004.01-2	30.413.002.01-2	DAS_E_0004	
	3,6/4,1/4,8	Regular	NR	31.313.004.01-2							
	3,6/4,1/4,8	Regular	R	31.323.004.02-2	2,0	41.316.076.01-2	40.316.005.02-2	22.613.004.01-2	30.413.002.01-2	DAS_E_0004	
	3,6/4,1/4,8	Regular	NR	31.313.004.02-2							
	6	Wide	R	31.324.005.01-2	1,0	41.320.090.01-2	40.320.005.03-2	22.614.005.01-2	30.413.002.01-2	DAS_E_0005	
	6	Wide	NR	31.314.005.01-2							
	6	Wide	R	31.324.005.02-2	2,0	41.320.090.01-2	40.320.005.03-2	22.614.005.01-2	30.413.002.01-2	DAS_E_0005	
	6	Wide	NR	31.314.005.02-2							
	Aesthetica	4,1	4,8	R	31.323.037.01-2	0,6	41.320.067.01-2	40.320.007.01-2	22.613.037.01-2	30.413.004.01-2	DAS_E_0037
		4,1	4,8	NR	31.313.037.01-2						
	Naturall	3,5	Narrow	R	31.323.004.01-2	1,0	41.316.076.01-2	40.316.005.02-2	22.613.004.01-2	30.413.002.01-2	DAS_E_0004
3,5		Narrow	NR	31.313.004.01-2							
3,5		Narrow	R	31.323.004.02-2	2,0	41.316.076.01-2	40.316.005.02-2	22.613.004.01-2	30.413.002.01-2	DAS_E_0004	
3,5		Narrow	NR	31.313.004.02-2							
4/4,5		Regular	R	31.323.004.01-2	1,0	41.316.076.01-2	40.316.005.02-2	22.613.004.01-2	30.413.002.01-2	DAS_E_0004	
4/4,5		Regular	NR	31.313.004.01-2							
4/4,5		Regular	R	31.323.004.02-2	2,0	41.316.076.01-2	40.316.005.02-2	22.613.004.01-2	30.413.002.01-2	DAS_E_0004	
4/4,5		Regular	NR	31.313.004.02-2							
5		Wide	R	31.324.005.01-2	1,0	41.320.090.01-2	40.320.005.03-2	22.614.005.01-2	30.413.002.01-2	DAS_E_0005	
5		Wide	NR	31.314.005.01-2							
5	Wide	R	31.324.005.02-2	2,0	41.320.090.01-2	40.320.005.03-2	22.614.005.01-2	30.413.002.01-2	DAS_E_0005		
5	Wide	NR	31.314.005.02-2								

Compatible with - GALIMPLANT

MODEL	IMPLANT DIAMETER	PLAT.	TIBASE®			DYNAMIC SCREW	STRAIGHT SCREW	ANALOG	SCANBODY	LIBRARY CODE
			(R) (NR)	NON ENGAGING ENGAGING	GINGIVAL HEIGHT					
External Connection	3,5/4	4	R	31.323.024.01-2	0,3	41.320.065.01-2	40.320.008.01-2	22.613.024.01-2	30.413.002.01-2	DAS_E_0024
	3,5/4	4	NR	31.313.024.01-2						
Internal Connection	4	4	R	31.323.004.01-2	1,0	41.316.076.01-2	40.316.005.02-2	22.613.004.01-2	30.413.002.01-2	DAS_E_0004
	4	4	NR	31.313.004.01-2						
	4	4	R	31.323.004.02-2	2,0	41.316.076.01-2	40.316.005.02-2	22.613.004.01-2	30.413.002.01-2	DAS_E_0004
	4	4	NR	31.313.004.02-2						

Compatible with - GMI (ILERIMPLANT)

MODEL	IMPLANT DIAMETER	PLAT.	TIBASE®			DYNAMIC SCREW	STRAIGHT SCREW	ANALOG	SCANBODY	LIBRARY CODE
			(R) (NR)	NON ENGAGING ENGAGING	GINGIVAL HEIGHT					
Phoenix	3,3/3,75/4	St. 4,1	R	31.323.024.01-2	0,3	41.320.060.01-2	40.320.008.01-2	22.613.024.01-2	30.413.002.01-2	DAS_E_0024
	3,3/3,75/4	St. 4,1	NR	31.313.024.01-2						
Frontier	3,3/3,75/4,25	RP 3,3	R	31.322.040.01-2	0,6	41.318.075.01-2	40.318.003.01-2		30.412.001.01-2	DAS_E_0040
	3,3/3,75/4,25	RP 3,3	NR	31.312.040.01-2						
	4,75/5,75	WP 4,3	R	31.323.041.01-2	0,4	41.318.075.01-2	40.318.003.01-2		30.413.002.01-2	DAS_E_0041
	4,75/5,75	WP 4,3	NR	31.313.041.01-2						

Compatible with - GT MEDICAL

MODEL	IMPLANT DIAMETER	PLAT.	TIBASE®			DYNAMIC SCREW	STRAIGHT SCREW	ANALOG	SCANBODY	LIBRARY CODE
			(R) (NR)	NON ENGAGING ENGAGING	GINGIVAL HEIGHT					
Best Fit Internal Octagon	3,7/4,3/4,8	Regular	R	31.323.037.01-2	0,6	41.320.067.01-2	40.320.007.01-2	22.613.037.01-2	30.413.004.01-2	DAS_E_0037
	3,7/4,3/4,8	Regular	NR	31.313.037.01-2						
Best Fit Internal Hexagon	3,7/4,1/4,3/4,8	Wide	R	31.324.005.01-2	1,0	41.320.090.01-2	40.320.005.03-2	22.614.005.01-2	30.413.002.01-2	DAS_E_0005
	3,7/4,1/4,3/4,8	Wide	NR	31.314.005.01-2						
	3,7/4,1/4,3/4,8	Wide	R	31.324.005.02-2	2,0	41.320.090.01-2	40.320.005.03-2	22.614.005.01-2	30.413.002.01-2	DAS_E_0005
	3,7/4,1/4,3/4,8	Wide	NR	31.314.005.02-2						
Best Fit External Hexagon	3,5	Narrow	R	31.322.023.01-2	0,3	41.316.059.01-2	40.316.008.01-2	22.612.023.01-2	30.412.001.01-2	DAS_E_0023
	3,5	Narrow	NR	31.312.023.01-2						
	4,1	Regular	R	31.323.024.01-2	0,3	41.320.060.01-2	40.320.008.01-2	22.613.024.01-2	30.413.002.01-2	DAS_E_0024
	4,1	Regular	NR	31.313.024.01-2						

Compatible with - HI -TECH

MODEL	IMPLANT DIAMETER	PLAT.	TIBASE®			DYNAMIC SCREW	STRAIGHT SCREW	ANALOG	SCANBODY	LIBRARY CODE
			(R) (NR)	NON ENGAGING ENGAGING	GINGIVAL HEIGHT					
Tapered Self Thread	3,3/3,75	3,5	R	31.322.040.01-2	0,6	41.317.071.01-2	40.317.004.01-2	22.612.040.01-2	30.412.001.01-2	DAS_E_0040
	3,3/3,75	3,5	NR	31.312.040.01-2						
	4,2/5	4,5	R	31.323.041.01-2	0,4	41.317.071.01-2	40.317.004.01-2	22.613.041.01-2	30.413.002.01-2	DAS_E_0041
	4,2/5	4,5	NR	31.313.041.01-2						
Logic Plus	3,5	3,7	R	31.322.040.01-2	0,6	41.317.071.01-2	40.317.004.01-2	22.612.040.01-2	30.412.001.01-2	DAS_E_0040
	3,5	3,7	NR	31.312.040.01-2						
	4,3	3,9	R	31.322.040.01-2	0,6	41.317.071.01-2	40.317.004.01-2	22.612.040.01-2	30.412.001.01-2	DAS_E_0040
	4,3	3,9	NR	31.312.040.01-2						

Compatible with - IHDE DENTAL (IMBIODENT)

MODEL	IMPLANT DIAMETER	PLAT.	TIBASE®			DYNAMIC SCREW	STRAIGHT SCREW	ANALOG	SCANBODY	LIBRARY CODE
			(R) (NR)	NON ENGAGING ENGAGING	GINGIVAL HEIGHT					
Bone Level Plus	3,3	3,3	R	31.322.033.01-2	*	41.316.078.01-2	40.316.007.01-2	22.612.033.01-2	30.412.001.01-2	DAS_E_0033
	3,3	3,3	NR	31.312.033.01-2	1,3					
	3,3	3,3	R	31.322.033.02-2*	2,0	41.316.078.01-2	40.316.007.01-2	22.612.033.01-2	30.412.001.01-2	DAS_E_0033
	3,3	3,3	NR	31.312.033.02-2*						
	4,1	4,1	R	31.323.035.01-2	1,1	41.316.078.01-2	40.316.007.01-2	22.613.035.01-2	30.413.002.01-2	DAS_E_0035
	4,1	4,1	NR	31.313.035.01-2						
	4,1	4,1	R	31.323.035.02-2*	2,0	41.316.078.01-2	40.316.007.01-2	22.613.035.01-2	30.413.002.01-2	DAS_E_0035
	4,1	4,1	NR	31.313.035.02-2*						
	4,8	4,8	R	31.323.035.01-2	1,1	41.316.078.01-2	40.316.007.01-2	22.613.035.01-2	30.413.002.01-2	DAS_E_0035
	4,8	4,8	NR	31.313.035.01-2						
	4,8	4,8	R	31.323.035.02-2*	2,0	41.316.078.01-2	40.316.007.01-2	22.613.035.01-2	30.413.002.01-2	DAS_E_0035
	4,8	4,8	NR	31.313.035.02-2*						

Maximum angulation 20°

Compatible with - IMPLANT DIRECT

MODEL	IMPLANT DIAMETER	PLAT.	TIBASE®			DYNAMIC SCREW	STRAIGHT SCREW	ANALOG	SCANBODY	LIBRARY CODE
			(R) (NR)	NON ENGAGING ENGAGING	GINGIVAL HEIGHT					
RePlus / Replant / Reactive	3,5/3,7/4,2	3,5	R	31.322.026.01-2	0,5	41.318.075.01-2	40.318.008.01-2	22.612.026.01-2	30.412.001.01-2	DAS_E_0026
	3,5/3,7/4,2	3,5	NR	31.312.026.01-2						
	3,5/3,7/4,2	3,5	R	31.322.026.02-2	1,2	41.318.075.01-2	40.318.008.01-2	22.612.026.01-2	30.412.001.01-2	DAS_E_0026
	3,5/3,7/4,2	3,5	NR	31.312.026.02-2						
	4,3/4,7	4,3	R	31.323.027.01-2	0,3	41.320.090.01-2	40.320.008.03-2	22.613.027.01-2	30.413.002.01-2	DAS_E_0027
	4,3/4,7	4,3	NR	31.313.027.01-2						
	4,3/4,7	4,3	R	31.323.027.02-2	1,2	41.320.090.01-2	40.320.008.03-2	22.613.027.01-2	30.413.002.01-2	DAS_E_0027
	4,3/4,7	4,3	NR	31.313.027.02-2						
	5/5,7	5	R	31.324.028.01-2	0,3	41.320.090.01-2	40.320.008.03-2		30.413.002.01-2	DAS_E_0028
	5/5,7	5	NR	31.314.028.01-2						
Legacy	3,7	3,5	R	31.322.040.01-2	0,6	41.317.071.01-2	40.317.004.01-2	22.612.040.01-2	30.412.001.01-2	DAS_E_0040
	3,7	3,5	NR	31.312.040.01-2						
	4,7	4,5	R	31.323.041.01-2	0,4	41.317.071.01-2	40.317.004.01-2	22.613.041.01-2	30.413.002.01-2	DAS_E_0041
	4,7	4,5	NR	31.313.041.01-2						
Swishplant / Swishplus	4,1/4,8	4,8	R	31.323.037.01-2	0,6	41.320.067.01-2	40.320.007.01-2	22.613.037.01-2	30.413.004.01-2	DAS_E_0037
	4,1/4,8	4,8	NR	31.313.037.01-2						
SwishActive	3,3	3	R	31.322.021.01-2	1,5	41.316.073.01-2	40.316.008.02-2	22.612.021.01-2	30.412.001.01-2	DAS_E_0021
	3,3	3	NR	31.312.021.01-2						
	4,1/4,8	3,4	R	31.323.022.01-2	1,3	41.320.075.01-2	40.320.008.02-2	22.613.022.01-2	30.413.002.01-2	DAS_E_0022
	4,1/4,8	3,4	NR	31.313.022.01-2						
	4,1/4,8	3,4	R	31.323.022.02-2	2,0	41.320.075.01-2	40.320.008.02-2	22.613.022.01-2	30.413.002.01-2	DAS_E_0022
4,1/4,8	3,4	NR	31.313.022.02-2							
Interactive	3,2/3,7	3	R	31.322.021.01-2	1,5	41.316.073.01-2	40.316.008.02-2	22.612.021.01-2	30.412.001.01-2	DAS_E_0021
	3,2/3,7	3	NR	31.312.021.01-2						
	4,3/5	3,4	R	31.323.022.01-2	1,3	41.320.075.01-2	40.320.008.02-2	22.613.022.01-2	30.413.002.01-2	DAS_E_0022
	4,3/5	3,4	NR	31.313.022.01-2						
	4,3/5	3,4	R	31.323.022.02-2	2,0	41.320.075.01-2	40.320.008.02-2	22.613.022.01-2	30.413.002.01-2	DAS_E_0022
	4,3/5	3,4	NR	31.313.022.02-2						

Compatible with - JDENTALCARE

MODEL	IMPLANT DIAMETER	PLAT.	TIBASE®			DYNAMIC SCREW	STRAIGHT SCREW	ANALOG	SCANBODY	LIBRARY CODE
			(R) (NR)	NON ENGAGING ENGAGING	GINGIVAL HEIGHT					
JDEvolution/ JDEvolution Plus	3,7	3,7	R	31.322.040.01-2	0,6	41.317.071.01-2	40.317.004.01-2	22.612.040.01-2	30.412.001.01-2	DAS_E_0040
	3,7	3,7	NR	31.312.040.01-2						
	4,3/5	4	R	31.322.040.01-2	0,6	41.317.071.01-2	40.317.004.01-2	22.612.040.01-2	30.412.001.01-2	DAS_E_0040
	4,3/5	4	NR	31.312.040.01-2						
	6	5	R	31.322.040.01-2	0,6	41.317.071.01-2	40.317.004.01-2	22.612.040.01-2	30.412.001.01-2	DAS_E_0040
	6	5	NR	31.312.040.01-2						

Compatible with - KEYSTONE

MODEL	IMPLANT DIAMETER	PLAT.	TIBASE®			DYNAMIC SCREW	STRAIGHT SCREW	ANALOG	SCANBODY	LIBRARY CODE
			(R) (NR)	NON ENGAGING ENGAGING	GINGIVAL HEIGHT					
Restore	3,3	SD 3,3	R	31.322.023.01-2	0,3	41.318.044.01-2			30.412.001.01-2	DAS_E_0023
	3,3	SD 3,3	NR	31.312.023.01-2						
	3,75/4	RD 4,1	R	31.323.024.01-2	0,3	41.320.060.01-2	40.320.008.01-2	22.613.024.01-2	30.413.002.01-2	DAS_E_0024
	3,75/4	RD 4,1	NR	31.313.024.01-2						
Internal TiLobe PrimaConnex	3,3/3,5	3,5	R	31.322.044.01-2	1,0	41.318.065.01-2	40.318.003.01-2		30.412.001.01-2	DAS_E_0044
	3,3/3,5	3,5	NR	31.312.044.01-2						
	4/4,1	4,1	R	31.323.045.01-2	1,0	41.318.065.01-2	40.318.003.01-2		30.413.002.01-2	DAS_E_0045
	4/4,1	4,1	NR	31.313.045.01-2						
	5	5	R	31.324.046.01-2	1,0	41.318.065.01-2	40.318.003.01-2		30.413.002.01-2	DAS_E_0046
5	5	NR	31.314.046.01-2							

Compatible with - KLOCKNER

MODEL	IMPLANT DIAMETER	PLAT.	TIBASE®			DYNAMIC SCREW	STRAIGHT SCREW	ANALOG	SCANBODY	LIBRARY CODE
			(R) (NR)	NON ENGAGING ENGAGING	GINGIVAL HEIGHT					
Essential Cone	3,5/4/4,5	4,5	R	31.323.054.01-2	0,6	41.318.067.01-2			30.413.002.01-2	DAS_E_0054
	3,5/4/4,5	4,5	NR	31.313.054.01-2						
KL	3,5	Narrow	R	31.322.023.01-2	0,3	41.316.059.01-2	40.316.008.01-2	22.612.023.01-2	30.412.001.01-2	DAS_E_0023
	3,5	Narrow	NR	31.312.023.01-2						
	4,1	Regular	R	31.323.024.01-2	0,3	41.320.060.01-2	40.320.003.02-2	22.613.024.01-2	30.413.002.01-2	DAS_E_0024
	4,1	Regular	NR	31.313.024.01-2						
Vega	3,5	NV	R	31.322.082.01-2	1,2	41.316.074.01-2			30.412.001.01-2	DAS_E_0082
	3,5	NV	NR	31.312.082.01-2						
	4/4,5	RV	R	31.323.083.01-2	1,2	41.318.076.01-2			30.413.002.01-2	DAS_E_0083
	4/4,5	RV	NR	31.313.083.01-2						

Compatible with - LEADER

MODEL	IMPLANT DIAMETER	PLAT.	TIBASE®			DYNAMIC SCREW	STRAIGHT SCREW	ANALOG	SCANBODY	LIBRARY CODE
			(R) (NR)	NON ENGAGING ENGAGING	GINGIVAL HEIGHT					
Tixos Internal Hex	3,3	3,5	R	31.322.040.01-2	0,6	41.317.071.01-2	40.317.004.01-2	22.612.040.01-2	30.412.001.01-2	DAS_E_0040
	3,3	3,5	NR	31.312.040.01-2						
	3,75	4	R	31.322.040.01-2	0,6	41.317.071.01-2	40.317.004.01-2	22.612.040.01-2	30.412.001.01-2	DAS_E_0040
	3,75	4	NR	31.312.040.01-2						
Tixos External Hex	3,3/3,75	4,1	R	31.323.024.01-2	0,3	41.320.060.01-2	40.320.008.01-2	22.613.024.01-2	30.413.002.01-2	DAS_E_0024
	3,3/3,75	4,1	NR	31.313.024.01-2						

Compatible with - MEDENTIS

MODEL	IMPLANT DIAMETER	PLAT.	TIBASE®			DYNAMIC SCREW	STRAIGHT SCREW	ANALOG	SCANBODY	LIBRARY CODE
			(R) (NR)	NON ENGAGING ENGAGING	GINGIVAL HEIGHT					
ICX-Templant	3,75	3,75	R	31.323.125.01-2	1,4	41.316.078.01-2	40.316.007.01-2	30.413.002.01-2	DAS_E_0125	
	3,75	3,75	NR	31.313.125.01-2						
	4,1	4,1	R	31.323.125.01-2	1,4	41.316.078.01-2	40.316.007.01-2	30.413.002.01-2	DAS_E_0125	
	4,1	4,1	NR	31.313.125.01-2						
	4,8	4,8	R	31.323.125.01-2	1,4	41.316.078.01-2	40.316.007.01-2	30.413.002.01-2	DAS_E_0125	
	4,8	4,8	NR	31.313.125.01-2						

Compatible with - MEGAGEN

MODEL	IMPLANT DIAMETER	PLAT.	TIBASE®			DYNAMIC SCREW	STRAIGHT SCREW	ANALOG	SCANBODY	LIBRARY CODE
			(R) (NR)	NON ENGAGING ENGAGING	GINGIVAL HEIGHT					
AnyRidge	3,5	Small	R	31.323.015.01-2	1,6	41.318.080.01-2			30.413.002.01-2	DAS_E_0015
	3,5	Small	NR	31.313.015.01-2						
	4/4,5	Regular	R	31.323.015.01-2	1,6	41.318.080.01-2			30.413.002.01-2	DAS_E_0015
	4/4,5	Regular	NR	31.313.015.01-2						
	5/5,5	Wide	R	31.323.015.01-2	1,6	41.318.080.01-2			30.413.002.01-2	DAS_E_0015
	5/5,5	Wide	NR	31.313.015.01-2						
AnyOne Internal	3,5/4/4,5/5/6/7	General	R	31.323.030.01-2	1,1	41.320.079.01-2			30.413.002.01-2	DAS_E_0030
	3,5/4/4,5/5/6/7	General	NR	31.313.030.01-2						
	3,5/4/4,5/5/6/7	General	R	31.323.030.02-2	2,0	41.320.079.01-2			30.413.002.01-2	DAS_E_0030
	3,5/4/4,5/5/6/7	General	NR	31.313.030.02-2						
AnyOne External	3,5	Small 3,5	R	31.322.023.01-2	0,3	41.316.059.01-2	40.316.008.01-2	22.612.023.01-2	30.412.001.01-2	DAS_E_0023
	3,5	Small 3,5	NR	31.312.023.01-2						
	4	Regular 4,1	R	31.323.024.01-2	0,3	41.320.060.01-2	40.320.008.01-2	22.613.024.01-2	30.413.002.01-2	DAS_E_0024
	4	Regular 4,1	NR	31.313.024.01-2						
	4,5	Regular 4,5	R	31.323.024.01-2	0,3	41.320.060.01-2	40.320.008.01-2	22.613.024.01-2	30.413.002.01-2	DAS_E_0024
	4,5	Regular 4,5	NR	31.313.024.01-2						
Mini	3/3,4	Mini 3/3,25	R	31.322.014.01-2	1,2	41.314.067.01-2			30.412.001.01-2	DAS_E_0014
	3/3,4	Mini 3/3,25	NR	31.312.014.01-2						

Compatible with - MICRODENT

MODEL	IMPLANT DIAMETER	PLAT.	TIBASE®			DYNAMIC SCREW	STRAIGHT SCREW	ANALOG	SCANBODY	LIBRARY CODE
			(R) (NR)	NON ENGAGING ENGAGING	GINGIVAL HEIGHT					
Universal	2,8/3,25	3,5	R	31.322.003.01-2	0,3	41.318.044.01-2		30.412.001.01-2	DAS_E_0003	
	2,8/3,25	3,5	NR	31.312.003.01-2						
	3,3/3,5/3,75/4	4,1	R	31.323.024.01-2	0,3	41.320.060.01-2	40.320.008.01-2	22.613.024.01-2	30.413.002.01-2	DAS_E_0024
	3,3/3,5/3,75/4	4,1	NR	31.313.024.01-2						
System	2,8/3,25	3,5	R	31.322.003.01-2	0,3	41.318.044.01-2		30.412.001.01-2	DAS_E_0003	
	2,8/3,25	3,5	NR	31.312.003.01-2						
Ektos	3,7/4,2	3,5	R	31.322.040.01-2	0,6	41.318.075.01-2	40.318.003.01-2	30.412.001.01-2	DAS_E_0040	
	3,7/4,2	3,5	NR	31.312.040.01-2						

Compatible with - MIS

MODEL	IMPLANT DIAMETER	PLAT.	TIBASE®			DYNAMIC SCREW	STRAIGHT SCREW	ANALOG	SCANBODY	LIBRARY CODE
			(R) (NR)	NON ENGAGING ENGAGING	GINGIVAL HEIGHT					
Lance	3,75/4,2	Standard	R	31.323.024.01-2	0,3	41.320.060.01-2	40.320.008.01-2	22.613.024.01-2	30.413.002.01-2	DAS_E_0024
	3,75/4,2	Standard	NR	31.313.024.01-2						
Multi-Unit		General	R	31.323.020.01-2	0,6	41.316.044.01-2			30.413.005.01-2	DAS_E_0020
		Narrow	R	31.322.019.01-2						
	3,3	Narrow	NR	31.312.019.01-2	0,8	41.316.071.01-2			30.412.001.01-2	DAS_E_0019
		Narrow	NR	31.312.019.01-2						
Seven	3,75/4,2	Standard	R	31.322.040.01-2	0,6	41.317.071.01-2	40.317.004.01-2	22.612.040.01-2	30.412.001.01-2	DAS_E_0040
	3,75/4,2	Standard	NR	31.312.040.01-2						
	5/6	Wide	R	31.323.041.01-2	0,4	41.317.071.01-2	40.317.004.01-2	22.613.041.01-2	30.413.002.01-2	DAS_E_0041
	5/6	Wide	NR	31.313.041.01-2						
	3,3	Narrow	R	31.322.019.01-2	0,8	41.316.071.01-2			30.412.001.01-2	DAS_E_0019
	3,3	Narrow	NR	31.312.019.01-2						
M4	3,75/4,2	Standard	R	31.322.040.01-2	0,6	41.317.071.01-2	40.317.004.01-2	22.612.040.01-2	30.412.001.01-2	DAS_E_0040
	3,75/4,2	Standard	NR	31.312.040.01-2						
	5/6	Wide	R	31.323.041.01-2	0,4	41.317.071.01-2	40.317.004.01-2	22.613.041.01-2	30.413.002.01-2	DAS_E_0041
	5/6	Wide	NR	31.313.041.01-2						
	3,3	Narrow	R	31.322.016.01-2	0,8	41.316.071.01-2			30.412.001.01-2	DAS_E_0016
	3,3	Narrow	NR	31.312.016.01-2						
C1	3,75/4,2	Standard	R	31.323.017.01-2	0,7	41.317.073.01-2			30.413.002.01-2	DAS_E_0017
	3,75/4,2	Standard	NR	31.313.017.01-2						
	5	Wide	R	31.324.018.01-2	1,2	41.317.073.01-2			30.413.002.01-2	DAS_E_0018
	5	Wide	NR	31.314.018.01-2						
V3	3,9/4,3/5	Standard	R	31.323.017.01-2	0,7	41.317.073.01-2			30.413.002.01-2	DAS_E_0017
	3,9/4,3/5	Standard	NR	31.313.017.01-2						

Compatible with - MOZO GRAU

MODEL	IMPLANT DIAMETER	PLAT.	TIBASE®			DYNAMIC SCREW	STRAIGHT SCREW	ANALOG	SCANBODY	LIBRARY CODE
			(R) (NR)	NON ENGAGING ENGAGING	GINGIVAL HEIGHT					
MG Osseous	3,3	3,4 Mini	R	31.322.003.01-2	0,3	41.320.065.01-2	40.320.003.02-2	22.612.003.01-2	30.412.001.01-2	DAS_E_0003
	3,3	3,4 Mini	NR	31.312.003.01-2						
	3,4/3,75/4,25	4,1 St.	R	31.323.024.01-2	0,3	41.320.060.01-2	40.320.008.01-2	22.613.024.01-2	30.413.002.01-2	DAS_E_0024
	3,4/3,75/4,25	4,1 St.	NR	31.313.024.01-2						
MG Inhex	3,75/4,25	2,8 St.	R	31.323.004.01-2	1,0	41.316.076.01-2	40.316.005.02-2	22.613.004.01-2	30.413.002.01-2	DAS_E_0004
	3,75/4,25	2,8 St.	NR	31.313.004.01-2						
	3,75/4,25	2,8 St.	R	31.323.004.02-2	2,0	41.316.076.01-2	40.316.005.02-2	22.613.004.01-2	30.413.002.01-2	DAS_E_0004
	3,75/4,25	2,8 St.	NR	31.313.004.02-2						
	5	3,8 Maxi	R	31.324.005.01-2	1,0	41.320.090.01-2	40.320.005.03-2	22.614.005.01-2	30.413.002.01-2	DAS_E_0005
	5	3,8 Maxi	NR	31.314.005.01-2						
	5	3,8 Maxi	R	31.324.005.02-2	2,0	41.320.090.01-2	40.320.005.03-2	22.614.005.01-2	30.413.002.01-2	DAS_E_0005
	5	3,8 Maxi	NR	31.314.005.02-2						

Compatible with - MPI

MODEL	IMPLANT DIAMETER	PLAT.	TIBASE®			DYNAMIC SCREW	STRAIGHT SCREW	ANALOG	SCANBODY	LIBRARY CODE
			(R) (NR)	NON ENGAGING ENGAGING	GINGIVAL HEIGHT					
External Connection HE	3,3/4	4,1	R	31.323.024.01-2	0,3	41.320.060.01-2	40.320.008.01-2	22.613.024.01-2	30.413.002.01-2	DAS_E_0024
	3,3/4	4,1	NR	31.313.024.01-2						
Internal Connection CM	3,5/4	Regular	R	31.323.004.01-2	1,0	41.316.076.01-2	40.316.005.02-2	22.613.004.01-2	30.413.002.01-2	DAS_E_0004
	3,5/4	Regular	NR	31.313.004.01-2						
	3,5/4	Regular	R	31.323.004.02-2	2,0	41.316.076.01-2	40.316.005.02-2	22.613.004.01-2	30.413.002.01-2	DAS_E_0004
	3,5/4	Regular	NR	31.313.004.02-2						
	5	Wide	R	31.324.005.01-2	1,0	41.320.090.01-2	40.320.005.03-2	22.614.005.01-2	30.413.002.01-2	DAS_E_0005
	5	Wide	NR	31.314.005.01-2						
	5	Wide	R	31.324.005.02-2	2,0	41.320.090.01-2	40.320.005.03-2	22.614.005.01-2	30.413.002.01-2	DAS_E_0005
	5	Wide	NR	31.314.005.02-2						

Compatible with - NEOBIOTECH

MODEL	IMPLANT DIAMETER	PLAT.	TIBASE®			DYNAMIC SCREW	STRAIGHT SCREW	ANALOG	SCANBODY	LIBRARY CODE
			(R) (NR)	NON ENGAGING ENGAGING	GINGIVAL HEIGHT					
EB External System	3,5	Narrow	R	31.322.023.01-2	0,3	41.316.059.01-2	40.316.008.01-2	22.612.023.01-2	30.412.001.01-2	DAS_E_0023
	3,5	Narrow	NR	31.312.023.01-2						
IS Implant System	4	Regular 4	R	31.323.030.01-2	1,1	41.320.079.01-2			30.413.002.01-2	DAS_E_0030
	4	Regular 4	NR	31.313.030.01-2						
	4	Regular 4	R	31.323.030.02-2	2,0	41.320.079.01-2			30.413.002.01-2	DAS_E_0030
	4	Regular 4	NR	31.313.030.02-2						
	4,5	Regular 4,5	R	31.323.030.01-2	1,1	41.320.079.01-2			30.413.002.01-2	DAS_E_0030
		Regular 4,5	NR	31.313.030.01-2						
	4,5	Regular 4,5	R	31.323.030.02-2	2,0	41.320.079.01-2			30.413.002.01-2	DAS_E_0030
		Regular 4,5	NR	31.313.030.02-2						
	5	Wide 5	R	31.323.030.01-2	1,1	41.320.079.01-2			30.413.002.01-2	DAS_E_0030
	5	Wide 5	NR	31.313.030.01-2						
	5	Wide 5	R	31.323.030.02-2	2,0	41.320.079.01-2			30.413.002.01-2	DAS_E_0030
		5	Wide 5	NR						
IS Implant System Multi-Unit	4,8		R	31.323.025.01-2	0,3	41.314.039.01-2	40.314.008.01-2	22.613.025.01-2	30.413.005.01-2	DAS_E_0025

Compatible with - NEODENT

MODEL	IMPLANT DIAMETER	PLAT.	TIBASE®			DYNAMIC SCREW	STRAIGHT SCREW	ANALOG	SCANBODY	LIBRARY CODE
			(R) (NR)	NON ENGAGING ENGAGING	GINGIVAL HEIGHT					
Cono Morse Mini Pilar		Regular	R	31.323.025.01-2	0,3	41.314.039.01-2	40.314.008.01-2	22.613.025.01-2	30.413.005.01-2	DAS_E_0025
	3,75/4	4,1	R	31.323.024.01-2	0,3	41.320.070.01-2*	40.320.008.01-2	22.613.024.01-2	30.413.002.01-2	DAS_E_0024
Smart HE	3,75/4	4,1	NR	31.313.024.01-2						

*Use 41.320.060.01-2 screw for original analog

Compatible with - NEOSS

MODEL	IMPLANT DIAMETER	PLAT.	TIBASE®			DYNAMIC SCREW	STRAIGHT SCREW	ANALOG	SCANBODY	LIBRARY CODE
			(R) (NR)	NON ENGAGING ENGAGING	GINGIVAL HEIGHT					
ProActive Straight/Tapered	3,5 Green	ProActive	R	31.322.047.01-2	0,6	41.320.074.01-2	40.320.007.02-2		30.412.001.01-2	DAS_E_0047
	3,5 Green	ProActive	NR	31.312.047.01-2						
	4 Yellow	ProActive	R	31.322.047.01-2	0,6	41.320.074.01-2	40.320.007.02-2		30.412.001.01-2	DAS_E_0047
	4 Yellow	ProActive	NR	31.312.047.01-2						
	4,5 Blue	ProActive	R	31.323.048.01-2	0,6	41.320.074.01-2	40.320.007.02-2		30.413.002.01-2	DAS_E_0048
	4,5 Blue	ProActive	NR	31.313.048.01-2						
	5 Peach	ProActive	R	31.323.048.01-2	0,6	41.320.074.01-2	40.320.007.02-2		30.413.002.01-2	DAS_E_0048
	5 Peach	ProActive	NR	31.313.048.01-2						
	5,5 Lilac	ProActive	R	31.323.048.01-2	0,6	41.320.074.01-2	40.320.007.02-2		30.413.002.01-2	DAS_E_0048
	5,5 Lilac	ProActive	NR	31.313.048.01-2						

Compatible with - NOBEL BIOCARE

MODEL	IMPLANT DIAMETER	PLAT.	TIBASE®			DYNAMIC SCREW	STRAIGHT SCREW	ANALOG	SCANBODY	LIBRARY CODE
			(R) (NR)	NON ENGAGING ENGAGING	GINGIVAL HEIGHT					
Branemark	3,3	Narrow	R	31.322.023.01-2	0,3	41.316.059.01-2	40.316.008.01-2	22.612.023.01-2	30.412.001.01-2	DAS_E_0023
	3,3	Narrow	NR	31.312.023.01-2						
	3,75/4	Regular	R	31.323.024.01-2	0,3	41.320.060.01-2	40.320.008.01-2	22.613.024.01-2	30.413.002.01-2	DAS_E_0024
	3,75/4	Regular	NR	31.313.024.01-2						
Multi-Unit		Regular	R	31.323.025.01-2	0,3	41.314.039.01-2	40.314.008.01-2	22.613.025.01-2	30.413.005.01-2	DAS_E_0025
	3,5	Narrow	R	31.322.026.01-2	0,5	41.318.075.01-2	40.318.008.01-2	22.612.026.01-2	30.412.001.01-2	DAS_E_0026
	3,5	Narrow	NR	31.312.026.01-2						
	3,5	Narrow	R	31.322.026.02-2	1,2	41.318.075.01-2	40.318.008.01-2	22.612.026.01-2	30.412.001.01-2	DAS_E_0026
	3,5	Narrow	NR	31.312.026.02-2						
Replace	4,3	Regular	R	31.323.027.01-2	0,3	41.320.090.01-2	40.320.008.03-2	22.613.027.01-2	30.413.002.01-2	DAS_E_0027
	4,3	Regular	NR	31.313.027.01-2						
	4,3	Regular	R	31.323.027.02-2	1,2	41.320.090.01-2	40.320.008.03-2	22.613.027.01-2	30.413.002.01-2	DAS_E_0027
	4,3	Regular	NR	31.313.027.02-2						
	5	Wide	R	31.324.028.01-2	0,3	41.320.090.01-2	40.320.008.03-2	22.614.005.01-2	30.413.002.01-2	DAS_E_0028
	5	Wide	NR	31.314.028.01-2						
Active	3,5	Narrow	R	31.322.021.01-2	1,5	41.316.073.01-2	40.316.008.02-2	22.612.021.01-2	30.412.001.01-2	DAS_E_0021
	3,5	Narrow	NR	31.312.021.01-2						
	4,3/5	Regular	R	31.323.022.01-2	1,3	41.320.075.01-2	40.320.008.02-2	22.613.022.01-2	30.413.002.01-2	DAS_E_0022
	4,3/5	Regular	NR	31.313.022.01-2						
	4,3/5	Regular	R	31.323.022.02-2	2,0	41.320.075.01-2	40.320.008.02-2	22.613.022.01-2	30.413.002.01-2	DAS_E_0022
	4,3/5	Regular	NR	31.313.022.02-2						
	5,5	Wide	R	31.324.124.01-2	1,4	41.320.075.01-2	40.320.008.02-2		30.414.003.01-2	DAS_E_0124
	5,5	Wide	NR	31.314.124.01-2						

Compatible with - NORMON

MODEL	IMPLANT DIAMETER	PLAT.	TIBASE®			DYNAMIC SCREW	STRAIGHT SCREW	ANALOG	SCANBODY	LIBRARY CODE
			(R) (NR)	NON ENGAGING ENGAGING	GINGIVAL HEIGHT					
Normoimplant HE	3,25/3,75/4,25/4,75	4,1	R	31.323.024.01-2	0,3	41.320.060.01-2	40.320.008.01-2	22.613.024.01-2	30.413.002.01-2	DAS_E_0024
	3,25/3,75/4,25/4,75	4,1	NR	31.313.024.01-2						

Compatible with - OSSEOLIFE (ZIACOM)

MODEL	IMPLANT DIAMETER	PLAT.	TIBASE®			DYNAMIC SCREW	STRAIGHT SCREW	ANALOG	SCANBODY	LIBRARY CODE
			(R) (NR)	NON ENGAGING ENGAGING	GINGIVAL HEIGHT					
OEX	3,75/4,25	RP 4,1	R	31.323.024.01-2	0,3	41.320.060.01-2	40.320.008.01-2	22.613.024.01-2	30.413.002.01-2	DAS_E_0024
	3,75/4,25	RP 4,1	NR	31.313.024.01-2						

Compatible with - OSSTEM IMPLANT

MODEL	IMPLANT DIAMETER	PLAT.	TIBASE®			DYNAMIC SCREW	STRAIGHT SCREW	ANALOG	SCANBODY	LIBRARY CODE
			(R) (NR)	NON ENGAGING ENGAGING	GINGIVAL HEIGHT					
TS	3,5	Mini	R	31.322.029.01-2*	1,2	41.316.094.01-2	40.316.005.04-2		30.412.001.01-2	DAS_E_0029
	3,5	Mini	NR	31.312.029.01-2*						
	4/4,5/5/6/7	Regular	R	31.323.030.01-2	1,1	41.320.079.01-2			30.413.002.01-2	DAS_E_0030
	4/4,5/5/6/7	Regular	NR	31.313.030.01-2						
	4/4,5/5/6/7	Regular	R	31.323.030.02-2	2,0	41.320.079.01-2			30.413.002.01-2	DAS_E_0030
	4/4,5/5/6/7	Regular	NR	31.313.030.02-2						
US	3,3/3,5	Mini 3,5	R	31.322.023.01-2	0,3	41.316.059.01-2	40.316.008.01-2	22.612.023.01-2	30.412.001.01-2	DAS_E_0023
	3,3/3,5	Mini 3,5	NR	31.312.023.01-2						
	3,75/4/4,5	Regular 4,1	R	31.323.024.01-2	0,3	41.320.060.01-2	40.320.008.01-2	22.613.024.01-2	30.413.002.01-2	DAS_E_0024
	3,75/4/4,5	Regular 4,1	NR	31.313.024.01-2						

Maximum angulation 20°

Compatible with - OSTEOPUS

MODEL	IMPLANT DIAMETER	PLAT.	TIBASE®			DYNAMIC SCREW	STRAIGHT SCREW	ANALOG	SCANBODY	LIBRARY CODE
			(R) (NR)	NON ENGAGING ENGAGING	GINGIVAL HEIGHT					
She	3,45	3,45	R	31.322.009.01-2	0,3	41.320.065.01-2	40.320.003.01-2	22.612.009.01-2	30.412.001.01-2	DAS_E_0009
	3,45	3,45	NR	31.312.009.01-2						
	3,75 / 4	4	R	31.323.024.01-2	0,3	41.320.065.01-2	40.320.008.01-2	22.613.024.01-2	30.413.002.1-2	DAS_E_0024
	3,75 / 4	4	NR	31.313.024.01-2						
Shi	3,3 / 3,75 / 4,2	3,5	R	31.322.040.01-2	0,6	41.317.071.01-2	40.317.004.01-2	22.612.040.01-2	30.412.001.01-2	DAS_E_0040
	3,3 / 3,75 / 4,2	3,5	NR	31.312.040.01-2						

Compatible with - PHIBO

MODEL	IMPLANT DIAMETER	PLAT.	TIBASE®			DYNAMIC SCREW	STRAIGHT SCREW	ANALOG	SCANBODY	LIBRARY CODE
			(R) (NR)	NON ENGAGING ENGAGING	GINGIVAL HEIGHT					
TSH/BNT Serie 3	3,6	4	R	31.323.024.01-2	0,3	41.320.060.01-2	40.320.003.02-2	22.613.024.01-2	30.413.002.01-2	DAS_E_0024
	3,6	4	NR	31.313.024.01-2						
TSH/BNT Serie 4	4,2	4	R	31.323.024.01-2	0,3	41.320.060.01-2	40.320.003.02-2	22.613.024.01-2	30.413.002.01-2	DAS_E_0024
	4,2	4	NR	31.313.024.01-2						

Compatible with - PROCLINIC

MODEL	IMPLANT DIAMETER	PLAT.	TIBASE®			DYNAMIC SCREW	STRAIGHT SCREW	ANALOG	SCANBODY	LIBRARY CODE
			(R) (NR)	NON ENGAGING ENGAGING	GINGIVAL HEIGHT					
Cylindrical External Conical	3,75/4,25//3,5/4	4,1 Standar	R	31.323.024.01-2	0,3	41.320.060.01-2	40.320.008.01-2	22.613.024.01-2	30.413.002.01-2	DAS_E_0024
	3,75/4,25//3,5/4	4,1 Standar	NR	31.313.024.01-2						
Cylindrical Internal Conical	3,3/3,75/4,25/5//3,5/4/5	3,5	R	31.322.040.01-2	0,6	41.317.071.01-2	40.317.004.01-2	22.612.040.01-2	30.412.001.01-2	DAS_E_0040
	3,3/3,75/4,25/5//3,5/4/5	3,5	NR	31.312.040.01-2						
SP Octa	3,3/4,1/4,8	4,8	R	31.323.037.01-2	0,6	41.320.067.01-2	40.320.007.01-2	22.613.037.01-2	30.413.004.01-2	DAS_E_0037
	3,3/4,1/4,8	4,8	NR	31.313.037.01-2						

Compatible with - RADHEX

MODEL	IMPLANT DIAMETER	PLAT.	TIBASE®			DYNAMIC SCREW	STRAIGHT SCREW	ANALOG	SCANBODY	LIBRARY CODE
			(R) (NR)	NON ENGAGING ENGAGING	GINGIVAL HEIGHT					
PHE	3,5	3,5	R	31.322.023.01-2	0,3	41.316.076.01-2	40.316.008.01-2	30.412.001.01-2	DAS_E_0023	
	3,5	3,5	NR	31.312.023.01-2						
	4/4,5/5	4,1	R	31.323.024.01-2	0,3	41.320.065.01-2	40.320.008.01-2	22.613.024.01-2	30.413.002.01-2	DAS_E_0024
	4/4,5/5	4,1	NR	31.313.024.01-2						
PHI	3,75	3,5	R	31.322.040.01-2	0,6	41.318.075.01-2	40.318.003.01-2	22.612.040.01-2	30.412.001.01-2	DAS_E_0040
	3,75	3,5	NR	31.312.040.01-2						
	4,5/5	4,5	R	31.323.041.01-2	0,4	41.318.075.01-2	40.318.003.01-2	22.613.041.01-2	30.413.002.01-2	DAS_E_0041
	4,5/5	4,5	NR	31.313.041.01-2						

Compatible with - SGS

MODEL	IMPLANT DIAMETER	PLAT.	TIBASE®			DYNAMIC SCREW	STRAIGHT SCREW	ANALOG	SCANBODY	LIBRARY CODE
			(R) (NR)	NON ENGAGING ENGAGING	GINGIVAL HEIGHT					
P1	3,2/3,75/4,2/5/6	3,75	R	31.322.040.01-2	0,6	41.317.071.01-2	40.317.004.01-2	22.612.040.01-2	30.412.001.01-2	DAS_E_0040
	3,2/3,75/4,2/5/6	3,75	NR	31.312.040.01-2						
P7	3,2/3,75/4,2/4,5/5/6	3,75	R	31.322.040.01-2	0,6	41.317.071.01-2	40.317.004.01-2	22.612.040.01-2	30.412.001.01-2	DAS_E_0040
	3,2/3,75/4,2/4,5/5/6	3,75	NR	31.312.040.01-2						

Compatible with - SIGNO VINCES

MODEL	IMPLANT DIAMETER	PLAT.	TIBASE®			DYNAMIC SCREW	STRAIGHT SCREW	ANALOG	SCANBODY	LIBRARY CODE
			(R) (NR)	NON ENGAGING ENGAGING	GINGIVAL HEIGHT					
Duo	4,6	4,1	R	31.323.024.01-2	0,3	41.320.074.01-2*	40.320.008.01-2	30.413.002.01-2	DAS_E_0024	
	4,6	4,1	NR	31.313.024.01-2						
Integra	3,75/4	4,1	NR	31.313.024.01-2	0,3	41.320.070.01-2*	40.320.008.01-2	30.413.002.01-2	DAS_E_0024	
	4,5	CM3,8	R	31.323.004.01-2						
Compact	4,5	CM3,8	NR	31.313.004.01-2	1,0	41.316.076.01-2	40.316.005.02-2	22.613.004.01-2	30.413.002.01-2	DAS_E_0004
	4,5	CM3,8	R	31.323.004.02-2						
	4,5	CM3,8	R	31.313.004.02-2	2,0	41.316.076.01-2	40.316.005.02-2	22.613.004.01-2	30.413.002.01-2	DAS_E_0004
	4,5	CM3,8	NR	31.313.004.02-2						
Duocon	3,8	CM3,8	R	31.323.004.01-2	1,0	41.316.076.01-2	40.316.005.02-2	22.613.004.01-2	30.413.002.01-2	DAS_E_0004
	3,8	CM3,8	NR	31.313.004.01-2						
	3,8	CM3,8	R	31.323.004.02-2	2,0	41.316.076.01-2	40.316.005.02-2	22.613.004.01-2	30.413.002.01-2	DAS_E_0004
	3,8	CM3,8	NR	31.313.004.02-2						
	4,6/5,5	CM4,6	R	31.324.005.01-2	1,0	41.320.090.01-2	40.320.005.03-2	22.614.005.01-2	30.413.002.01-2	DAS_E_0005
	5,6/5,5	CM4,6	NR	31.314.005.01-2						
	4,6/5,5	CM4,6	R	31.324.005.02-2	2,0	41.320.090.01-2	40.320.005.03-2	22.614.005.01-2	30.413.002.01-2	DAS_E_0005
	5,6/5,5	CM4,6	NR	31.314.005.02-2						

*Use 41.320.060.01-2 screw for original analog

Compatible with - SOUTHERN IMPLANTS

MODEL	IMPLANT DIAMETER	PLAT.	TIBASE®			DYNAMIC SCREW	STRAIGHT SCREW	ANALOG	SCANBODY	LIBRARY CODE
			(R) (NR)	NON ENGAGING ENGAGING	GINGIVAL HEIGHT					
Tri-Nex	3,5	3,5	R	31.322.026.01-2	0,5	41.318.075.01-2	40.318.008.01-2	22.612.026.01-2	30.412.001.01-2	DAS_E_0026
	3,5	3,5	NR	31.312.026.01-2						
	3,5	3,5	R	31.322.026.02-2	1,2	41.318.075.01-2	40.318.008.01-2	22.612.026.01-2	30.412.001.01-2	DAS_E_0026
	3,5	3,5	NR	31.312.026.02-2						
	4,3	4,3	R	31.323.027.01-2	0,3	41.320.090.01-2	40.320.008.03-2	22.613.027.01-2	30.413.002.01-2	DAS_E_0027
	4,3	4,3	NR	31.313.027.01-2						
	4,3	4,3	R	31.323.027.02-2	1,2	41.320.090.01-2	40.320.008.03-2	22.613.027.01-2	30.413.002.01-2	DAS_E_0027
	4,3	4,3	NR	31.313.027.02-2						
	5	5	R	31.324.028.01-2	0,3	41.320.090.01-2	40.320.008.03-2	22.614.005.01-2	30.413.002.01-2	DAS_E_0028
	5	5	NR	31.314.028.01-2						
IT Connection	3,3/4/4,1/4,9/5	4,8	R	31.323.037.01-2	0,6	41.320.067.01-2	40.320.007.01-2	22.613.037.01-2	30.413.004.01-2	DAS_E_0037
	3,3/4/4,1/4,9	4,8	NR	31.313.037.01-2						
External Hex	3,25	3,4	R	31.322.003.01-2	0,3	41.320.065.01-2	40.320.003.02-2		30.412.001.01-2	DAS_E_0003
	3,75/4	4,1	R	31.323.024.01-2	0,3	41.320.060.01-2	40.320.003.02-2	22.613.024.01-2		DAS_E_0024
	3,75/4	4,1	NR	31.313.024.01-2						
Deep Conical	3,5/4	2,95/3,1	R	31.323.004.01-2	1,0	41.316.076.01-2	40.316.005.02-2	22.613.004.01-2	30.413.002.01-2	DAS_E_0004
	3,5/4	2,95/3,1	NR	31.313.004.01-2						
	3,5/4	2,95/3,1	R	31.323.004.02-2	2,0	41.316.076.01-2	40.316.005.02-2	22.613.004.01-2	30.413.002.01-2	DAS_E_0004
	3,5/4	2,95/3,1	NR	31.313.004.02-2						
	5	4,1	R	31.324.005.01-2	1,0	41.320.090.01-2	40.320.005.03-2	22.614.005.01-2	30.413.002.01-2	DAS_E_0005
	5	4,1	NR	31.314.005.01-2						
	5	4,1	R	31.324.005.02-2	2,0	41.320.090.01-2	40.320.005.03-2	22.614.005.01-2	30.413.002.01-2	DAS_E_0005
5	4,1	NR	31.314.005.02-2							
Internal Hex	3,75/4,2/5	Universal	R	31.322.040.01-2	0,6	41.317.071.01-2	40.317.004.01-2	22.612.040.01-2	30.412.001.01-2	DAS_E_0040
	3,75/4,2/5	Universal	NR	31.312.040.01-2						
Compact Conical	4,8	4,8	R	31.323.025.01-2	0,3	41.314.039.01-2	40.314.008.01-2	22.613.025.01-2	30.413.005.01-2	DAS_E_0025

Compatible with - STRAUMANN

MODEL	IMPLANT DIAMETER	PLAT.	TIBASE®			DYNAMIC SCREW	STRAIGHT SCREW	ANALOG	SCANBODY	LIBRARY CODE
			(R) (NR)	NON ENGAGING ENGAGING	GINGIVAL HEIGHT					
Internal Octagon	3,3/4,1/4,8	Regular 4,8	R	31.323.037.01-2	0,6	41.320.067.01-2	40.320.007.01-2		30.413.004.01-2	DAS_E_0037
	3,3/4,1/4,8	Regular 4,8	NR	31.313.037.01-2						
Bone Level	3,3	NC- 3,3	R	31.322.033.01-2	1,3	41.316.078.01-2	40.316.007.01-2	22.612.033.01-2	30.412.001.01-2	DAS_E_0033
	3,3	NC-3,3	NR	31.312.033.01-2						
	3,3	NC- 3,3	R	31.322.033.02-2*	2,0	41.316.078.01-2	40.316.007.01-2	22.612.033.01-2	30.412.001.01-2	DAS_E_0033
	3,3	NC-3,3	NR	31.312.033.02-2*						
	4,1	RC-4,1	R	31.323.035.01-2	1,1	41.316.078.01-2	40.316.007.01-2	22.613.035.01-2	30.413.002.01-2	DAS_E_0035
	4,1	RC-4,1	NR	31.313.035.01-2						
	4,1	RC-4,1	R	31.323.035.02-2*	2,0	41.316.078.01-2	40.316.007.01-2	22.613.035.01-2	30.413.002.01-2	DAS_E_0035
	4,1	RC-4,1	NR	31.313.035.02-2*						
	4,8	RC-4,8	R	31.323.035.01-2	1,1	41.316.078.01-2	40.316.007.01-2	22.613.035.01-2	30.413.002.01-2	DAS_E_0035
	4,8	RC-4,8	NR	31.313.035.01-2						
4,8	RC-4,8	R	31.323.035.02-2*	2,0	41.316.078.01-2	40.316.007.01-2	22.613.035.01-2	30.413.002.01-2	DAS_E_0035	
4,8	RC-4,8	NR	31.313.035.02-2*							

Maximum angulation 20°

Compatible with - SYBRON IMPLANT SOLUTIONS

MODEL	IMPLANT DIAMETER	PLAT.	TIBASE®			DYNAMIC SCREW	STRAIGHT SCREW	ANALOG	SCANBODY	LIBRARY CODE
			(R) (NR)	NON ENGAGING ENGAGING	GINGIVAL HEIGHT					
Endopore (Innova)	4,1	4,1	R	31.323.024.01-2	0,3	41.320.060.01-2	40.320.008.01-2	22.613.024.01-2	30.413.002.01-2	DAS_E_0024
	4,1	4,1	NR	31.313.024.01-2						

Compatible with - TITANIUM-FIX

MODEL	IMPLANT DIAMETER	PLAT.	TIBASE®			DYNAMIC SCREW	STRAIGHT SCREW	ANALOG	SCANBODY	LIBRARY CODE
			(R) (NR)	NON ENGAGING ENGAGING	GINGIVAL HEIGHT					
b-fix	3,5/4	Regular	R	31.323.004.01-2	1,0	41.316.076.01-2	40.316.005.02-2	22.613.004.01-2	30.413.002.01-2	DAS_E_0004
	3,5/4	Regular	NR	31.313.004.01-2						
	3,5/4	Regular	R	31.323.004.02-2	2,0	41.316.076.01-2	40.316.005.02-2	22.613.004.01-2	30.413.002.01-2	DAS_E_0004
	3,5/4	Regular	NR	31.313.004.02-2						
	4,5/5	Larga	R	31.324.005.01-2	1,0	41.320.090.01-2	40.320.005.03-2	22.614.005.01-2	30.413.002.01-2	DAS_E_0005
	4,5/5	Larga	NR	31.314.005.01-2						
	4,5/5	Larga	R	31.324.005.02-2	2,0	41.320.090.01-2	40.320.005.03-2	22.614.005.01-2	30.413.002.01-2	DAS_E_0005
	4,5/5	Larga	NR	31.314.005.02-2						

Compatible with - TRI DENTAL IMPLANTS

MODEL	IMPLANT DIAMETER	PLAT.	TIBASE®			DYNAMIC SCREW	STRAIGHT SCREW	ANALOG	SCANBODY	LIBRARY CODE
			(R) (NR)	NON ENGAGING ENGAGING	GINGIVAL HEIGHT					
TRI-Vent	3,75/4,1/4,7	3,5	R	31.322.040.01-2	0,6	41.317.071.01-2	40.317.004.01-2	22.612.040.01-2	30.412.001.01-2	DAS_E_0040
	3,75/4,1/4,7	3,5	NR	31.312.042.01-2						

Compatible with - TRINON

MODEL	IMPLANT DIAMETER	PLAT.	TIBASE®			DYNAMIC SCREW	STRAIGHT SCREW	ANALOG	SCANBODY	LIBRARY CODE
			(R) (NR)	NON ENGAGING ENGAGING	GINGIVAL HEIGHT					
Q2	3,5/3,75/4,5	4	R	31.323.024.01-2	0,3	41.320.060.01-2	40.320.008.01-2	22.613.024.01-2	30.413.002.01-2	DAS_E_0024
	3,5/3,75/4,5	4	NR	31.313.024.01-2						
QK	4	4,8	R	31.323.037.01-2	0,6	41.320.067.01-2	40.320.007.01-2	22.613.037.01-2	30.413.004.01-2	DAS_E_0037
	4	4,8	NR	31.313.037.01-2						

Compatible with - XIVE

MODEL	IMPLANT DIAMETER	PLAT.	TIBASE®			DYNAMIC SCREW	STRAIGHT SCREW	ANALOG	SCANBODY	LIBRARY CODE
			(R) (NR)	NON ENGAGING ENGAGING	GINGIVAL HEIGHT					
Xive	3,4	3,4	R	31.322.038.01-2	0,7	41.316.081.01-2		30.412.001.01-2	DAS_E_0038	
	3,4	3,4	NR	31.312.038.01-2						
	3,8	3,8	R	31.323.039.01-2	0,7	41.316.081.01-2		30.413.002.01-2	DAS_E_0039	
	3,8	3,8	NR	31.313.039.01-2						

Compatible with - ZIMMER

MODEL	IMPLANT DIAMETER	PLAT.	TIBASE®			DYNAMIC SCREW	STRAIGHT SCREW	ANALOG	SCANBODY	LIBRARY CODE	
			(R) (NR)	NON ENGAGING ENGAGING	GINGIVAL HEIGHT						
Screw-Vent	3,7/4,1	3,5	R	31.322.040.01-2	0,6	41.317.071.01-2	40.317.004.01-2	22.612.040.01-2	30.412.001.01-2	DAS_E_0040	
	3,4/4,1	3,5	NR	31.312.040.01-2							
	3,4/4,1	3,5	NR (ZIO)	31.312.042.01-2	0,6	41.317.071.01-2	40.317.004.01-2	22.612.040.01-2	30.412.001.01-2	DAS_E_0042	
	4,7	4,5	R	31.323.041.01-2							
	4,7	4,5	NR	31.313.041.01-2	0,4	41.317.071.01-2	40.317.004.01-2	22.613.041.01-2	30.413.002.01-2	DAS_E_0041	
	4,7	4,5	NR (ZIO)	31.313.043.01-2							
	6	5,7	R	31.324.080.01-2	0,4	41.317.071.01-2	40.317.004.01-2		30.414.003.01-2	DAS_E_0080	
	6	5,7	NR	31.314.080.01-2							
	Swiss-Plus	3,7/4,1/4,8	4,8	R	31.323.037.01-2	0,6	41.320.067.01-2	40.320.007.01-2	22.613.037.01-2	30.413.004.01-2	DAS_E_0037
		3,7/4,1/4,8	4,8	NR	31.313.037.01-2						

DYNAMIC SCREWS

They cover all the thread metrics available on the market. They are used with the 3.0 Dynamic Abutment®, the 3.0 Dynamic TiBase® or milled structures with an angled screw channel of up to 30°. There are several lengths for each metric to ease adaptation to the structures. All of them are made of grade 5 titanium.



DYNAMIC SCREWDRIVER

Screwdriver with hexalobular head, exclusively to the 3.0 Dynamic Abutment® system; lengths: 18, 24, 32mm. Our screwdriver has a contra-angle connection to make it easier to use with a dynamometer or manual ratchet, with the corresponding adaptors or handles.

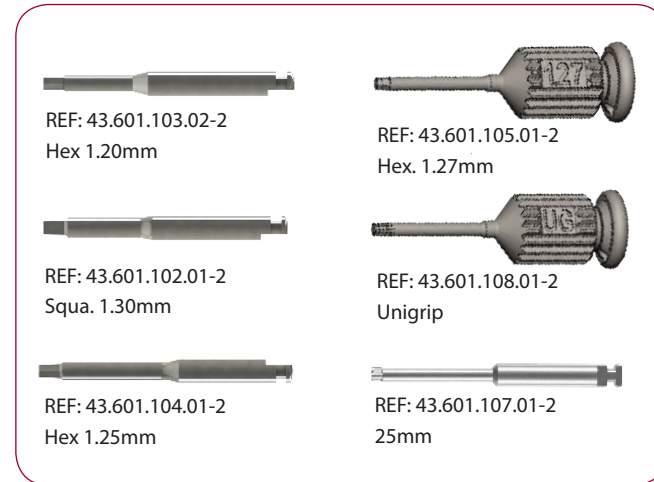


STRAIGHT SCREWS

They cover all the thread metrics available on the market. We have several lengths for each metric to make the adaptation to the milled structures easier. Made of grade 5 Titanium.



SCREWDRIVERS FOR STRAIGHT SCREWS



COMPLEMENTS



Manual handle
Made of stainless steel. They are used to connect screwdriver bits with the contra-angle connection



Large manual handle for laboratory Ref. 49.601.000.03-2
Ideal to manipulate models in the laboratory. Length 55.65mm.

Manual handle for clinic
Ref. 49.601.000.01-2
Clinic handle: used to position the prosthesis in the mouth prior to torque control in the clinic. Length: 15.65mm.



Universal manual torque wrench prosthetic
Ref. 11.990.990.07-2
Torque wrench. 4mm square connection. Torque 10-35N.c

Manual torque wrench adapter prosthetic
Piece to connect the screwdriver with contra-angle connection to the torque wrench.



Universal Manual torque wrench adapter
Ref. 49.604.000.05-2
4mm Square connection



Straumann Manual torque wrench adapter
Ref. 49.604.000.07-2
Straumann connection



Nobel Biocare Manual torque wrench adapter
Ref. 49.604.000.08-2

ANALOGS

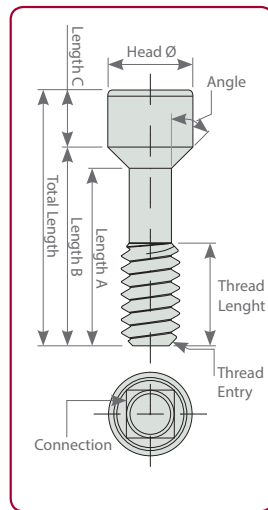
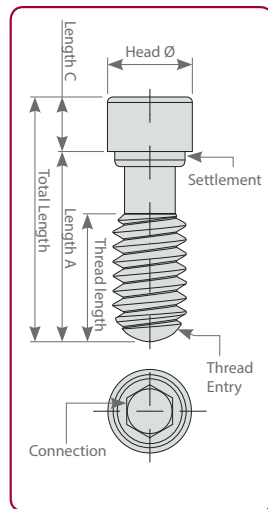
Stainless steel implant analog. It reproduces the implant connection



DYNAMIC SCREWS TECHNICAL SPECIFICATIONS



REFERENCE	METRIC	TORQUE	TOTAL LENGHT	THREAD LENGHT	A LENGHT	B LENGHT	C LENGHT	HEAD DIAMETER	SEAT	ANGLE	THREAD ENTRY	CONNECTION
41.314.039.01-2	1,4	15 N·cm	3,90	1,80	2,10	-	1,80	2,40	staight	-	45° Chamfer	Hexalobular 1,70
41.314.040.01-2	1,4	15 N·cm	4,00	1,85	2,00	2,78	1,22	2,30	conical	30°	45° Chamfer	
41.314.045.01-2	1,4	15 N·cm	4,50	2,30	2,50	3,28	1,22	2,30	conical	30°	45° Chamfer	
41.314.052.01-2	1,4	15 N·cm	5,20	2,90	3,40	-	1,80	2,30	staight	-	45° Chamfer	
41.314.064.01-2	1,4	15 N·cm	6,40	2,20	4,21	5,15	1,25	2,30	conical	25°	45° Chamfer	
41.314.067.01-2	1,4	15 N·cm	6,70	2,31	5,00	5,45	1,25	2,30	conical	45°	45° Chamfer	
41.314.070.01-2	1,4	15 N·cm	7,00	2,30	5,39	5,65	1,61	2,30	conical	60°	45° Chamfer	
41.314.074.01-2	1,4	15 N·cm	7,40	3,55	5,00	5,99	1,41	2,30	conical	25°	45° Chamfer	
41.316.044.01-2	1,6	20 N·cm	4,40	2,50	2,90	-	1,50	2,30	staight	-	Semi-sphere	
41.316.059.01-2	1,6	20 N·cm	5,90	3,00	4,40	-	1,50	2,30	staight	-	Semi-sphere	
41.316.071.01-2	1,6	20 N·cm	7,10	2,80	5,20	5,53	1,57	2,30	conical	60°	45° Chamfer	
41.316.072.01-2	1,6	20 N·cm	7,20	3,50	5,20	5,85	1,35	2,30	conical	30°	45° Chamfer	
41.316.073.01-2	1,6	20 N·cm	7,30	2,20	4,87	5,56	1,74	2,30	conical	35°	45° Chamfer	
41.316.074.01-2	1,6	20 N·cm	7,40	2,70	5,50	6,00	1,40	2,30	conical	45°	45° Chamfer	
41.316.076.01-2	1,6	20 N·cm	7,60	3,60	6,10	-	1,50	2,30	staight	-	Semi-sphere	
41.316.078.01-2	1,6	20 N·cm	7,80	2,00	5,36	7,03	0,81	2,30	conical	15°	45° Chamfer	
41.316.081.01-2	1,6	20 N·cm	8,10	3,00	6,35	6,72	1,38	2,30	conical	45°	45° Chamfer	
41.316.084.01-2	1,6	20 N·cm	8,40	3,50	6,80	-	1,60	2,30	staight	-	Semi-sphere	
41.316.094.01-2	1,6	20 N·cm	9,40	2,90	7,65	8,00	1,40	2,30	conical	45°	45° Chamfer	
41.317.065.01-2	N1-72	25 N·cm	6,50	2,40	4,70	5,18	1,33	2,30	conical	45°	45° Chamfer	
41.317.071.01-2	N1-72	25 N·cm	7,10	2,60	5,56	5,65	1,45	2,30	conical	70°	45° Chamfer	
41.317.073.01-2	N1-72	25 N·cm	7,30	2,50	5,50	5,77	1,53	2,30	conical	60	45° Chamfer	
41.318.044.01-2	1,8	25 N·cm	4,40	2,75	3,00	-	1,40	2,30	staight	-	Semi-sphere	
41.318.045.01-2	1,8	25 N·cm	4,50	2,30	2,81	2,90	1,60	2,30	conical	70°	45° Chamfer	
41.318.048.01-2	1,8	25 N·cm	4,80	2,80	3,22	3,65	1,15	2,30	conical	30°	Semi-sphere	
41.318.051.01-2	1,8	25 N·cm	5,10	2,70	3,55	3,70	1,40	2,30	conical	60°	45° Chamfer	
41.318.052.01-2	1,8	25 N·cm	5,20	2,90	3,65	3,80	1,40	2,30	conical	60°	45° Chamfer	



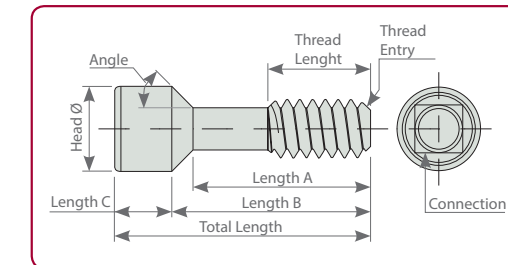
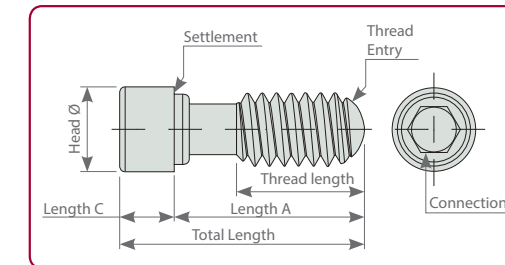
REFERENCE	METRIC	TORQUE	TOTAL LENGHT	THREAD LENGHT	A LENGHT	B LENGHT	C LENGHT	HEAD DIAMETER	SEAT	ANGLE	THREAD ENTRY	CONNECTION
41.318.064.01-2	1,8	25 N·cm	6,40	3,45	4,73	5,10	1,30	2,30	conical	35°	45° Chamfer	Hexalobular 1,70
41.318.065.01-2	1,8	25 N·cm	6,50	2,80	5,00	-	1,50	2,30	straight	-	Semi-sphere	
41.318.066.01-2	1,8	25 N·cm	6,60	4,18	5,05	5,20	1,40	2,30	conical	60°	45° Chamfer	
41.318.067.01-2	1,8	25 N·cm	6,70	2,35	5,00	5,40	1,30	2,30	conical	45°	45° Chamfer	
41.318.068.01-2	1,8	25 N·cm	6,80	4,00	5,25	5,40	1,40	2,30	conical	60°	45° Chamfer	
41.318.071.01-2	1,8	25 N·cm	7,10	2,60	5,56	5,65	1,45	2,30	conical	70°	45° Chamfer	
41.318.074.01-2	1,8	25 N·cm	7,40	3,80	5,80	6,03	1,60	2,30	conical	50°	45° Chamfer	
41.318.075.01-2	1,8	25 N·cm	7,50	3,30	6,10	-	1,40	2,30	straight	-	Semi-sphere	
41.318.076.01-2	1,8	25 N·cm	7,60	2,52	5,80	6,20	1,40	2,30	conical	45°	45° Chamfer	
41.318.080.01-2	1,8	25 N·cm	8,00	4,00	6,50	-	1,50	2,30	straight	-	45° Chamfer	
41.320.047.01-2	2,0	25 N·cm	4,70	3,00	3,30	-	1,40	2,30	straight	-	Semi-sphere	
41.320.048.01-2	2,0	25 N·cm	4,80	2,70	3,30	3,40	1,40	2,30	conical	60°	45° Chamfer	
41.320.049.01-2	2,0	25 N·cm	4,90	2,90	3,40	3,50	1,40	2,30	conical	60°	45° Chamfer	
41.320.050.01-2	2,0	25 N·cm	5,00	2,80	3,39	3,60	1,40	2,30	conical	30°	Semi-sphere	
41.320.051.01-2	2,0	25 N·cm	5,10	3,10	3,60	-	1,50	2,30	straight	-	Semi-sphere	
41.320.060.01-2	2,0	25 N·cm	6,00	2,70	4,50	-	1,50	2,30	straight	-	Semi-sphere	
41.320.065.01-2	2,0	25 N·cm	6,50	2,70	5,00	-	1,50	2,30	straight	-	45° Chamfer	
41.320.066.01-2	2,0	25 N·cm	6,60	4,18	5,11	5,20	1,40	2,30	conical	60°	45° Chamfer	
41.320.067.01-2	2,0	25 N·cm	6,70	2,30	3,65	5,68	1,02	2,58	conical	15°	45° Chamfer	
41.320.068.01-2	2,0	25 N·cm	6,80	4,40	5,30	5,40	1,40	2,30	conical	60°	45° Chamfer	
41.320.070.01-2	2,0	25 N·cm	7,00	3,00	5,60	-	1,40	2,30	straight	-	Semi-sphere	
41.320.074.01-2	2,0	25 N·cm	7,40	3,30	6,00	-	1,40	2,30	straight	-	Semi-sphere	
41.320.075.01-2	2,0	25 N·cm	7,50	2,75	5,93	6,18	1,32	2,30	conical	35°	45° Chamfer	
41.320.079.01-2	2,0	25 N·cm	7,90	3,30	6,33	6,50	1,40	2,30	conical	45°	45° Chamfer	
41.320.082.01-2	2,0	25 N·cm	8,20	4,70	6,70	-	1,50	2,40	straight	-	Semi-sphere	
41.320.090.01-2	2,0	25 N·cm	9,00	4,00	7,50	-	1,50	2,30	straight	-	Semi-sphere	
41.320.094.01-2	2,0	25 N·cm	9,4	3,00	7,85	8,00	1,40	2,30	conical	45°	45° Chamfer	
41.325.054.01-2	2,5	25 N·cm	5,40	3,80	4,10	-	1,30	2,85	straight	-	Semi-sphere	
41.325.067.01-2	2,5	25 N·cm	6,70	4,60	5,10	-	1,60	2,85	straight	-	Semi-sphere	

STRAIGHT SCREWS TECHNICAL SPECIFICATIONS



REFERENCE	METRIC	TORQUE	TOTAL LENGTH	THREAD LENGTH	A LENGTH	B LENGTH	C LENGTH	HEAD DIAMETER	SEAT	ANGLE	THREAD ENTRY	CONNECTION
40.314.008.01-2	1,4	15 N-cm	3,5	1,8	2,1	-	1,4	2	straight	-	45° Chamfer	Unigrip
40.314.003.01-2	1,4	15 N-cm	3,9	1,91	2,1	-	1,8	2,4	straight	-	45° Chamfer	Hex. 1,20
40.314.003.02-2	1,4	15 N-cm	4	2	2,2	-	1,8	2,3	straight	-	45° Chamfer	Hex. 1,20
40.314.005.01-2	1,4	15 N-cm	7,6	3,55	5,17	6	1,6	2,15	conical	25°	45° Chamfer	Hex. 1,27
40.316.002.01-2	1,6	20 N-cm	7	2,79	4,86	5,44	1,56	2,3	conical	45°	45° Chamfer	Sq. 1,30
40.316.008.01-2	1,6	20 N-cm	7	2,7	5,15	-	1,8	2,3	straight	-	45° Chamfer	Unigrip
40.316.008.02-2	1,6	20 N-cm	7,3	2,7	5,15	5,9	1,4	2,2	conical	35°	45° Chamfer	Unigrip
40.316.005.01-2	1,6	20 N-cm	7,5	3,6	5,33	5,85	1,65	2,15	conical	30°	45° Chamfer	Hex. 1,27
40.316.007.01-2	1,6	20 N-cm	7,9	2	5,72	6,9	2,18	2,18	conical	15°	45° Chamfer	Torx T6
40.316.005.02-2	1,6	20 N-cm	8,2	3,03	6,25	-	2	2,33	straight	-	45° Chamfer	Hex. 1,27
40.316.005.03-2	1,6	20 N-cm	8,25	3,03	6,25	-	2	2,45	straight	-	45° Chamfer	Hex. 1,27
40.316.003.01-2	1,6	20 N-cm	8,4	2,5	6,6	-	1,8	2	straight	-	45° Chamfer	Hex. 1,20
40.316.002.02-2	1,6	20 N-cm	9,3	3,3	7,3	-	2	2,3	straight	-	Semi-sphere	Sq. 1,30
40.316.005.04-2	1,6	20 N-cm	10,5	2,9	8,15	8,4	2,1	2,1	conical	45°	45° Chamfer	Hex. 1,27
40.318.005.01-2	1,8	25 N-cm	4,5	2,3	2,8	2,9	1,6	2,35	conical	70°	45° Chamfer	Hex. 1,27
40.318.006.01-2	1,8	25 N-cm	6	3,18	3,5	3,85	2,15	2,4	conical	45°	45° Chamfer	Hex. 1,70
40.318.003.01-2	1,8	25 N-cm	6,8	3,3	5,2	-	1,6	2,3	straight	-	45° Chamfer	Hex. 1,20
40.318.002.01-2	1,8	25 N-cm	7	3,2	5,2	-	1,8	2,5	straight	-	45° Chamfer	Sq. 1,30
40.318.004.01-2	1,8	25 N-cm	7,2	4,47	2,3	6,2	1	2,4	conical	30°	45° Chamfer	Hex. 1,25
40.318.005.02-2	1,8	25 N-cm	7,6	3,8	5,8	6,05	1,55	2,35	conical	50°	45° Chamfer	Hex. 1,27
40.318.008.01-2	1,8	25 N-cm	8,3	2,5	6,5	-	1,8	2,45	straight	-	45° Chamfer	Unigrip
40.318.004.02-2	1,8	25 N-cm	9,8	5,094	8,3	8,8	1	2,4	conical	30°	45° Chamfer	Hex. 1,25
40.317.004.01-2	N1-72	25 N-cm	7,6	2,8	5,6	5,76	1,84	2,3	conical	70°	45° Chamfer	Hex. 1,25

REFERENCE	METRIC	TORQUE	TOTAL LENGTH	THREAD LENGTH	A LENGTH	B LENGTH	C LENGTH	HEAD DIAMETER	SEAT	ANGLE	THREAD ENTRY	CONNECTION
40.317.002.01-2	N1-72	25 N-cm	8,17	3	5,31	5,87	2,3	2,4	conical	45°	45° Chamfer	Sq. 1,30
40.320.003.01-2	2	30 N-cm	4,7	2,7	3,33	-	1,37	2,35	straight	-	45° Chamfer	Hex. 1,20
40.320.002.01-2	2	30 N-cm	5	3,06	3,26	3,5	1,5	2,49	conical	45°	45° Chamfer	Sq. 1,30
40.320.007.01-2	2	30 N-cm	6,7	2,25	3,59	5,7	1	2,58	conical	15°	45° Chamfer	Torx T6
40.320.003.02-2	2	30 N-cm	7	3,25	5	-	2	2,4	straight	-	45° Chamfer	Hex. 1,20
40.320.008.01-2	2	30 N-cm	7	3,25	5	-	2	2,4	straight	-	45° Chamfer	Unigrip
40.320.008.02-2	2	30 N-cm	7,3	3	5,8	6,2	1,1	2,5	conical	35°	45° Chamfer	Unigrip
40.320.007.02-2	2	30 N-cm	7,4	3,3	6	-	1,4	2,3	straight	-	Semi-sphere	Torx T6
40.320.003.03-2	2	30 N-cm	7,9	3,7	5,55	6,05	1,8	2,4	conical	45°	45° Chamfer	Hex. 1,20
40.320.002.02-2	2	30 N-cm	7,45	3	5,7	5,9	1,5	2,4	conical	45°	45° Chamfer	Sq. 1,30
40.320.007.03-2	2	30 N-cm	7,6	3	6,1	6,3	1,3	2,4	conical	45°	Semi-sphere	Torx T6
40.320.005.01-2	2	30 N-cm	7,6	3,7	6	-	1,6	2,4	straight	-	45° Chamfer	Hex. 1,27
40.320.008.03-2	2	30 N-cm	10	3,6	8,5	-	1,5	2,45	straight	-	45° Chamfer	Unigrip
40.320.002.03-2	2	30 N-cm	10,2	3,15	8,4	-	1,8	2,45	straight	-	45° Chamfer	Sq. 1,30
40.320.005.02-2	2	30 N-cm	10,3	4	8,3	-	2	2,45	straight	-	45° Chamfer	Hex. 1,27
40.320.005.03-2	2	30 N-cm	10,3	3,5	8,3	-	2	2,33	straight	-	45° Chamfer	Hex. 1,27
40.320.005.04-2	2	30 N-cm	10,5	3,06	8,15	8,4	2,1	2,5	conical	45°	45° Chamfer	Hex. 1,27
40.325.002.01-2	2,5	30 N-cm	7,41	3,5	4,75	5,29	2,12	2,87	conical	45°	Semi-sphere	Sq. 1,30



TALLADIUM GUARANTEE

TERMS AND CONDITIONS

These guarantee terms and conditions ("T&C") cover the entire range of Talladium products ("Products"), manufactured by TALLADIUM ESPAÑA S.L. and distributed by Geoda Medical S.L. or official dealers. The guarantee described in these T&C is exclusively in benefit of the clinician ("Clinician") and of the dental technician ("Technician") and not for the benefit of third parties or institutions, including patients.

GUARANTEE PERIOD

TALLADIUM ESPAÑA S.L. offers a lifelong guarantee for its entire range of products starting from the date of issue of the invoice.

GUARANTEE SCOPE

Subject to the limitations and exceptions described in these T&C, TALLADIUM ESPAÑA S.L. will offer the following benefits:

QUALITY: If there are defects in the materials or in the manufacturing of the Product, TALLADIUM ESPAÑA S.L. will replace the Product with no additional cost.

SAFETY: If, having complied with all the product indications, the prosthesis should have to be made again, due to a fault in the Dynamic Abutment® or Dynamic Titanium Base® system, TALLADIUM ESPAÑA S.L. will replace the abutments and screws necessary to remake the prosthesis, as well as the costs derived from its manufacturing.

In case of having used our products and having complied with all the product indications, the implants suffer any damage, TALLADIUM ESPAÑA S.L. will pay the cost of the implants. This coverage will only be valid during the first 6 months after the collocation of the prosthesis which includes our products.

CLAIM REQUIREMENTS AND PROCEDURE

To receive the benefits indicated in these T&C, the treating Clinician must satisfy the following requirements:

- The claim must be notified to TALLADIUM ESPAÑA S.L. within (30) days since the date the claimed defect was detected.
- This requires that the Clinician or Technician must contact the customer service department by telephone or by e-mail to make the claim.
- A claim form will be completed, which, together with a document or report which justifies the faulty Product and the faulty Product itself, will be sent by the customer to TALLADIUM ESPAÑA S.L. offices, within the previously indicated period.
- Clinicians or Technicians presenting a claim in agreement with these T&C must be up to date in any payments owing to TALLADIUM ESPAÑA S.L. or to any of its subsidiaries, at the time when the claim form is presented.
- All the use procedures of our Products must be carried out in agreement with the instructions of TALLADIUM ESPAÑA S.L. as well as in accordance with commonly accepted dentistry practices.
- The expenses derived from this procedure will be assumed by the customer. The return shipping costs will be assumed by TALLADIUM ESPAÑA S.L. in all those cases covered by these T&C.

Regardless of the guarantee rights, claims should be notified as soon as possible in order to comply with regulatory requirements.

GENERAL LIMITATIONS OF THIS GUARANTEE

With the exception of the guarantee described in these T&C, neither TALLADIUM ESPAÑA S.L. nor its representatives, nor third parties manufacturing or distributing the Products, represent or offer a guarantee, agreement or any other express or implicit, oral or written, commitment, with respect to the Products (without limitation), including guarantees involved in the marketing, durability or suitability for individual uses or purposes.

In addition and within the maximum extent permitted by the relative law, TALLADIUM ESPAÑA S.L. rejects (on its own behalf, and on behalf of its representatives and third parties that manufacture or distribute Products) any responsibility with respect to any direct or indirect damage caused, which may result from or be a consequence of the design, composition of the dental prosthesis into which the Products are integrated.

GUARANTEE EXCLUSIONS

TALLADIUM ESPAÑA S.L. limits this guarantee to:

- Transformed abutments that form part of the dental prosthesis. But not the screws used to anchor them.
- Problems derived from the use of laboratory screws for the definite fixation of the prosthesis. TALLADIUM ESPAÑA S.L. has clinical screws that satisfy that function.
- Clinical screws that have been in the mouth for more than 2 years, as it is understood that the patient has to have annual check-ups with the subsequent change of screws.
- The fault is due to normal wear and tear.

AMENDMENT OR SUSPENSION OF THE GUARANTEE

TALLADIUM ESPAÑA S.L. reserves the right to amend or withdraw these T&C at any time and without prior notification. Any modification or suspension shall not affect products already placed in patients.



DYNAMIC ABUTMENT® SOLUTIONS

AV. BLONDEL, 54 3º · 25002 · LLEIDA (SPAIN)

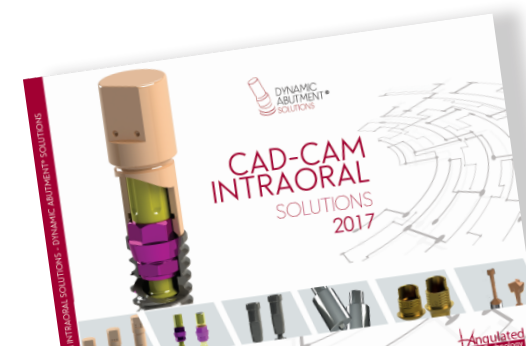
TEL. +34 973 289 580

das@dynamicabutment.com

www.dynamicabutment.com

Visit our Online Store to find all our products and compatibilities :

www.dynamicabutmentstore.com



See our CadCam catalogue *INTRAORAL SOLUTIONS*
Download in our website: www.dynamicabutment.com



AV. BLONDEL, 54 3º · 25002· LLEIDA (SPAIN)
TEL. +34 973 289 580
das@dynamicabutment.com
www.dynamicabutment.com

DYNAMIC ABUTMENT® SOLUTIONS