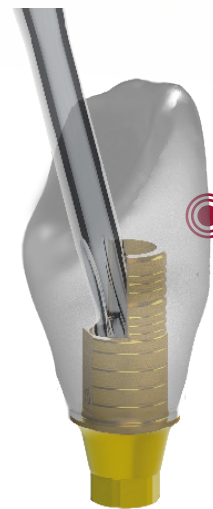


Dynamic 3TiBase®



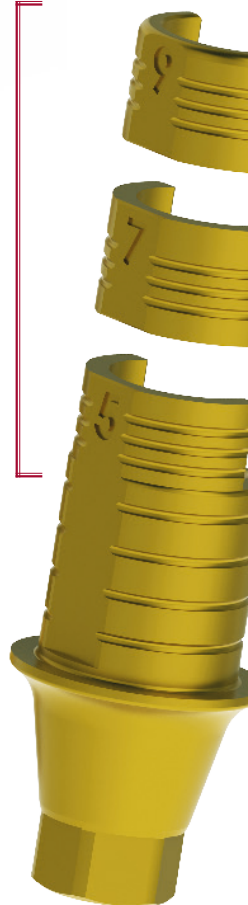
Different cement heights:
5, 7 or 9 mm



The structure is stronger and more resistant

2 cutting options

You can cut the TiBase® in two different heights to adapt it to all your cases: 5mm, 7mm or 9mm.



Scan with the Dynamic μScanbody and cement the final piece onto the 3TiBase.



If you do not have the Dynamic μScanbody, it is necessary to use the 4mm TiBase and the extraoral scanbody to make the scanning. The final piece is cemented onto the 3TiBase.

*Check all compatibilities available emailing: das@dynamicabutment.com



AV. BLONDEL, 54 3º
25002 LLEIDA (SPAIN)
TEL. +34 873 450 709
das@dynamicabutment.com
www.dynamicabutment.com



DYNAMIC TIBASE®

up to
45°



VERSION 2019-01



Dynamic TiBase®

- ✳ Screw access from 0° to 45°
- ✳ Cad-Cam structures made of Zirconium, metal and PMMA
- ✳ Perfect adjustment of the prosthetic part with the implant
- ✳ More strength of the structure
- ✳ Dynamic screw-screwdriver system
- ✳ Grade V dynamic titanium bases are gold anodized to improve the work's aesthetic

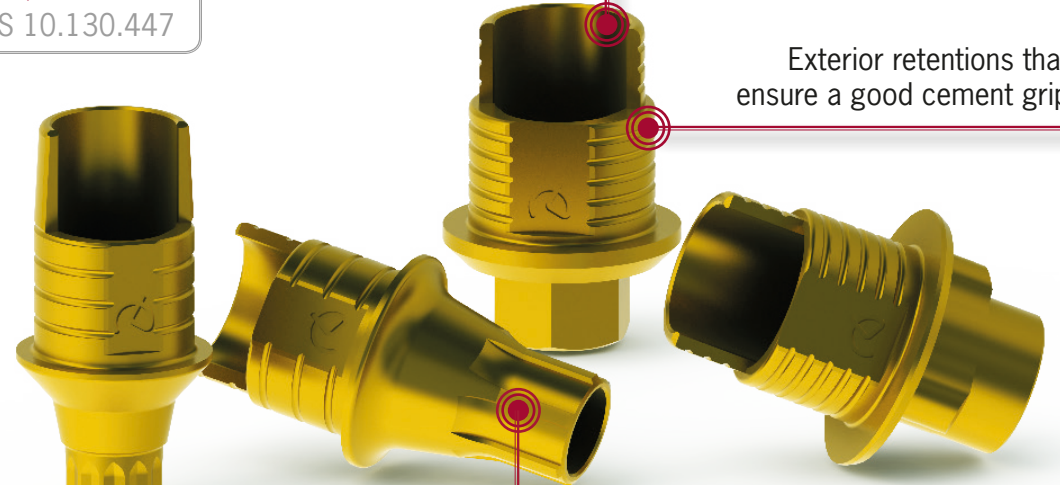


TO CORRECT
ANGULATION

up to
45°

Double height with a side cut that allows the entrance of the angled screw and screwdriver

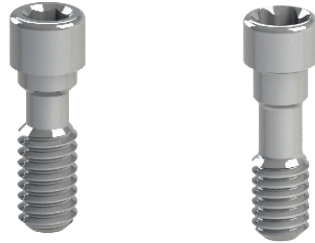
PATENT NUMBER
Dynamic TiBase®
US 10.130.447



Exterior retentions that ensure a good cement grip

Precision machined up to +/- 5 microns

PATENT NUMBER
Dynamic Screw
EP 2 932 937

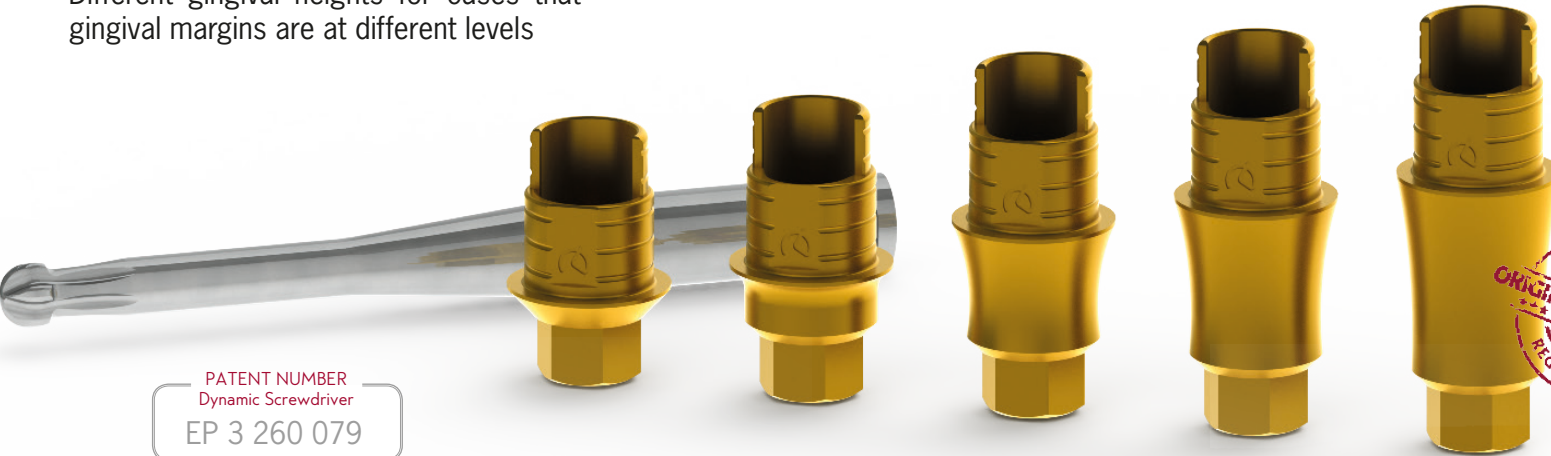


Straight screw Dynamic screw

Gingival options with Dynamic TiBase®

Different gingival heights for cases that gingival margins are at different levels

PATENT NUMBER
Dynamic Screwdriver
EP 3 260 079



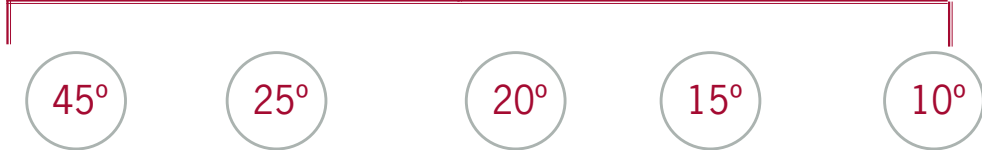
Get **30 degrees** and more
aesthetic angled channel

- ✳ Keep the maximum angulation
- ✳ Best aesthetic angled channel Ø 2mm
- ✳ Angled channel reduction of 32%
- ✳ Increase the volume of the structure
- ✳ Captive Screw
(Put the screw on the TiBase® before cementing)

* Example with TiBase® compatible with Zimmer Screw-Vent Ø3,5 (Code 0040)



Dynamic Screw

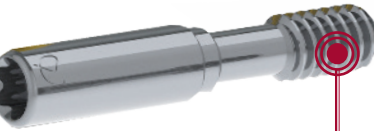


GH= 0.6mm Dynamic Screw GH= 1,5mm Dynamic Screw GH= 3mm Dynamic Screw GH= 4mm Dynamic Screw GH= 5mm Dynamic Screw

STANDARD SYSTEM*



Dynamic Screw



High Dynamic Screw



GH= 0,6mm Dynamic Screw GH= 1,5mm Dynamic Screw GH= 3mm High Dynamic Screw GH= 4mm High Dynamic Screw GH= 5mm High Dynamic Screw

CAPTIVE SYSTEM*