

# INTERNAL DAS MU







Virginia Woolf, 17  
25005, Lleida (Spain)

INTERNATIONAL +34 873 450 709  
das@dynamicabutment.com

USA +34 873 450 707  
usa@dynamicabutment.com

SPAIN +34 973 289 580  
spain@dynamicabutment.com

Dynamic Abutment Solutions is the trademark of the manufacturer Talladium España S.L. The information included in this catalogue is exclusively addressed to professionals in dental sector.

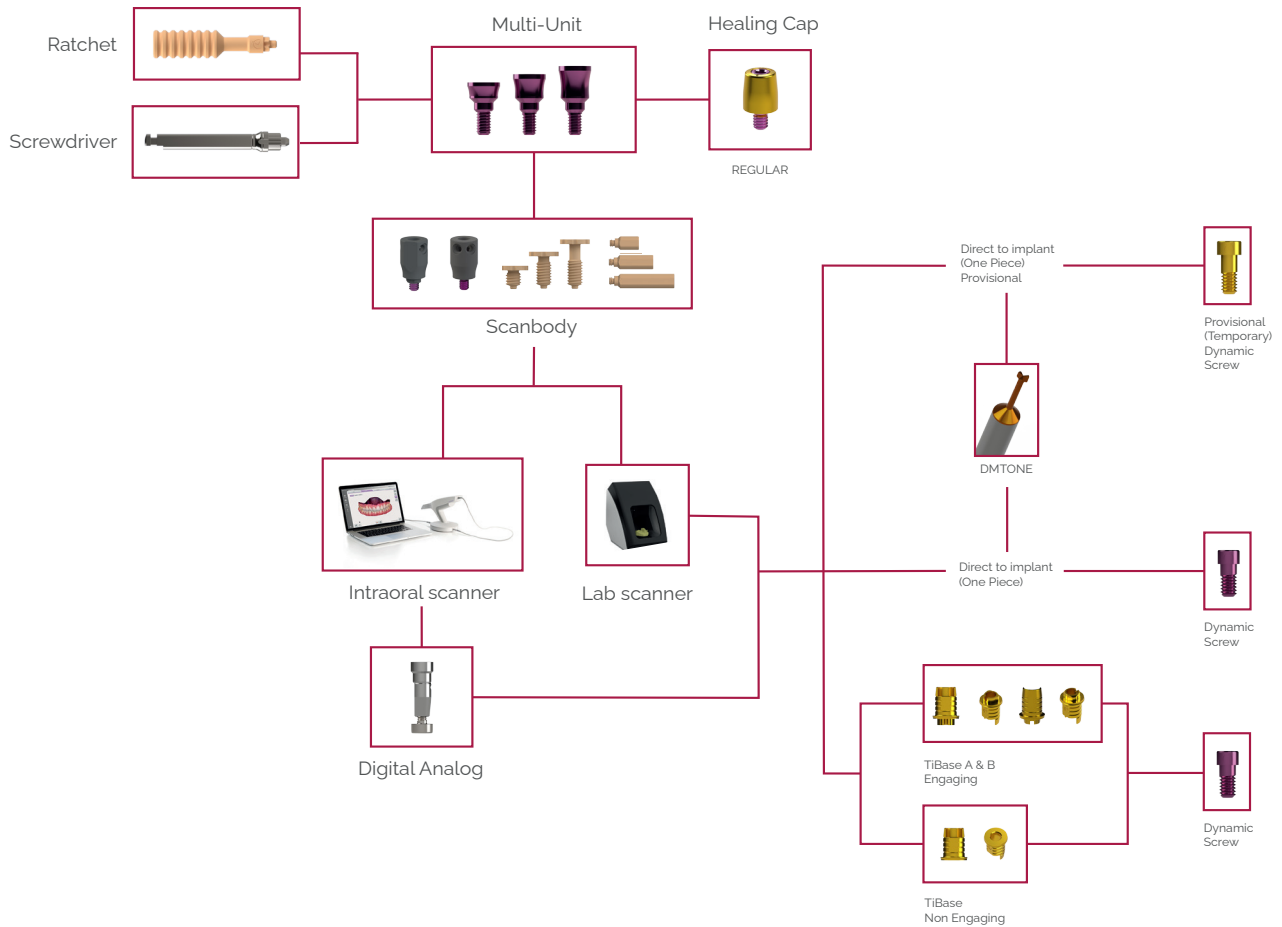
All commercial trademarks mentioned herein are fully registered by their respective companies, and the images that appear are just to provide an orientation. Talladium reserves the right to modify this document without previous notice. Talladium is not responsible for the inadequate execution of these products if the warning indications corresponding to every reference are not contemplated.

Ask about the products available with CE legislation. Some of the products are not authorized for sale and distribution or do not have a sales license in some countries according to other legislations. Information: das@dynamicabutment.com.

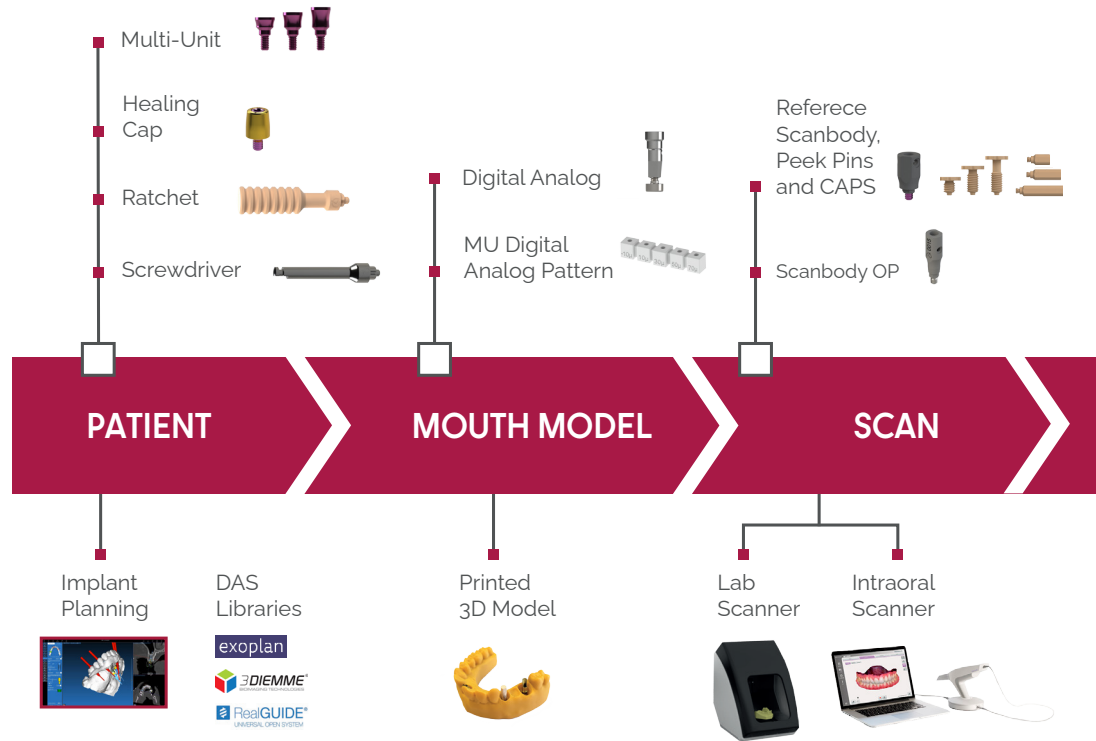


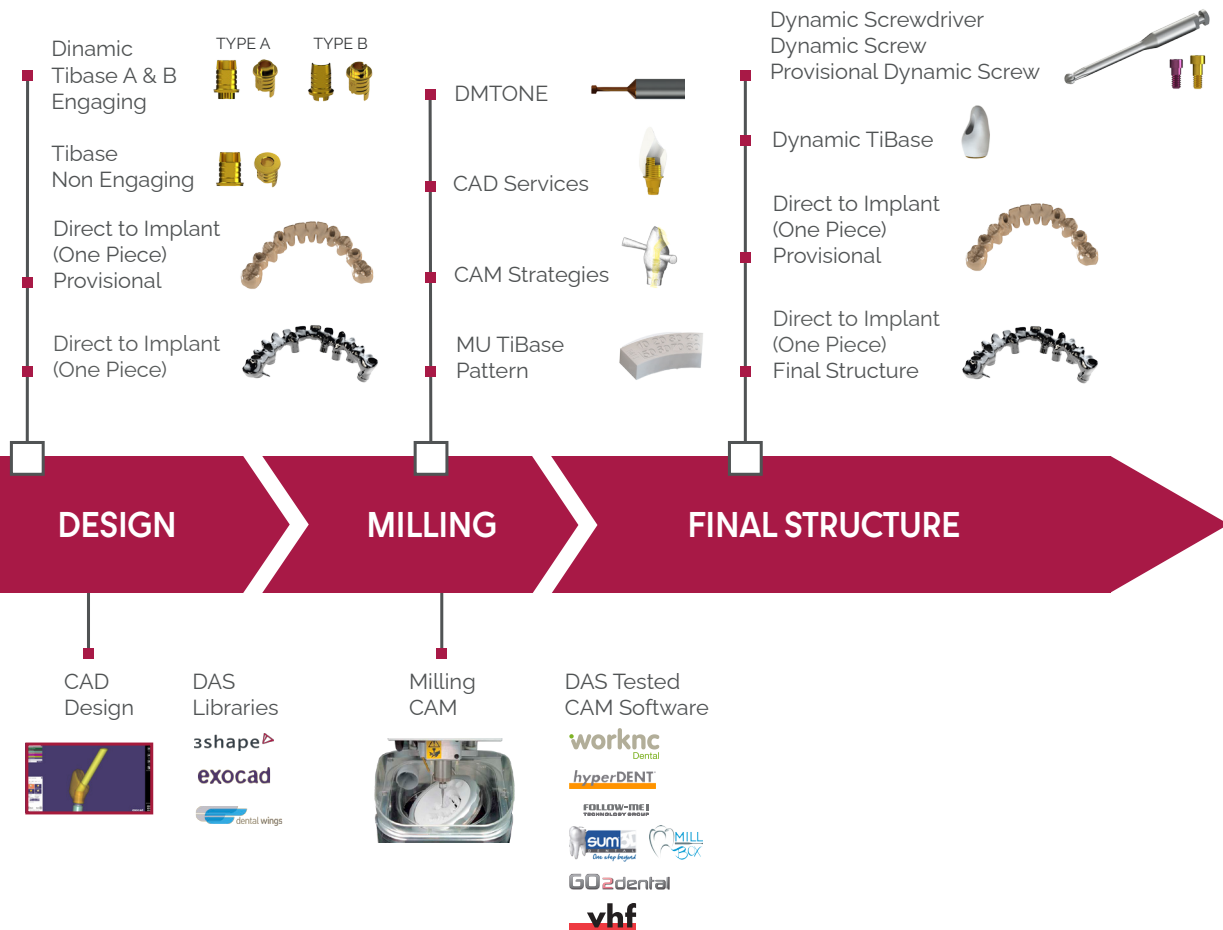
# INTERNAL MULTI-UNIT DAS SYSTEM





# MULTI-UNIT WORKFLOW



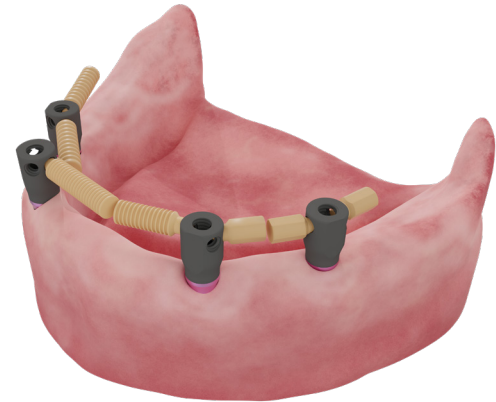
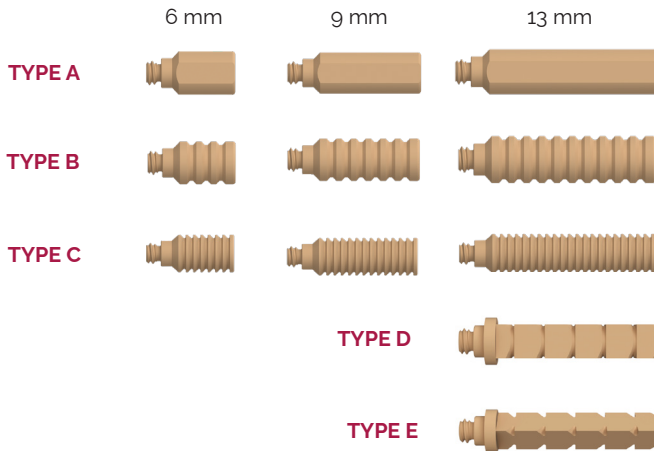


# REFERENCE SCANBODY & PEEK PINS

The Reference Scanbody is made of titanium and is designed to improve scanning for **edentulous cases**.

- Peek Pins can be used for **best scanning**
- The Reference Scanbody is compatible with different **Multi-Unit**

## Peek Pins lenghts



## Reference Scanbody





# CAPS COMPLETE ARCH PILLAR SYSTEM

The Complete Arch Pillar System (CAPS) is made to improve **scan accuracy** and to **record maxilomandibular relationship** for the fabrication of a complete arch.

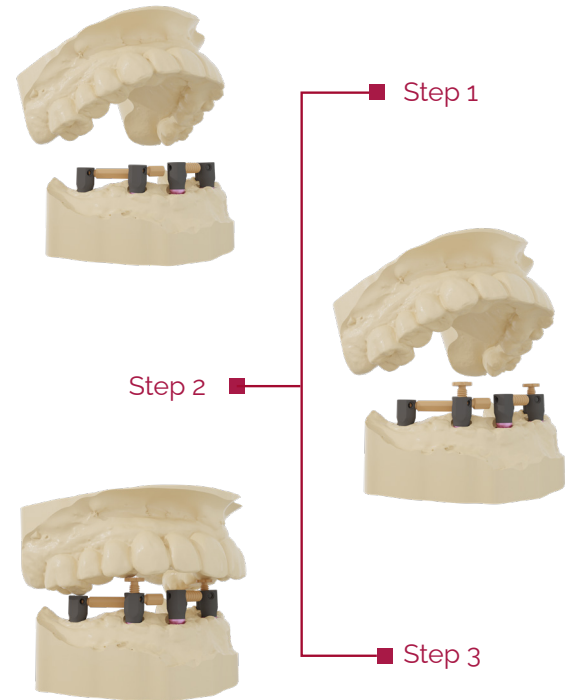
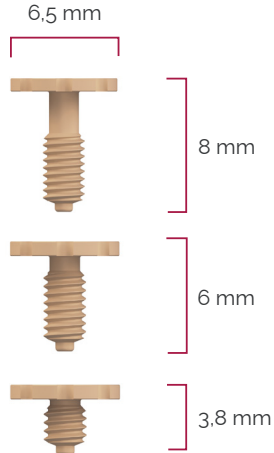
With the CAPS System we can finally close the Circle of **Digital Workflow** for a Complete Arch.

## CAPS heights

### REGULAR CAPS



### WIDE CAPS



# INTERNAL MULTI-UNIT

The Multi-Unit (MU) abutment has been carefully designed to rehabilitate partially or fully edentulous arches, as well as individual.

**Available in different gingival heights**

Maximum diameter of the MU is 4 mm.

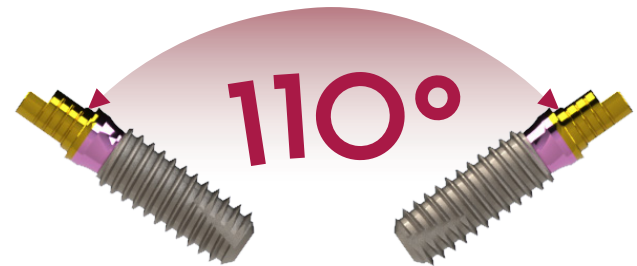
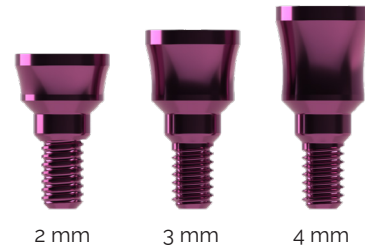
By being narrower it avoids contact with the bone



Similar color to the gingiva for perfect adaptation/integration

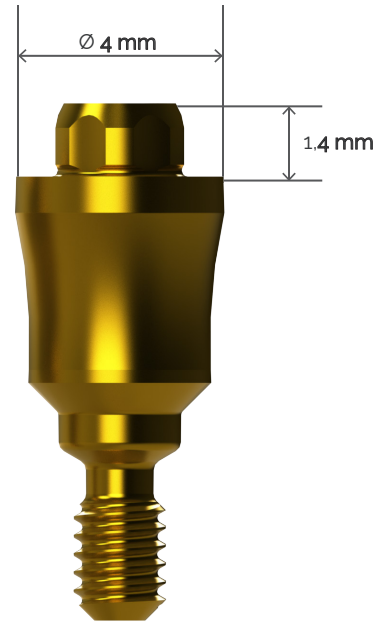
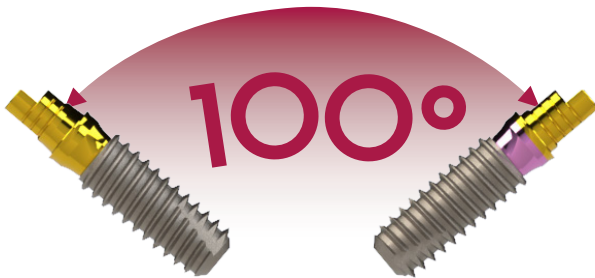
Concave design facilitates healing and soft tissue adaptation

**Divergence between implants: 110°**



# DAS MU & INTERNAL DAS MU

Using DAS MU in combination with  
INTERNAL DAS MU



DAS MU

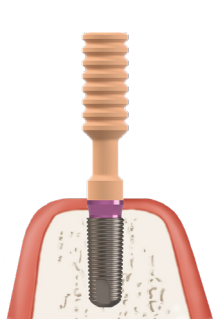
1 mm 2 mm 3 mm 4 mm



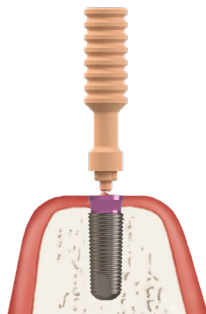
INTERNAL DAS MU

2 mm 3 mm 4 mm

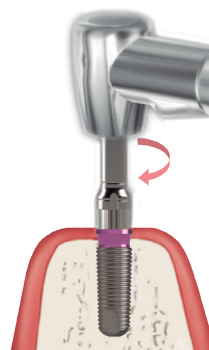
# MU INSERTION PROCEDURE



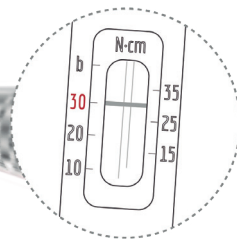
**STEP 1:**  
Use the plastic gripping tool to attach the MU to the implant



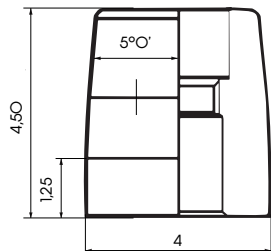
**STEP 2:**  
Remove the plastic tool



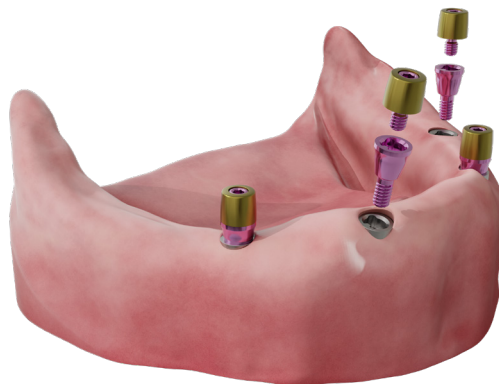
**STEP 3:**  
Tighten MU to **30 N.cm** using the MU Screwdriver



# MU HEALING CAPS



HEALING CAP REGULAR



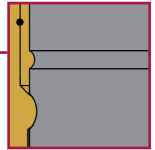
# DIGITAL ANALOG

Digital analog of the dental implant to simulate implant position in a 3D printed dental model.



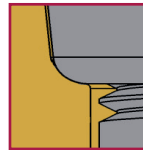
## Concave notch

Top precision in longitudinal position



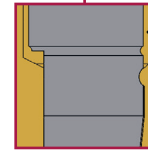
## Screwed fastening

Prevents the analog from moving in Z



## Curved surface

Accuracy of orientation guaranteed



## Longitudinal cut

Longitudinal cut to avoid rotation X-Y

# DYNAMIC TIBASE

## TO CORRECT ANGULATION



### Connection slot

The window is oriented  
at 0° with respect to  
the slot

### Connection slot

The window is oriented  
at 180° with respect to  
the slot

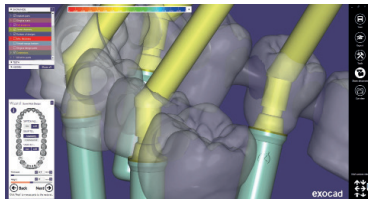
TIBASE  
TYPE A  
NR-ENGAGING

TIBASE  
TYPE B  
NR-ENGAGING

TIBASE  
R-NON ENGAGING

Angulated Screw  
Channel

## CAD DESIGN



3shape

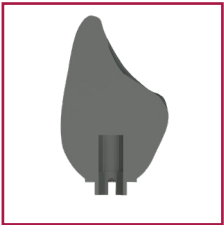
exocad

dental wings

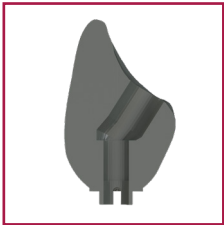
Internal DAS Multi-Unit system allows to change the MU in the library **without rescanning or redesigning** the case. That eases the lab and clinic work, as technician can change the MU without the need to make a new appointment with the patient to re-scan.

If we make a NR case, the option of changing MU is not allowed in the design.

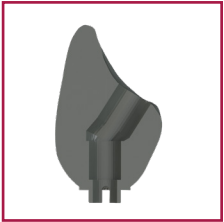
# DIRECT TO IMPLANT ONE PIECE



**Step 1**  
Crown with  
pre drill

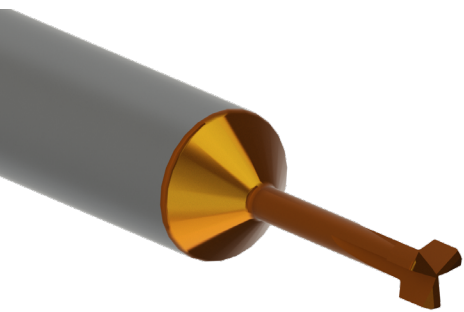


**Step 2**  
Crown with  
angled channel



**Step 3**  
**DMTone**  
Crown with Dynamic Milling  
Tool. Milling the screw seat and  
increasing the diameter of the  
straight channel

## DMTONE DYNAMIC MILLING TOOL



Dynamic  
screw



Provisional (temporary)  
Dynamic screw



### Final restorations 0-35°

Direct to implant libraries available R/NR  
R = Non engaging | NR = Engaging

Greater seating  
thickness

Greater contact  
surface between  
the screw and  
the material for  
greater safety in  
soft materials



### Provisional (temporary) restorations up to 35°

Provisional (temporary) direct to implant libraries available R/NR  
R = Non engaging | NR = Engaging

# INTERNAL DAS MU SYSTEM COMPONENTS



**Ratchet**  
49.409.000.02-2



**Screwdriver**  
43.321.320.01-2



**Digital Analog**  
34.312.210.01-2



**Digital Analog  
Positioner**  
49.309.000.01-2



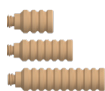
**Dynamic  
Screwdriver**  
43.618.201.01-2 (18 mm)  
43.624.201.01-2 (24 mm)  
43.632.201.01-2 (32 mm)



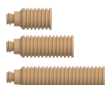
**MU DMTone**  
33.390.716.01-2 Shank Ø3  
33.490.716.01-2 Shank Ø4  
33.690.716.01-2 Shank Ø6



**Peek Pins**  
**TYPE A**  
49.414.000.01-2 (6 mm)  
49.415.000.01-2 (9 mm)  
49.416.000.01-2 (13 mm)



**TYPE B**  
49.414.000.02-2 (6 mm)  
49.415.000.02-2 (9 mm)  
49.416.000.02-2 (13 mm)



**TYPE C**  
49.414.000.03-2 (6 mm)  
49.415.000.03-2 (9 mm)  
49.416.000.03-2 (13 mm)



**TYPE D**  
49.416.000.04-2 (13 mm)



**TYPE E**  
49.416.000.05-2 (13 mm)



**CAPS**  
**Regular**  
49.418.000.01-2 (3,8 mm)  
49.419.000.01-2 (6 mm)  
49.420.000.01-2 (8 mm)  
**Wide**  
49.418.000.02-2 (3,8 mm)  
49.419.000.02-2 (6 mm)  
49.420.000.02-2 (8 mm)



**Reference Scanbody**  
**Engaging**  
54.312.210.31-2



**Non-engaging**  
54.322.210.31-2



**Healing Cap**  
**Regular**  
40.318.003.89-2.



**MU Dynamic  
TiBase**  
**Type A Engaging**  
31.312.210.01-2



**Type B Engaging**  
31.313.210.01-2



**Non-engaging**  
31.322.210.01-2



**Dynamic Screw**  
41.318.050.01-2



**Provisional  
(temporary)  
Dynamic Screw**  
41.318.057.01-2



# TALLADIUM GUARANTEE

## TERMS AND CONDITIONS

These guarantee terms and conditions ("T&C") cover the entire range of Talladium products ("Products"), manufactured by TALLADIUM ESPAÑA S.L. and distributed by Geoda Medical S.L. or official dealers. The guarantee described in these T&C is exclusively in benefit of the clinician ("Clinician") and of the dental technician ("Technician") and not for the benefit of third parties or institutions, including patients.

## GUARANTEE PERIOD

TALLADIUM ESPAÑA S.L. offers a lifelong guarantee for its entire range of products starting from the date of issue of the invoice.

## GUARANTEE SCOPE

Subject to the limitations and exceptions described in these T&C, TALLADIUM ESPAÑA S.L. will offer the following benefits:

**QUALITY:** If there are defects in the materials or in the manufacturing of the Product, TALLADIUM ESPAÑA S.L. will replace the Product with no additional cost.

**SAFETY:** If, having complied with all the product indications, the prosthesis should have to be made again, due to a fault in the Dynamic Abutment or Dynamic Titanium Base system, TALLADIUM ESPAÑA S.L. will replace the abutments and screws necessary to remake the prosthesis, as well as the costs derived from its manufacturing.

In case of having used our products and having complied with all the product indications, the implants suffer any damage, TALLADIUM ESPAÑA S.L. will pay the cost of the implants. This coverage will only be valid during the first 6 months after the collocation of the prosthesis which includes our products.

## CLAIM REQUIREMENTS AND PROCEDURE

To receive the benefits indicated in these T&C, the treating Clinician must satisfy the following requirements:

- The claim must be notified to TALLADIUM ESPAÑA S.L. within (30) days since the date the claimed defect was detected.
- This requires that the Clinician or Technician must contact the customer service department by telephone or by e-mail to make the claim.
- A claim form will be completed, which, together with a document or report which justifies the faulty Product and the faulty Product itself, will be sent by the customer to TALLADIUM ESPAÑA S.L. offices, within the previously indicated period.
- Clinicians or Technicians presenting a claim in agreement with these T&C must be up to date in any payments owing to TALLADIUM ESPAÑA S.L. or to any of its subsidiaries, at the time when the claim form is presented.
- All the use procedures of our Products must be carried out in agreement with the instructions of TALLADIUM ESPAÑA S.L. as well as in accordance with commonly accepted dentistry practices.
- The expenses derived from this procedure will be assumed by the customer. The return shipping costs will be assumed by TALLADIUM ESPAÑA S.L. in all those cases covered by these T&C.

Regardless of the guarantee rights, claims should be notified as soon as possible in order to comply with regulatory requirements.

## GENERAL LIMITATIONS OF THIS GUARANTEE

With the exception of the guarantee described in these T&C, neither TALLADIUM ESPAÑA S.L. nor its representatives, nor third parties manufacturing or distributing the Products, represent or offer a guarantee, agreement or any other express or implicit, oral or written, commitment, with respect to the Products (without limitation), including guarantees involved in the marketing, durability or suitability for individual uses or purposes. In addition and within the maximum extent permitted by the relative law, TALLADIUM ESPAÑA S.L. rejects (on its own behalf, and on behalf of its representatives and third parties that manufacture or distribute Products) any responsibility with respect to any direct or indirect damage caused, which may result from or be a consequence of the design, composition of the dental prosthesis into which the Products are integrated.

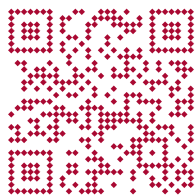
## GUARANTEE EXCLUSIONS

TALLADIUM ESPAÑA S.L. limits this guarantee to:

- Transformed abutments that form part of the dental prosthesis. But not the screws used to anchor them.
- Those products that are not used with the accessories and parts marketed by Talladium España

## AMENDMENT OR SUSPENSION OF THE GUARANTEE

TALLADIUM ESPAÑA S.L. reserves the right to amend or withdraw these T&C at any time and without prior notification. Any modification or suspension shall not affect products already placed in patients.

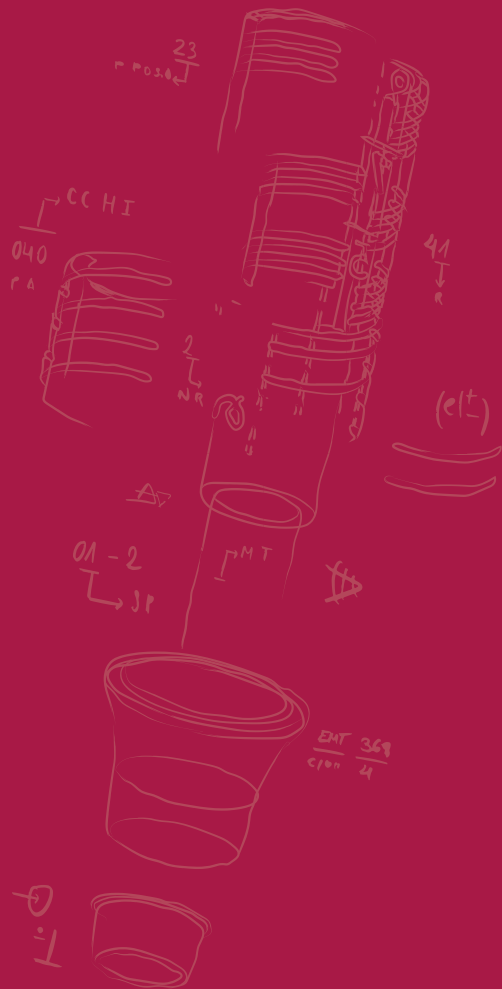


This printed version is probably  
outdated and may not include all  
products or compatibilities.

**Scan and download the  
latest version of this catalogue**

[www.dynamicabutment.com](http://www.dynamicabutment.com)





**DYNAMIC  
ABUTMENT  
SOLUTIONS**

Virginia Woolf, 17  
25005 · Lleida (Spain)

INTERNATIONAL +34 873 450 709  
das@dynamicabutment.com

SPAIN +34 973 289 580  
spain@dynamicabutment.com



[www.dynamicabutment.com](http://www.dynamicabutment.com)

